

Zen Configurator

Please complete this form for each Zen model required and email to us at info@tempest.biz

Name *			
Company *			
Email *			
Phone			
Project Name & Location *			
Projector & Lens Make/Model #	Projector: *	Lens: *	
Zen Model *	57.	Quantity	
Destination Country *			
Expected Install Date *			
Enclosure Type *	Landscape	Portrait	UST
Projector Slide *			
Supply Voltage *			
Unistrut Kit	Qty	Mounting	No
Ethernet Comms	Qty	Type	No
Spare Inlet Filter	Qty	No	

Zen Touring Options			
Casters Kit	Qty	No	
Truss Kit	Qty	No	
Soft Cover	Qty	No	
Power In Connector			

Signal Connectors:		
Connector Types <i>(up to six Neutrik D-style feedthroughs)</i>	<i>Position: (indicate type)</i>	<i>Text Label (12 characters Max)</i>
Type:	1	1
A: Ethercon	2	2
B: OpticalCon	3	3
C: HDMI	4	4
D: Displayport	5	5
E: BNC	6	6
F: Blank		
G: Other:		

Projector Power Outlet *(all types include IEC 60320 C13 Aux Power):*

Select Type:

Custom:

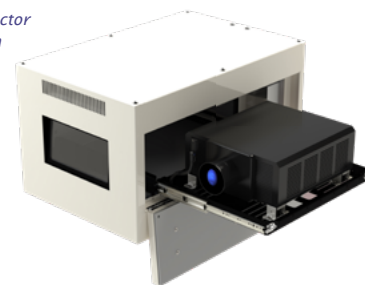
Color, standard	Black	White
Color, custom <i>Gloss levels higher than 30% may show up weld marks. Tempest accepts no responsibility in this event.</i>	Custom, RAL #	
	Gloss Level	%
	Salt Fog Primer:	Yes No



Custom Requests:

Factory Use Only:	SO #:	Date:
Electrical:	IEC	NEMA Wiring p:
Test:	Function	Projector
Hardware Kit:		

* Left projector slide shown here.



User manuals, CAD drawings at www.tempest.biz

 Made in the USA

©Tempest Lighting, Inc., August, 2023

In the interest of continuous product improvement, specifications are subject to change without notice

Tempest Lighting, Inc.
 11845 Wicks Street, Sun Valley, CA 91352, USA
www.tempest.biz info@tempest.biz
 t: +1 818 787 8984 f: +1 818 252 7101