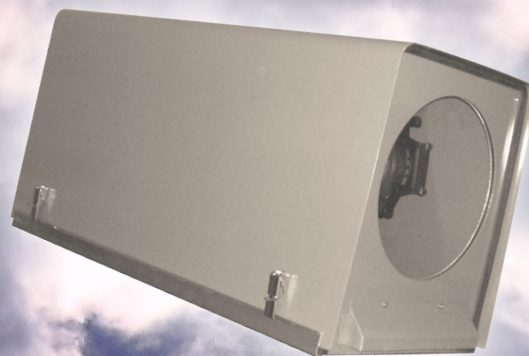




Thunder

Outdoor
Lighting
Enclosures



Thunder

Outdoor
Lighting
Enclosures

*Any light, any place,
any weather.
Now you can use
conventional stage
lights outside, in
any climate.*

Tempest's Thunder Lighting Enclosures are the right way to use conventional stage lights in outdoor locations. Thunder comes in a wide range of sizes, for all popular spotlights and effects projectors, and custom sizes are available to special order for luminaires up to 2.5kW.

Thunder now comes as standard with Tempest's MiniDEC™ controller, automatically maintaining a comfortable temperature inside the enclosure, 24/7/365.

Custom Enclosures

Over the years, we have made many custom Thunder variants for all manner of lights, lasers, even fog machines! Contact info@tempest.biz to discuss your custom Thunder enclosure needs.

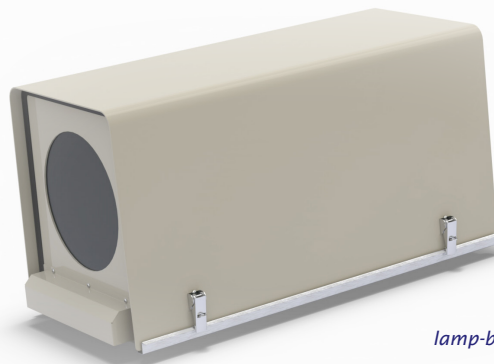
Rigging

Thunder enclosures may be mounted either base up or base down. Use standard Unistrut hardware to attach to your own structure, or pick one of Tempest's many rigging options for maximum flexibility.

XYZ kits, for pole, truss or floor mounting, offer 360° pan and +/- 45° tilt control.

The 4900.MC & 4925.MC **Clamp Kits** allow simple attachment to horizontal pipes or truss.

Thunder **Angle Mount Kits** provide up to 55° tilt up or down.



*Thunder 6700,
for 10" LED and
lamp-based ellipsoidals*

Thunder for Spotlights and Effects Projectors

Thunder enclosures come in a range of standard sizes to fit most popular stage lights and effects projectors. Luminaires mount to a stainless steel Unistrut rail inside the enclosure, allowing simple front-to-back position adjustment.

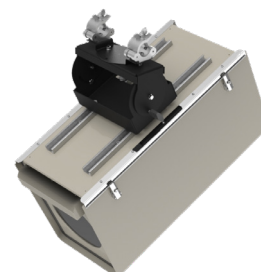
- Thunder 6600** Most standard ellipsoidal spotlights
- Thunder 6690** Rosco X24
- Thunder 6700** Most 10" ellipsoidals and smaller HMI profiles
- Thunder 6800** Most 5" ellipsoidals and 1200W effects projectors



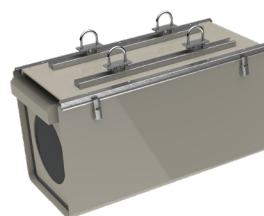
*Thunder 6600
with 6500.XYZ
Pole Mount*



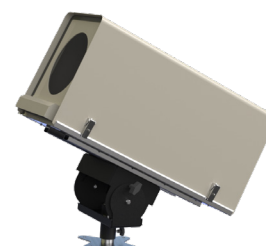
*Thunder 6600 with
6600.AM Angle Mount
Kit.*



*Thunder 6600 with
6500.XYZ.T Truss
Mount*



*Thunder 6600 with 4 x
4900.MC Pipe Clamp Kits.
Use 4 for truss, 2 to hang
on a single pipe*



*Thunder 6600 with
6500.XYZ.TB Turtle
Base Mount*

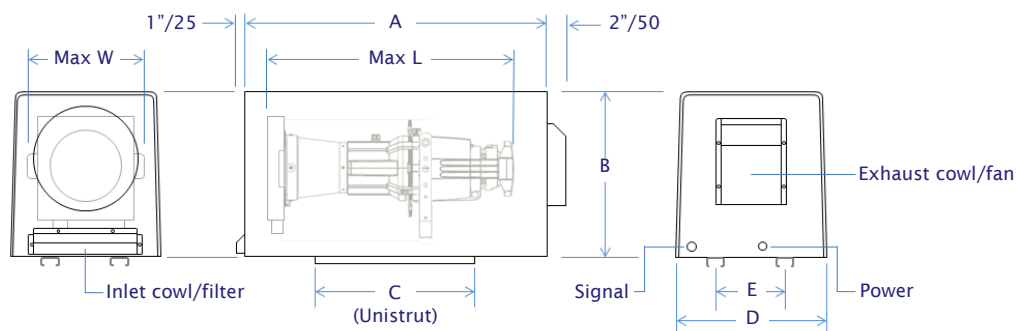
Thunder

Outdoor Lighting Enclosures

Specification

	Thunder	Thunder +
Construction: Aluminum chassis, stainless steel hardware and fittings	•	•
Port Glass: Tempered optical grade	•	•
Orientation: Base up or base down	•	•
Mounting: two stainless steel Unistrut rails	•	•
Luminaire Mount: Unistrut spring nut, 12mm bolt	•	•
Luminaire/Aux power outlet	1 x IEC C13	2 x IEC C13
Filter	Electrostatic Foam	Tempest Salt Fog HEPA
Automatic exhaust fan	•	•
Single or split feed wiring	•	•
Enclosure Control	Tempest MiniDEC	Tempest DEC
Condensation Control		•
Remote monitoring		•
Available Ethernet Monitor		•
Available Positive Pressure		•
Maintain minimum temperature (0-10°C)		•
Operating Temperature	0-40°C	-20 - 40°C
Available Thermal Insulation	•	•
Cooldown fan timeout	5 minutes	0 - 15 minutes
Security: Stainless steel latches with padlock rings	•	•
Designed to UL 508, UL 50	•	•
CE (.IN models)	•	•
RoHS	•	•
IK08	•	•
NEMA 3R (IP54)	•	•

Dimensions



Model	Enclosure ("/mm)			Luminaire ("/mm)				
	A	B	C	D	E	Max L	Max W	Max Watts
6690/91	24/610	14/356	15/381	16.5/419	8/203	15/381	14.5/368	700
6600	32.5/830	16.5/420	15/380	15/380	8/203	26/660	14/360	1,200
6700	38.5/980	19/480	15/380	16.5/420	12/305	32.5/830	15.5/380	1,200
6800	51/1295	22/565	48/1220	20/508	8/203	45/1,143	18/457	1,200

CAD drawings in .dwg and .pdf format are available for download at www.tempest.biz

Thunder Outdoor Lighting Enclosures

Thunder + brings you all the protection and sophistication of Tempest's worldbeating projector enclosures, including condensation protection, and minimum temperature maintenance in cold climates. Available options include positive pressure protection in corrosive environments, remote monitoring and more.

Tempest System Manager

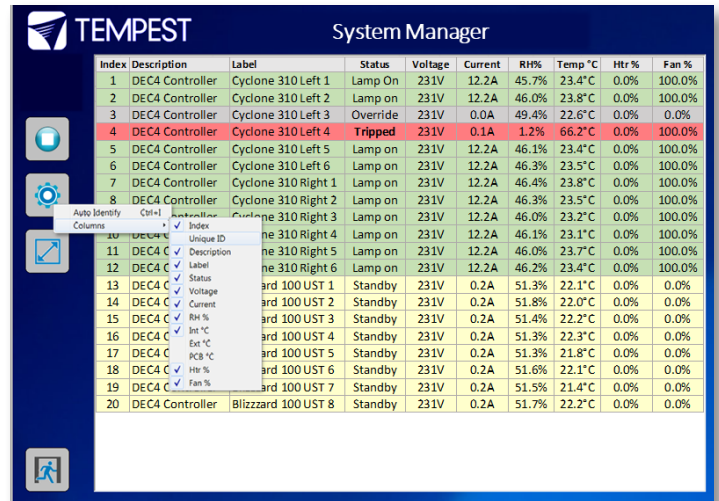
TSM is a Windows app running on a local PC connected to your enclosures over a local area network.

TSM discovers any Tempest enclosures with DEC controllers present on the network at initialization, and monitors system attributes in real time, including lamp, fan and heater status, temperature, relative humidity and more.

TSM may also be used to upload device firmware updates to enclosure controllers over the network, without having to visit each enclosure.

The TSM license includes 12 months unlimited user support from Tempest electronics partner JESE, and continuing support is available for a modest annual fee.

Thunder + DEC Control



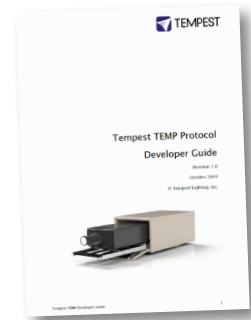
Index	Description	Label	Status	Voltage	Current	RH%	Temp °C	Htr %	Fan %
1	DEC4 Controller	Cyclone 310 Left 1	Lamp On	231V	12.2A	45.7%	23.4°C	0.0%	100.0%
2	DEC4 Controller	Cyclone 310 Left 2	Lamp on	231V	12.2A	46.0%	23.8°C	0.0%	100.0%
3	DEC4 Controller	Cyclone 310 Left 3	Override	231V	0.0A	49.4%	22.6°C	0.0%	0.0%
4	DEC4 Controller	Cyclone 310 Left 4	Tripped	231V	0.1A	1.2%	66.2°C	0.0%	100.0%
5	DEC4 Controller	Cyclone 310 Left 5	Lamp on	231V	12.2A	46.1%	23.4°C	0.0%	100.0%
6	DEC4 Controller	Cyclone 310 Left 6	Lamp on	231V	12.2A	46.3%	23.5°C	0.0%	100.0%
7	DEC4 Controller	Cyclone 310 Right 1	Lamp on	231V	12.2A	46.4%	23.8°C	0.0%	100.0%
8	DEC4 Controller	Cyclone 310 Right 2	Lamp on	231V	12.2A	46.3%	23.5°C	0.0%	100.0%
9	DEC4 Controller	Cyclone 310 Right 3	Lamp on	231V	12.2A	46.0%	23.2°C	0.0%	100.0%
10	DEC4 C	Cyclone 310 Right 4	Lamp on	231V	12.2A	46.1%	23.1°C	0.0%	100.0%
11	DEC4 C	Cyclone 310 Right 5	Lamp on	231V	12.2A	46.0%	23.7°C	0.0%	100.0%
12	DEC4 C	Cyclone 310 Right 6	Lamp on	231V	12.2A	46.2%	23.4°C	0.0%	100.0%
13	DEC4 C	ard 100 UST 1	Standby	231V	0.2A	51.3%	22.1°C	0.0%	0.0%
14	DEC4 C	ard 100 UST 2	Standby	231V	0.2A	51.8%	22.0°C	0.0%	0.0%
15	DEC4 C	ard 100 UST 3	Standby	231V	0.2A	51.4%	22.2°C	0.0%	0.0%
16	DEC4 C	ard 100 UST 4	Standby	231V	0.2A	51.3%	22.3°C	0.0%	0.0%
17	DEC4 C	ard 100 UST 5	Standby	231V	0.2A	51.3%	21.8°C	0.0%	0.0%
18	DEC4 C	ard 100 UST 6	Standby	231V	0.2A	51.6%	22.1°C	0.0%	0.0%
19	DEC4 C	ard 100 UST 7	Standby	231V	0.2A	51.5%	21.4°C	0.0%	0.0%
20	DEC4 Controller	Blizzard 100 UST 8	Standby	231V	0.2A	51.7%	22.2°C	0.0%	0.0%

TEMP Protocol

Tempest also publishes a simple protocol for use by integrators wishing to monitor enclosures over an existing control network.

Connection options are the same as for System Manager, but the Ethernet board is 51.D4.15

Download the TEMP Developer Guide [here](#):



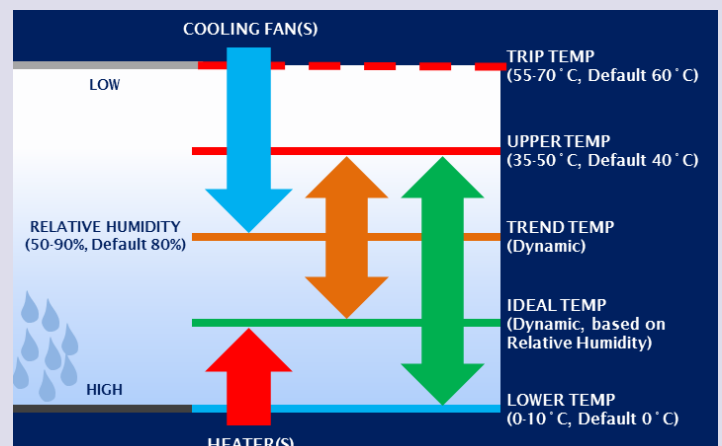
Goldilocks™

How do we keep projectors from roasting when it's 50°C and there's no shade? And prevent condensation from destroying your projector overnight?

Tempest's unique Goldilocks™ Operating System (patents pending) brings enclosure control to a new level.

Goldilocks keeps the air temperature inside your enclosure just right, removing heat from the projector when the lamp is on or when the enclosure is heated by the sun. We're changing the air every few seconds.

Goldilocks uses a heater to maintain a minimum temperature in cold climates.



And Goldilocks tracks temperature and humidity 24/7, keeping relative humidity inside your enclosure just right by using

heaters to raise the air temperature when needed, adapting constantly to prevent deadly condensation.

Thunder

Outdoor Lighting Enclosures

Ordering Guide

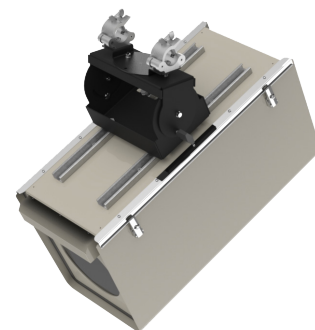
Part Number Guide

examples: 6600.US, 6700.IN.+

Model	Description	Electrical	Specification Level
6600	Thunder	US 120V, NEMA standard	Blank Standard, MiniDEC
6690	Thunder, Rosco X-Effect	<i>North America</i>	Control
6700	Thunder Stretch	IN 230V, CE Standard	
6800	Thunder X-Stretch	<i>International</i>	+ Plus - DEC Control

Options and Accessories

Model	Description
6500.XYZ	XYZ Mount, Pole
6500.XYZ.T	XYZ Mount, Truss
6500.XYZ.TB	XYZ Mount, Turtle Base
6600.AM	Thunder 6600 Angle Mount Kit
6690.AM	Thunder 6690 Angle Mount Kit
6700.AM	Thunder 6700 Angle Mount Kit
6800.AM	Thunder 6800 Angle Mount Kit
4900.MC	Thunder Pipe Clamp, 50mm/2in OD Pipe
4925.MC	Thunder Pipe Clamp, 63mm/2.5in OD Pipe
6500.013.2	Replacement Foam Filter (Thunder)
51.HF.11	Replacement Salt Fog Filter (Thunder +)
6600.TI	Thunder 6600 Thermal Insulation Option
6690.TI	Thunder 6690 Thermal Insulation Option
6670.TI	Thunder 6700 Thermal Insulation Option
6680.TI	Thunder 6800 Thermal Insulation Option
51.PP	Thunder + Positive Pressure Option
51.D4.15	Thunder + Ethernet Option (TEMP)
51.D4.23	Thunder + Ethernet Option (Tempest System Manager)
51.TSM.10	Tempest System Manager, up to 10 enclosures
51.TSM.25	Tempest System Manager, up to 25 enclosures
51.TSM.50	Tempest System Manager, over 25 enclosures



Shipping Weights/Dimensions

Thunder 6600	36"x18"x18"(h), 45lb	91 x 46 x 46cm, 20kg
Thunder 6690	36"x18"x18"(h), 30lb	91 x 46 x 46cm, 14kg
Thunder 6700	48"x24"x24"(h), 58lb	122 x 117 x 117cm, 26kg
Thunder 6800	48"x24"x24"(h), 70lb	122 x 117 x 117cm, 32k

All Schedule B Export Code: 9405.99.0000

All Thunder products are built to order. Please consult factory for lead times.

All sales are subject to Tempest Lighting, Inc. Standard Terms and Conditions of Sale, available for download at www.tempest.biz.

Custom Colors

All the enclosures in this brochure are shown in our standard light bronze finish.

Black, white, or any RAL color are available to special order.



Thunder Configurator

Please complete this form and email to us at info@tempest.biz

Name	
Company	
Email	
Phone	
Project Name and Location	
Luminaire Make and Model	
Thunder Model	_____
Specification Level	Thunder <input type="checkbox"/> Thunder + <input type="checkbox"/>
Quantity	
Destination Country	
Install Date	
Orientation	Cover Up <input type="checkbox"/> Down <input type="checkbox"/> Horizontal <input type="checkbox"/>
Control (Thunder + only)	
Ethernet	For TEMP <input type="checkbox"/> For TSM <input type="checkbox"/>
Positive Pressure	No <input type="checkbox"/> Yes <input type="checkbox"/> Quantity:
Tempest System Manager	No <input type="checkbox"/> Yes <input type="checkbox"/> Quantity:
6500.013.2 Spare Foam Filter	No <input type="checkbox"/> Yes <input type="checkbox"/> Quantity:
51.HF.11 Spare Salt Fog Filter	No <input type="checkbox"/> Yes <input type="checkbox"/> Quantity:
Options	
Thermal Insulation	No <input type="checkbox"/> Yes <input type="checkbox"/> Quantity:
6500.XYZ Pole Mount	No <input type="checkbox"/> Yes <input type="checkbox"/> Quantity:
6500.XYZ.T Truss Mount	No <input type="checkbox"/> Yes <input type="checkbox"/> Quantity:
6500.XYZ.TB Floor Mount	No <input type="checkbox"/> Yes <input type="checkbox"/> Quantity:
6xxx.AM Angle Mount	No <input type="checkbox"/> Yes <input type="checkbox"/> Quantity:
4900.MC Pipe Clamp	No <input type="checkbox"/> Yes <input type="checkbox"/> Quantity:
4925.MC Pipe Clamp	No <input type="checkbox"/> Yes <input type="checkbox"/> Quantity:
Color	Standard, Light Bronze <input type="checkbox"/> Black <input type="checkbox"/> White <input type="checkbox"/>
	Custom, RAL # _____ Gloss Level _____%

Custom Requests:

Factory Use Only:	
SO Number	
Date	
Electrical	IEC <input type="checkbox"/> NEMA <input type="checkbox"/>

