



# Cyclone

Outdoor  
Projector  
Enclosures  
20-50K



# Cyclone

## Outdoor Projector Enclosures

Cyclone is the world's most popular outdoor enclosure for permanent installation of large format video projectors in any climate, for video mapping, outdoor attractions, advertising and outdoor movies.

Cyclone models are tailored specifically for each projector type. Each Cyclone model has been thoroughly tested and approved with its designated projector before being released for production.

Cyclone comes with all the features you need:

- *Lightweight aluminum welded construction*
- *Powerful AC fan*
- *Salt fog filtering, with positive pressure option*
- *Available RDM, TCP/IP or web-based monitoring options*
- *NOW: >98% visible light transmission, using tempered, AR-coated glass*

Standard Cyclones come with side doors and the option of projector slide to left or right. Versions with front or back slide are available to special order.

All Cyclone models feature Tempest's patented Digital Enclosure Control system (DEC4™), now available with optional remote monitoring over your TCP/IP network.

Tempest's patented DEC4 controller will keep your projector warm when it's cold, cool when it's hot, and will never allow deadly condensation to form.

And all Cyclone models feature Tempest's hydrophobic inlet filters, blocking salt, oil and other pollutants from getting near your projector.

### Portrait

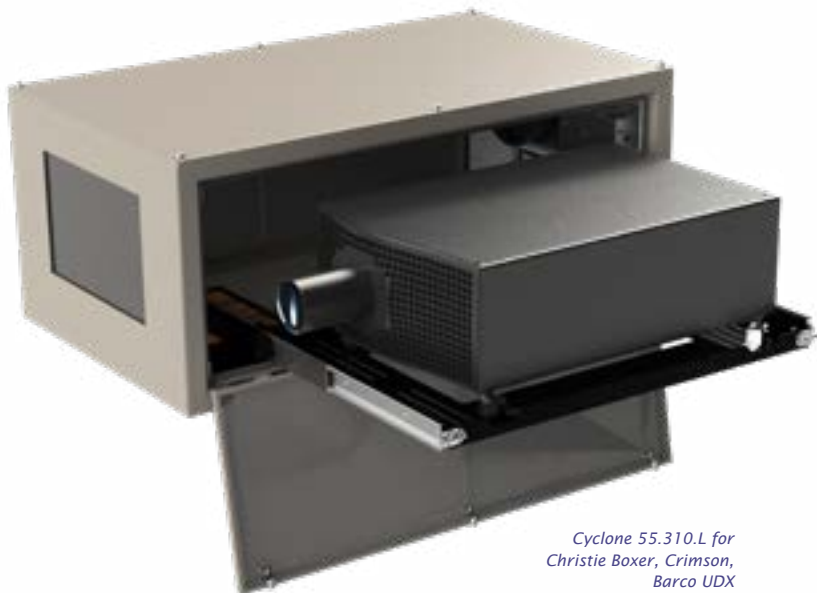
Cyclone portrait enclosures are available to order for all applicable projectors.

### Ultra-Short-Throw

Cyclone is ready for the UST revolution — now you don't need to own the plot across the street to project on the front of your building! See the next page for more about UST configurations.

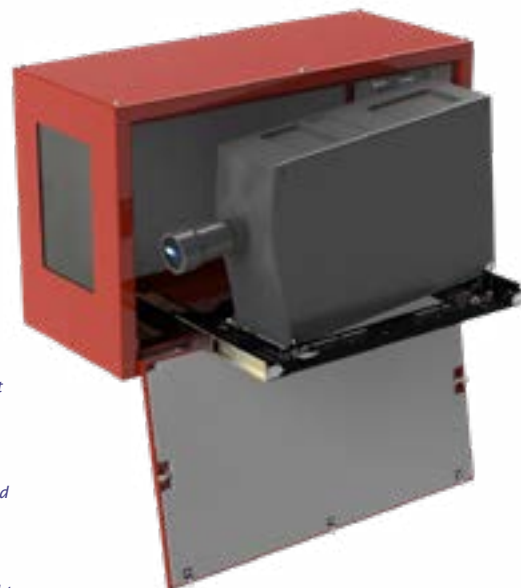
### Cyclovator

Cyclovator allows any Cyclone enclosure to be tilted up to 60 degrees up or down, and restored to horizontal for safe projector service access.



*Cyclone 55.310.L for Christie Boxer, Crimson, Barco UDX*

*Tip: Specify left (shown here) or right slide when ordering*



*Cyclone 55.310P Portrait enclosure.*

*Tip: Cyclone's Portrait mounts vary by projector type, and generally allow for  $\pm 5^\circ$  tilt adjustment to compensate for limited horizontal lens shift..*

*Tip: Most of the shots in this brochure show Tempest standard light bronze powder coat finish, but you can specify white, black, or any RAL color when ordering.*

*The Cyclovator 2 under this Cyclone 55.210 can tilt its projector up to 60° either up or down, with a repeatable stop and a positive lock for accurate show positioning.*

*Tip: Use Cyclovator 2 feet-up to hang Cyclones at any angle from a truss or structure*

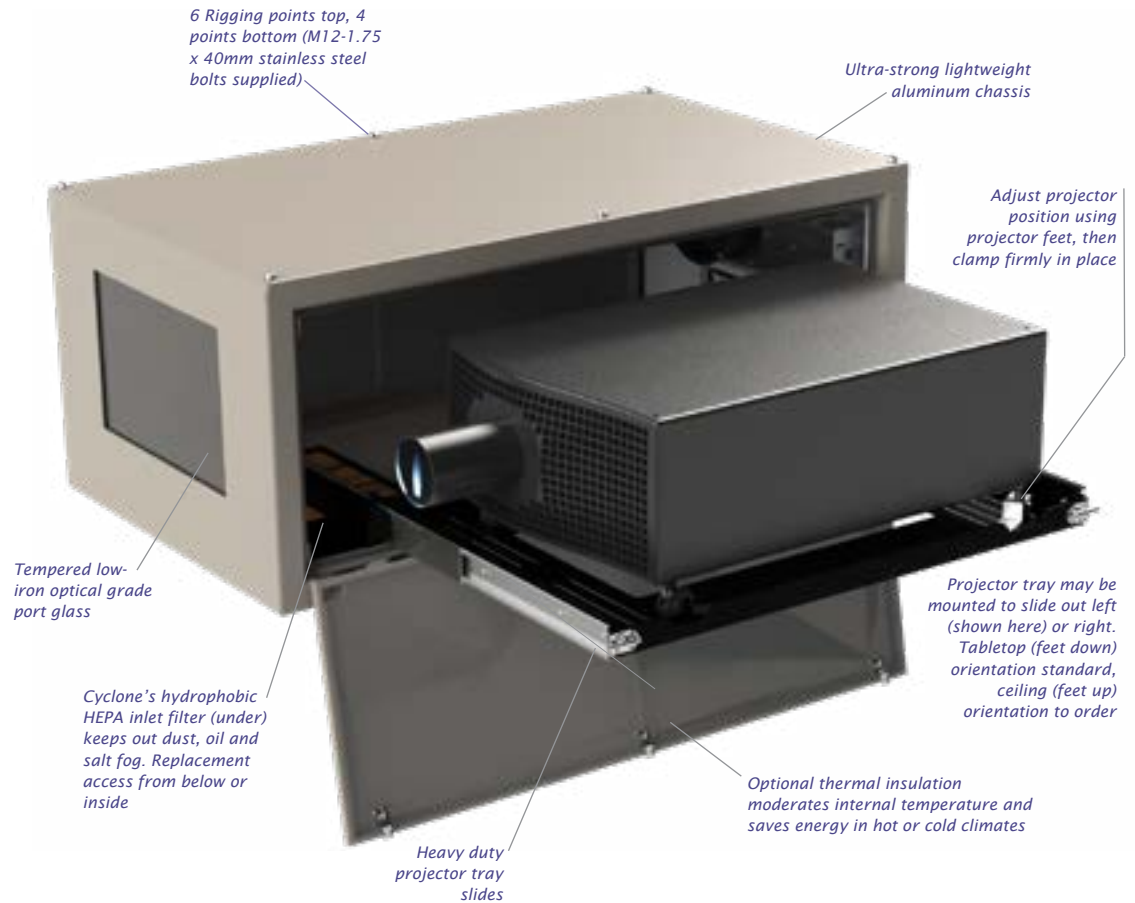


*Tip: Specify the inlet cowl shown here if the tilt angle will exceed 10° up or down.*

# Cyclone

## Outdoor Projector Enclosures

## What's in the Box?



High power AC exhaust fan changes the air inside the enclosure every few seconds when the projector is on.

Note: with the Positive Pressure option, the fan runs continuously at low speed when not required for cooling.

Exhaust fan cowl with insect screen.

All hardware and fasteners are corrosion-resistant stainless steel

DEC4 controller, including fan control and comms option cards — easy access from outside and LOTS of wiring space!

(shown here with cover removed)

Power and Signal Conduit Entries — 29mm diameter (US 3/4" NPT). And there's an alternate set on the underside.

DEC4 Enclosure Controller with patented Goldilocks™ OS and remote monitoring option

Side doors lock with a special heavy duty security key



# Cyclone Outdoor Projector Enclosures

Now that UST lenses are readily available for large format projectors, the creative community is getting excited about their amazing potential for mapping, informational signs and advertising. UST outdoor enclosures allow you to paint the outside of your building without having to own the block across the street!

There are now a bewildering number of different UST configurations on the market, and it's critically important that we understand precisely which one you are planning to use. Each type will have different beam geometry, and these can be very challenging to accommodate, so most UST enclosures are in fact custom designs.

Cyclone UST enclosures may be configured to mount above the image (projecting down) or below it (projecting up).

The lenses may be fixed but the projector mount allows for adjustment of pan, tilt and roll when you get to the job site.



Some 90-degree UST lenses can be mounted in different orientations (see right panel). This one shows a Cyclone 55.310.U90R enclosure, with a Christie Crimson, with the UST lens pointing right.

## Ultra Short Throw Lenses...

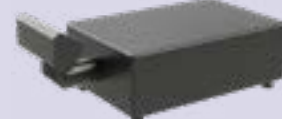


*Cyclone 55.320.U with Panasonic PT-RZ31K and UST Lens.*

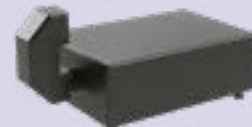
*Shown here feet-up, projecting down, but may also be configured feet-down, projecting up.*

### Which UST?

This can be confusing. Please specify the UST lens configuration when ordering:



*Periscope Style A*



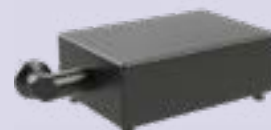
*Periscope Style B*



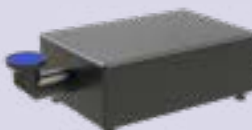
*Right-angle Left*



*Right-angle Down*



*Right-angle Right*



*Right-angle Up*

We will also need to know:

*Projector and lens model #s*

*Projector - feet up or down?*

*Projector - Landscape or Portrait?*

# Cyclone

Outdoor  
Projector  
Enclosures

## ...and Mirrors



There are several ways to project straight down onto a floor, a stage, even an ice rink — we have made enclosures to hold a projector vertically with a standard lens pointing straight down, or maybe one of the new generation of right-angle UST lenses will work for you.

A simple solution is to extend the length of a standard landscape enclosure, and add a front-silvered mirror in front of the lens, with the port glass

moving to the bottom of the housing.

This can also work well for projecting to left or right — just talk to us and we'll figure out the best solution together...

*Cyclone 55.320.M with Panasonic PT-RZ31K and front-silvered Mirror.*

*The mirror angle is adjustable for fine-tuning on site.*

***These floor projections at the Festung Xperience in Dresden, Germany were made using custom Tempest Mirror enclosures.***

©TAMSCHICK MEDIA+SPACE, Berlin





# Cyclone

Outdoor  
Projector  
Enclosures

Working with our good friends at Vienna's *Dynamic Projection Institute*, Tempest has created custom Cyclone enclosures to incorporate these magical dynamic moving mirror devices in some prestigious international projects.

Contact Tempest to talk about your next dynamic projection project!

## ...and Moving Mirrors!



This custom Cyclone installation, in Kumamoto, Japan, features a Barco UDX projector and a Dynamic Projection Institute mirror head.

*Design and integration by S.C. Alliance — see their amazing video:*



# Cyclone

## Outdoor Projector Enclosures

All Cyclones come with six M12 threaded sockets on the top surface, and four on the bottom. **So you can bolt the enclosure directly to your structure, or use them to attach these Tempest rigging accessories.**

Stainless steel bolts are provided for attachment to any suitable support structure.

Tempest recommends only the use of stainless steel hardware for installing enclosures outdoors.

### Unistrut Kit

Easy attachment to any structure using these two Unistrut rails. Use standard Unistrut hardware to attach to your structure, without worrying about precise hole locations.

Unistruts may be mounted top (shown here) or bottom.

*Note: A Unistrut Kit is required for use with Cyclovator 2.*



*Cyclone 55.310 with 55.UR.310 Unistrut Kit. Unistrut rails may be mounted top or bottom.*

*Two Cyclone 55.310.L with 51.SK Stacking Kit. The stacking kit gives the enclosures the required 3" [75] airgap, and assembles easily with clevis pins*



### Stacking Kit

Stack two or more Cyclone enclosures of the same type using this stacking kit.

Male and female parts attach to the threaded corner holes, and are simply joined together using a stainless steel clevis pin.

Maximum two enclosures stacked if hung, up to three with ground support.

*See also the swivel stacking kit on the next page.*

*Cyclone 55.310 with 51.C2 Cyclovator.*

*NOTE: Cyclovator requires 51.UR.xxx Unistrut Rail Kit*



### Cyclovator 2

Our fabled Cyclovator tucks snugly under the center of gravity of the enclosure.

Use Cyclovator on the ground to cover tall buildings, or on a rooftop to project to ground level. Either way, Cyclovator allows you to project up to about 60° off horizontal, and then bring the projector safely back to horizontal for service access.

You can even bolt this Cyclovator to a truss or other structure and use it to hang any Cyclone enclosure at any angle.

In every case, Cyclovator has a positive index ring that you set to come back to your show position with absolute repeatability, time after time...

# Cyclone

## Outdoor Projector Enclosures

### Angle Mount

A simple fixed mounting Kit for one or two Cyclone enclosures, with a range 10-45° up (shown here) or down — simply mount with the enclosure(s) facing the other way.

Stacking two enclosures is not recommended with a tilt angle >30°.

55.AM2 Cyclone 210-305

55.AM3 Cyclone 310, 314, 324

55.AM4 Cyclone 320, 525

*To stack two enclosures, order the appropriate Angle Mount Kit, plus one stacking Kit.*

### Sun Shade

This aluminum panel mounts easily on the top of any Cyclone enclosure to provide extra daytime protection in hot, sunny climates. The cover not only deflects sunlight, but also provides a 75mm (3in) air gap between the shade and the enclosure top, promoting convective air movement. Use in conjunction with 55.TI thermal insulation in sunny areas with daytime temperatures frequently above 35°C (95°F).

*See also Thermal Insulation Kit, next page.*

### Swivel Stacking Kit

Stack two Cyclone enclosures (must be the same model), and angle them up to 40 degrees apart — handy for short-throw edge blending jobs.

Stainless steel stacking kits attach to M12 rigging points, and locking bolts are provided to secure rotation angle when aligned.

Swivel Stacking kit part number must match Cyclone enclosure — eg 55.SS.310 is the Swivel Stacking kit for two Cyclone 55.310 enclosures shown here.

## Rigging Options



*Two Cyclone 55.210 Landscape enclosures with a 55.AM2 Angle Mount kit and a 51.SK Stacking Kit*



*55.SH.xxx Sun Shade attaches easily to the Cyclone's top rigging points. Note that the xxx matches the enclosure part number, eg 55.SH.310 for Cyclone 55.310 shown here.*

### Custom Rigging Options

Don't see what you need? We do a lot of custom designs and we'll be happy to work with you to find the best solution for your project.



# Cyclone

## Outdoor Projector Enclosures

### Don't panic!

Cyclone enclosures have been in use for years in some very warm places — think Singapore, Dubai, Las Vegas. In many cases our standard enclosures will protect your equipment without problems.

Outdoor projection, by definition, is used at night. So you need to think about daytime and showtime temperatures quite separately:

#### Daytime — Insulation

In hot locations (anywhere with daytime temperature regularly exceeding 35°C), we strongly recommend specifying the Cyclone Thermal Insulation option (55.TI.xxx). This is a factory-fitted thermal insulation lining to the enclosure that effectively moderates daytime temperatures, reducing stress on your equipment and prolonging fan life.

#### Daytime — Hot Sun

If your enclosures will be regularly exposed to hot sun, the Cyclone Sun Shade (55.SH.xxx) is a simple, low-profile aluminum cover, that protects the enclosure from the midday sun and creates a 75mm (3in) air gap above the enclosure body. This protects the enclosure and its contents from the worst of the sun anywhere in the tropics or in desert conditions.

#### Showtime — Cooling

Cyclone enclosures generally deliver cooling air to the projector at 1-2°C (3-4°F) above the outside ambient temperature, when the projector is running. So if your projector is good for a couple of degrees above the likely ambient at show time, Cyclone is for you.

If the expected ambient is higher than your projector's comfort level (and see the sidebar to the right here), then you should take a look at our Oasis system, with integrated active cooling.

## What to do when it's HOT

### Tempest Oasis

#### Outdoor Projection Active Cooling Systems

In locations where show time ambient temperatures exceed your projectors' comfort level, you need to look at Oasis.

Oasis uses inverter heat pump technology to maintain a constant comfortable temperature for your projector, in any ambient between -15 and 50°C (5-122°F).

Oasis has another important benefit for RGB laser projectors: with a constant operating temperature, Oasis removes the risk of color shift as the laser light engines react differently to changes in temperature.

Find out more about Oasis by clicking on the link below:



### Tip:

#### Read the Small Print

*The conversion from lamps to laser light sources is now complete, we may never build another lamp-based enclosure, and that's generally a Good Thing.*

*But you need to study those laser projector specs very carefully — for example:*

#### Environmental

*The spec says 45°C (113°F) so we're good, right? Not necessarily. Read on and you may well find that light output is limited above, say, a 25°C (77°F) ambient. This might not be a big deal if it only happens a few nights of the year in your location, but if it's hot where you are, then it might...*

#### Altitude

*Most outdoor jobs are at or not far from sea level, but what if you're in the mountains? Check the effect of altitude on light output and environmental specs...*

*Doing your homework at the planning stage can save a lot of time and trouble on the job site...*

# Cyclone

## Outdoor Projector Enclosures

### Climate and Filter Protection

#### 55.xxx.TI Thermal Insulation Kit

Cyclone enclosures may be used safely in climates with temperatures ranging from 0-40°C. In hot climates where the enclosures may be exposed to direct sun during the day, and in cold areas where the temperature may drop below freezing, we offer a factory installed Thermal Insulation kit. With the TI kit Cyclone may be used in temperatures down to -20°C, and it will also thrive in direct sun with daytime temperatures above 50°C.

*See also Sun Shade on previous page.*

#### Positive Pressure and Salt Air

We do a lot of cruise ship jobs, as well as beach resorts and attractions where salt air can be a real problem. Now all Tempest outdoor enclosures can be supplied with a Constant Positive Pressure setting that runs the enclosure fan(s) all the time at low power, maintaining just enough positive pressure to prevent salt or other pollutants

from sneaking in the back door when the projector is not running.

Specify option 55.PP.

#### 55.IC.xx Inlet Cowl

Use this cowl to keep rain out of the inlet filter if the Cyclone enclosure is angled more than 20° up or down.

#### 55.DFB.xx Desert Filter Baffle

In desert areas severe windblown sand may damage Cyclone's inlet filter, allowing sand and dust ingress in sandstorm conditions. The desert baffle slows down these particles, preventing filter abrasion.



Desert Filter Baffle

## More Options

#### 55.WW Windshield Wiper Kit

This stainless steel marine wiper keeps your port glass clean in rain or light snow. It's self-parking, so there's no chance the blade will stop in front of the lens.

Control over your network using TEMPS (requires ethernet comms option).



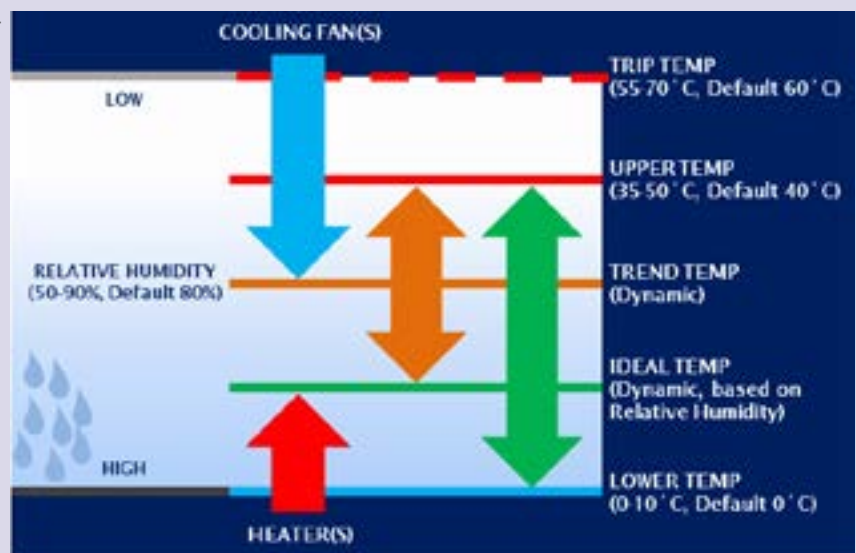
## Goldilocks™

How do we keep projectors from roasting when it's 50°C and there's no shade?

And prevent condensation from destroying your projector overnight?

Tempest's unique Goldilocks™ Operating System (patents pending) brings enclosure control to a new level.

Goldilocks keeps the air temperature inside your enclosure just right, removing heat from the projector when the lamp is on or when the enclosure is heated by the sun. We're changing the air every few seconds.



Goldilocks uses a heater to maintain a minimum temperature in cold climates.

And Goldilocks tracks temperature and humidity 24/7, keeping relative humidity inside your

enclosure just right by using heaters to raise the air temperature when needed, adapting constantly to prevent deadly condensation.

# Cyclone Outdoor Projector Enclosures

Tempest System Manager is a Windows app running on a local PC connected to your enclosures over a local area network.

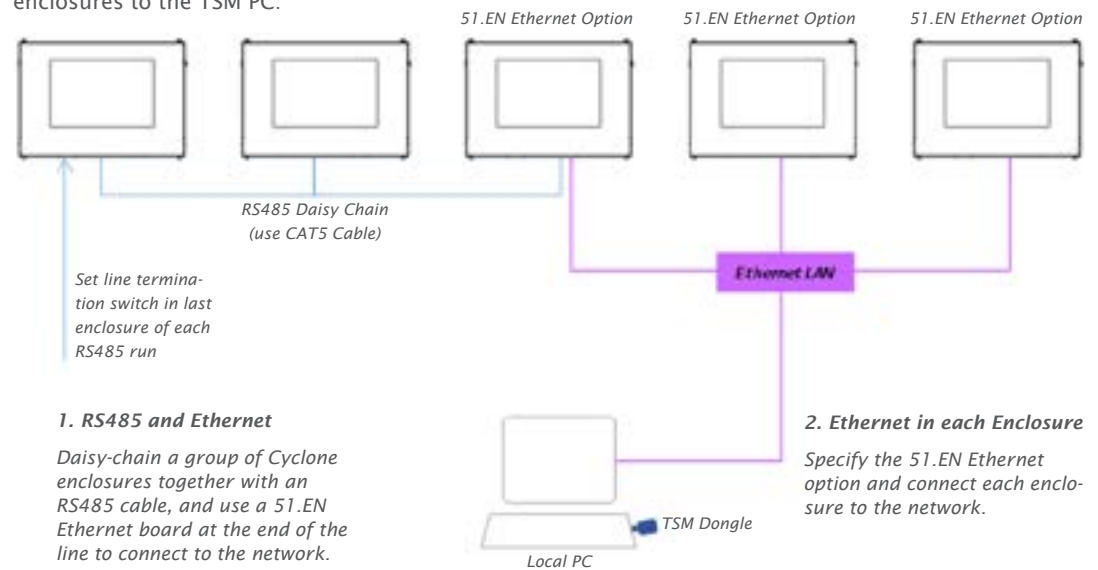
TSM discovers any Tempest enclosures present on the network at initialization, and monitors system attributes in real time, including lamp, fan and heater status, temperature, relative humidity and more.

TSM may also be used to upload firmware updates to enclosure controllers over the network, without having to visit each enclosure.

The TSM license includes 12 months unlimited user support from Tempest electronics partner JESE, and continuing support is available for a modest annual fee.

## Monitoring Connections

There are two ways to connect enclosures to the TSM PC:



# Tempest System Manager

Index	Description	Label	Status	Voltage	Current	RH%	Temp °C	RH%	Fan %
1	DIC4 Controller	Cyclone 310 Left 1	Lamp On	23.0V	0.21A	46.3%	23.4°C	0.0%	100.0%
2	DIC4 Controller	Cyclone 310 Left 2	Lamp on	23.0V	0.21A	46.0%	23.8°C	0.0%	100.0%
3	DIC4 Controller	Cyclone 310 Left 3	Overide	23.0V	0.0A	49.4%	23.8°C	0.0%	0.0%
4	DIC4 Controller	Cyclone 310 Left 4	Tripped	23.0V	0.3A	1.2%	66.2°C	0.0%	100.0%
5	DIC4 Controller	Cyclone 310 Left 5	Lamp on	23.0V	0.21A	46.3%	23.4°C	0.0%	100.0%
6	DIC4 Controller	Cyclone 310 Left 6	Lamp on	23.0V	0.21A	46.3%	23.5°C	0.0%	100.0%
7	DIC4 Controller	Cyclone 310 Right 1	Lamp on	23.0V	0.21A	46.4%	23.8°C	0.0%	100.0%
8	DIC4 Controller	Cyclone 310 Right 2	Lamp on	23.0V	0.21A	46.3%	23.5°C	0.0%	100.0%
9	DIC4 Controller	Cyclone 310 Right 3	Lamp on	23.0V	0.21A	46.0%	23.2°C	0.0%	100.0%
10	DIC4 Controller	Cyclone 310 Right 4	Lamp on	23.0V	0.21A	46.3%	23.1°C	0.0%	100.0%
11	DIC4 Controller	Cyclone 310 Right 5	Lamp on	23.0V	0.21A	46.0%	23.7°C	0.0%	100.0%
12	DIC4 Controller	Cyclone 310 Right 6	Lamp on	23.0V	0.21A	46.2%	23.8°C	0.0%	100.0%
13	DIC4 Controller	and 300 USB 8	Standby	23.0V	0.2A	51.3%	22.1°C	0.0%	0.0%
14	DIC4 Controller	and 300 USB 2	Standby	23.0V	0.2A	50.8%	22.0°C	0.0%	0.0%
15	DIC4 Controller	and 300 USB 9	Standby	23.0V	0.2A	51.4%	22.1°C	0.0%	0.0%
16	DIC4 Controller	and 300 USB 1	Standby	23.0V	0.2A	50.8%	22.8°C	0.0%	0.0%
17	DIC4 Controller	and 300 USB 5	Standby	23.0V	0.2A	51.3%	21.8°C	0.0%	0.0%
18	DIC4 Controller	and 300 USB 6	Standby	23.0V	0.2A	50.0%	22.1°C	0.0%	0.0%
19	DIC4 Controller	and 300 USB 3	Standby	23.0V	0.2A	51.5%	21.4°C	0.0%	0.0%
20	DIC4 Controller	Blizzard 300 USB 8	Standby	23.0V	0.2A	52.3%	22.2°C	0.0%	0.0%

## TSM Model Numbers

51.TSM.10	Up to 10 enclosures
51.TSM.25	Up to 25 enclosures
51.TSM.50	Over 25 enclosures

# TEMP Protocol

Tempest also publishes a simple protocol for use by integrators wishing to monitor enclosures over an existing control network.

Connection options are the same as for System Manager.

Download the TEMP Developer Guide [here](#):



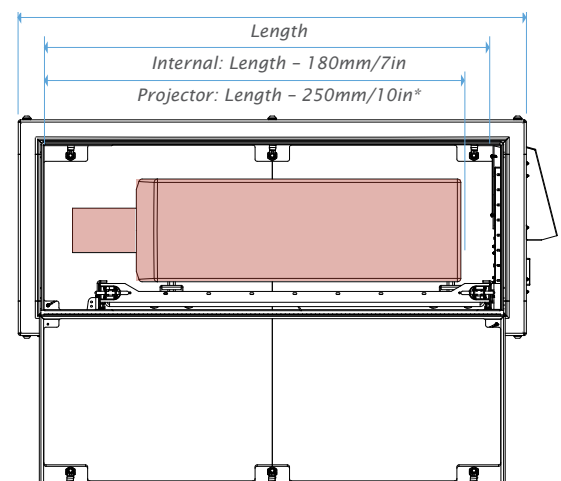
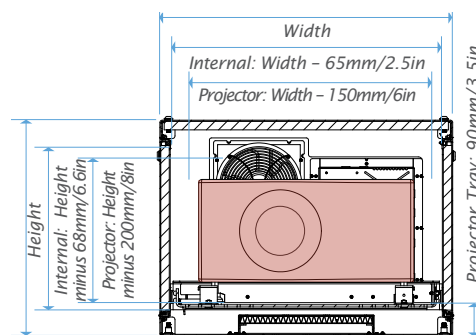


# Cyclone

## Outdoor Projector Enclosures

## Enclosure Specification

Construction			
Materials	Aluminum, Stainless Steel		
Hardware/fasteners	Stainless Steel		
RoHS	Compliant		
Port Glass	Tempered Starphire glass, AR coated, >98% transmission		
Dimensions	See product brochure listing, CAD drawings		
Weight	See product brochure listing		
Paint Finish - standard	Polyester powder coat		
Paint Finish - optional, salt air	Zinc-rich primer, polyester powder coat		
Recommended max Projector/Lens:	Recommended *	Absolute	
	Length – Enclosure Length minus:	250mm/10in	180mm/7.1in
	Width – Enclosure Width minus:	150mm/6in	65mm/2.5in
	Height – Enclosure Height minus:	200mm/8in	168mm/6.6in
	* See illustration below		
Environmental			
Temperature (standby)	-25°C to 50°C (-13°F to 122°F)		
Temperature (operating)	-20°C to 40°C (-4°F to 104°F)		
Relative Humidity	0-95%		
Standards – North America	UL50		
NEMA Rating	NEMA 3R (4X with ActiveCool)		
Standards – International	IEC/EN 60529:1991/AC:2016-12		
IP Rating	IP 54 (IP 66 with ActiveCool)		
IK Rating	IK08, to IEC/EN 62262 (2002)		
Max Noise Level (@ 1m)	59dBA		
Electrical			
Standards – North America	UL508, UL50		
Standards – International	Low Voltage Directive 2014/35/EU		
Standards – International	EN 60065 : 2014/AC:2016		
Standards – China	Certified CCC Exempt		
Voltage	200-250VAC, 50-60Hz		
Projector power	See product Brochure listing		
Enclosure power (max)	1,100W **		
	** Includes 900W heater, which cannot operate when projector is running. Allow for projector power plus 200W.		
EMC	EN 61000-6-3:2007+A1:2011		
	EN61000-6-1:2007		
	EN55015:2019/A11:2020		



### Projector Size Guide

*\* To prevent overheating, allow 75mm/3in airflow clearance behind projector.*

# Cyclone Ordering Guide

Cyclone Projector Enclosure Dimensions <sup>1</sup>			Enclosure								Shipping							
Model	Orientation <sup>2</sup>	Typical Projectors <sup>3</sup>	L (cm)	W (cm)	H (cm)	Kg	L (in)	W (in)	H (in)	Lb	L (cm)	W (cm)	H (cm)	Kg	L (in)	W (in)	H (in)	Lb
55.200.L	Landscape	Epson EB-PU 22xx	86	86	46	46	34	34	18	101	107	107	71	82	42	42	28	181
55.200.P	Portrait		86	46	91	46	34	18	36	101	107	66	117	82	42	26	46	181
55.202.L	Landscape	Panasonic PT-RQ25K, DPI M-Vision 23K	112	76	46	55	44	30	18	122	132	97	71	92	52	38	28	202
55.202.P	Portrait		112	46	76	55	44	18	30	122	132	66	102	92	52	26	40	202
55.204.L	Landscape	Christie M4K-25	117	76	51	58	46	30	20	127	137	97	76	94	54	38	30	207
55.204.P	Portrait		117	51	76	58	46	20	30	127	137	71	102	94	54	28	40	207
55.210.L	Landscape	Panasonic PT-RZ21K, Barco G100	127	86	51	78	50	34	20	171	147	107	76	114	58	42	30	251
55.210.P	Portrait		127	56	86	78	50	22	34	171	147	76	112	114	58	30	44	251
55.212.L	Landscape	Barco UDM/Njord	122	81	56	76	48	32	22	168	142	102	81	113	56	40	32	248
55.212.P	Portrait		122	61	81	76	48	24	32	168	142	81	107	113	56	32	42	248
55.250.L	Landscape	Epson L-30000	127	94	51	89	50	37	20	196	147	114	76	125	58	45	30	276
55.250.P	Portrait		127	51	102	89	50	20	40	196	147	71	127	125	58	28	50	276
55.305.L	Landscape	Panasonic PT-RQ35K, RZ34K, Barco UDM	132	81	61	87	52	32	24	192	152	102	86	135	60	40	34	297
55.305.P	Portrait		132	61	81	87	52	24	32	192	152	81	107	135	60	32	42	297
55.310.L	Landscape	Barco UDX 40K	137	86	61	98	54	34	24	217	157	107	86	146	62	42	34	322
55.310.P	Portrait		137	61	86	98	54	24	34	217	157	81	112	146	62	32	44	322
55.314.L	Landscape	Christie Griffyn 32K	147	86	61	103	58	34	24	226	168	107	86	150	66	42	34	331
55.314.P	Portrait		147	61	86	103	58	24	34	226	168	81	112	150	66	32	44	331
55.322.L	Landscape	DPI Titan Laser 37K	142	94	61	122	56	37	24	269	163	114	86	170	64	45	34	374
55.322.P	Portrait		142	61	102	122	56	24	40	269	163	81	127	170	64	32	50	374
55.514.L	Landscape	Christie Griffyn 50K	147	94	61	118	58	37	24	260	168	114	86	166	66	45	34	365
55.514.P	Portrait		147	61	97	118	58	24	38	260	168	81	122	166	66	32	48	365
55.522.L	Landscape	DPI Insight 8K 37K	163	94	71	173	64	37	28	381	183	114	97	230	72	45	38	506
55.522.P	Portrait		163	71	112	173	64	28	44	381	183	91	137	230	72	36	54	506
55.525.L	Landscape	Panasonic PT-RQ50K	163	94	74	137	64	37	29	302	183	112	91	194	72	44	36	427
55.525.P	Portrait		163	66	91	137	64	26	36	302	183	86	117	194	72	34	46	427

<sup>1</sup> Due to continuous product development, weights and dimensions are subject to change. Check with Tempest before construction work.

<sup>2</sup> Landscape and Portrait versions shown here. UST versions are custom or semi-custom. Please consult Tempest for details

<sup>3</sup> For projectors not shown here, please contact Tempest — we will be happy to accommodate any projector type

All Cyclone products are built to order. Please contact Tempest for lead times.

All sales are subject to Tempest Lighting, Inc. Standard Terms and Conditions of Sale, available for download at [www.tempest.biz](http://www.tempest.biz).

All Schedule B Export Code: 9405.99.0000



## Custom Colors

Most enclosures in this brochure are shown in our popular standard light bronze finish.

White, Black or any RAL color are available to special order.

See the color section in the

Cyclone Configurator  
on the next page.

## Available Options

<b>55.UR.xxx</b>	Unistrut Rail Kit (Use the 3-digit enclosure model #, eg 55.UR.200)
<b>51.SK</b>	Stacking Kit
<b>51.SS.xxxx</b>	Swivel Stacking Kit (xxx = Cyclone model #)
<b>55.C2</b>	Cyclovator 2 (requires 55.UR.xxx)
<b>55.AM2</b>	Angle Mount Kit, Cyclone 210-305
<b>55.AM3</b>	Angle Mount Kit, Cyclone 310, 314, 324
<b>55.AM4</b>	Angle Mount Kit, Cyclone 320, 525
<b>55.TI.xxxx</b>	Thermal Insulation Kit (factory fitted)
<b>55.SH.xxxx</b>	Sun Shade (xxx = Cyclone model #)

<b>55.IC.15</b>	Cyclone Inlet Cowl for Cyclone 55.2-3xx
<b>55.IC.22</b>	Cyclone Inlet Cowl for Cyclone 55.400 and up
<b>55.DFB.15</b>	Cyclone Desert Baffle for Cyclone 55.2-3xx
<b>51.EN</b>	Ethernet Bridge (for system monitoring)
<b>51.TSM.xx</b>	Tempest System Manager
<b>51.HF.15</b>	Spare Inlet Filter Cyclone 55.2-3xx
<b>51.HF.22</b>	Spare Inlet Filter Cyclone 55.400 and up
<b>55.PP</b>	Positive Pressure Option
<b>55.WW</b>	Cyclone Windshield Wiper Kit

For custom options please consult factory

CAD drawings and user manuals at [www.tempest.biz](http://www.tempest.biz)

## Cyclone Configurator

Please complete this form for each Cyclone type required and email to us at [info@tempest.biz](mailto:info@tempest.biz)

Name *			
Company *			
Email *			
Phone			
Project Name & Location *			
Projector & Lens Make/Model #	Projector: *	Lens: *	
Cyclone Model *	55.	Quantity	
Destination Country *			
Expected Install Date *			
Enclosure Type *	Landscape	Portrait	UST
Projector Slide *			
Projector Mount *	Landscape/UST: Feet Down    Feet Up Portrait: Feet Left    Feet Right		
Supply Voltage *			
<b>Options</b>			
Thermal Insulation	Qty	No	
Inlet Cowl	Qty	No	
Desert Filter Baffle	Qty	No	
Positive Pressure	Qty	No	
Sun Shade	Qty	No	
Cyclovator	Qty	No	
Angle Mount Kit	Qty	No	
Stacking Kit	Qty	No	
Swivel Stacking Kit	Qty	No	
Unistrut Kit	Qty	Mounting	No
Ethernet Comms	Qty	Type	No
Windshield Wiper	Qty	No	
Spare Inlet Filter	Qty	No	

Projector Power Outlet (all types include IEC 60320 C13 Aux Power):

Select Type:

Custom:

Color, standard	Light Bronze	Black	White
Color, custom <small>Gloss levels higher than 30% may show up weld marks. Tempest accepts no responsibility in this event.</small>	Custom, RAL #		
	Gloss Level	%	
	Salt Fog Primer:	Yes	No

### UST Lens Configuration:



### Custom Requests:

Factory Use Only:	SO #:	Date:
Electrical:	IEC	NEMA    Wiring p:
Test:	Function	Projector
Hardware Kit:		



\* Left Slide Shown here

User manuals and  
CAD drawings at  
[www.tempest.biz](http://www.tempest.biz)