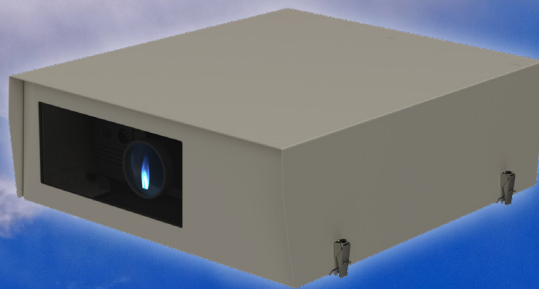




TEMPEST

Breeze^{PU}

Outdoor Projector
Enclosures for
Epson EB-PU
Series Projectors



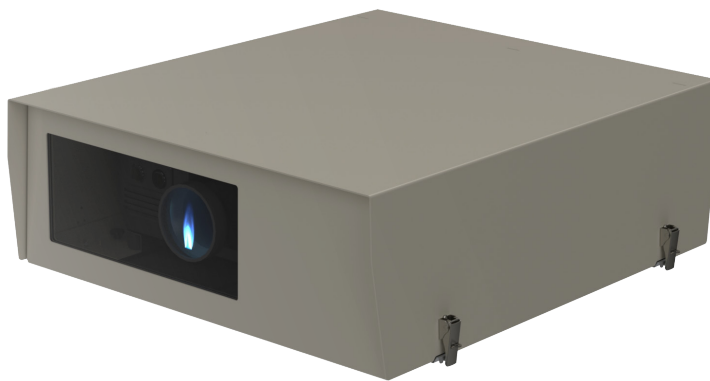
Breeze^{PU}

Outdoor Projector Enclosures for Epson PU Series Projectors

Tempest, undisputed world leader in projector enclosure technology, introduces Breeze^{PU}, a family of outdoor enclosures specifically tailored to Epson's PU Series projectors, from 6,000 to 20,000 lumens.

You asked us for a simple solution, to bring outdoor operation within the budget of more of your projects in moderate climates, but without sacrificing Tempest quality or reliability — and Breeze^{PU} is our answer!

- Simple, elegant aluminum enclosures for moderate climates.
- Optical grade tempered port glass, wide enough for Epson camera operation
- Custom internal baffles direct exhaust air from the projector side exhaust to the enclosure fan
- Forced-air ventilation runs when the projector lamp is on, or when the temperature inside the enclosure exceeds 35°C
- Operation is completely automatic
- Electrostatic dust filter can be removed and washed when needed
- Thermal barrier inside cover for daytime protection under hot sun
- Simple rigging via 4 M8 screws
- Stainless steel latches with padlock rings
- Hanging Adapter Kit included
- Single or split feed wiring
- Attractive light bronze powder coat finish



Breeze 58.PU.22, for Epson EB-PU21xx/22xx projectors up to 20k lumens

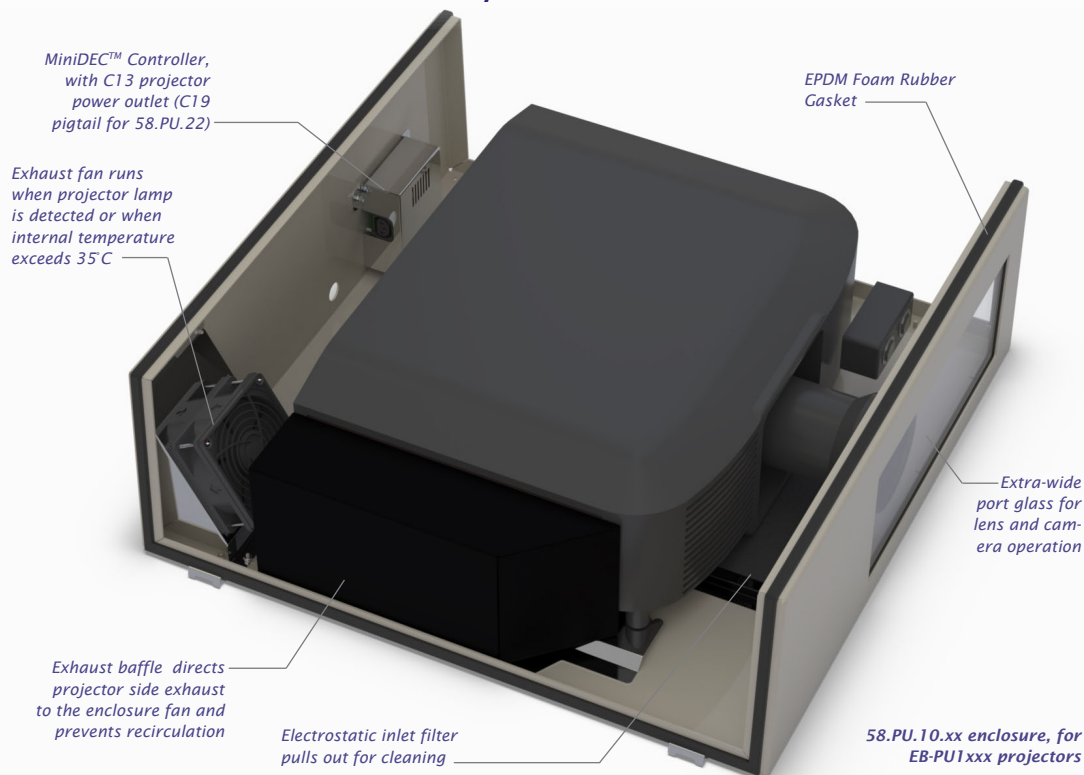
Breeze^{PU} models come in versions for North America/Japan and International markets.

Operating Temperature Range

Breeze^{PU} may be used safely in locations with temperatures in the range 0-40°C [32-104°F].

The enclosure exhaust fan runs any time the projector is out of standby. In daytime, the enclosure fan will run automatically if the internal temperature exceeds 35°C.

Breeze^{PU} — the Inside Story



Breeze^{PU}

Outdoor Projector Enclosures for Epson PU Series Projectors

Installation

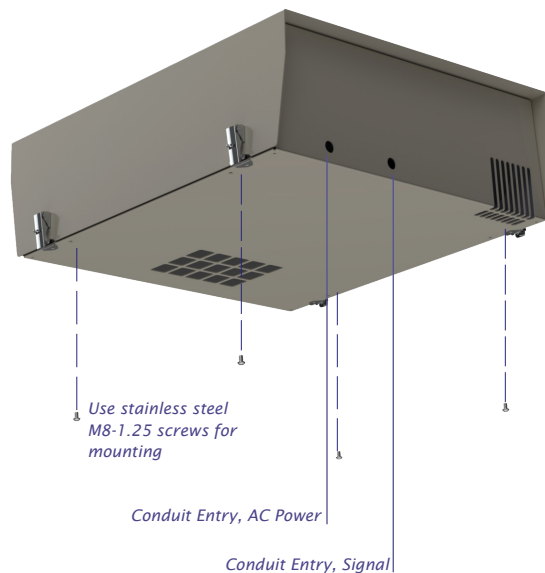
Standard Installation

Simply bolt your Breeze^{PU} enclosure atop any suitable structure or frame, using the four M8-1.25 threaded holes in the enclosure base.

Wiring Access

Use outdoor-rated flexible conduit or flex cable and outdoor-rated cable glands to connect power and signal cables to the back of the enclosure.

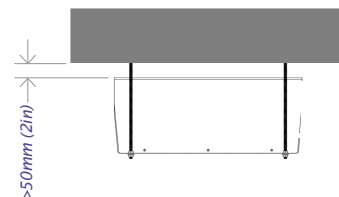
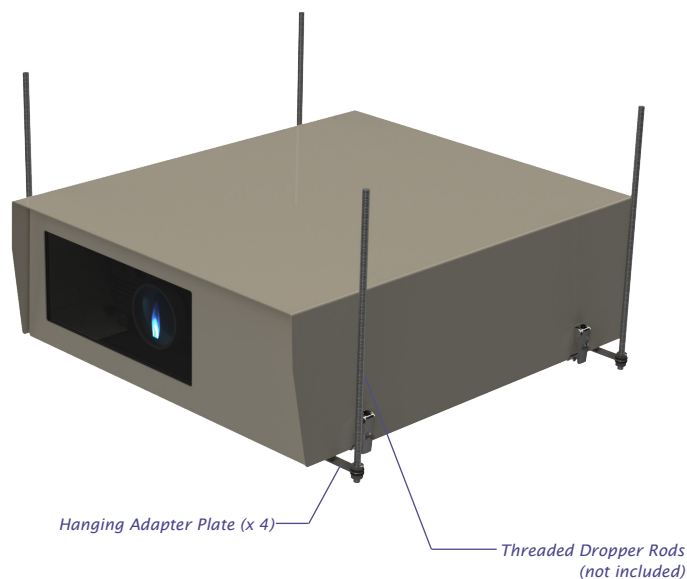
Conduit holes are 22mm [0.875in].



Hanging Installation

Use the four hanging adapter plates provided with threaded dropper rods (up to M12/½"), to hang Breeze^{PU} from any suitable frame or structure.

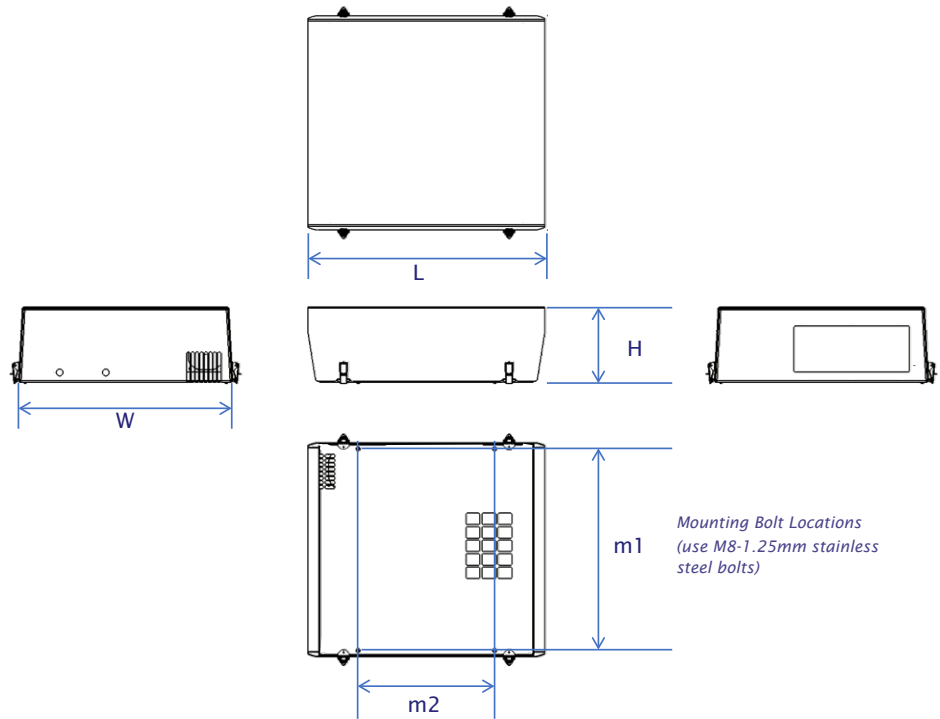
Be sure to leave some clearance above the enclosure (minimum 50mm/2in) to remove and replace the cover. Cover may be removed by releasing latches and sliding to the front or back.



When installed hanging, the cover is removed by lifting slightly and sliding to front or back. Allow at least 50mm (2in) between enclosure top and any overhang.

Breeze^{PU}

Outdoor Projector
Enclosures for
Epson PU Series
Projectors



Dimensions

Model	Length	Width	Height	m1	Mounting Bolts	m2	Weight
58.PU.10.xx	781 [30.75in]	763 [30in]	247 [9.75in]	665 [26.18in]	450 [17.7in]		20.5kg [45lb]
58.PU.22.xx	883 [34.75in]	817 [32in]	279 [11.0in]	715 [28.15in]	700 [27.6in]		27.0kg [60lb]

Ordering Information

Model	International	Model	North America	Projector Models:
58.PU.10.IN	230V, 50/60Hz	58.PU.10.US	100-120V, 50/60Hz	EB-PU:1006, 1007, 1008, 2010
58.PU.22.IN	230V, 50/60Hz	58.PU.22.US	200-208V, 50/60Hz	EB-PU:2113, 2116, 2120, 2213, 2216, 2220

All sales are subject to Tempest Lighting, Inc. Standard Terms and Conditions, available for download at www.tempest.biz.

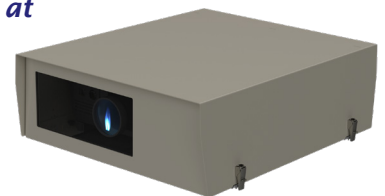
All Schedule B Export Code: 9405.99.0000

IMPORTANT:

Tempest Breeze^{PU} enclosures are strictly intended for use in landscape format, outdoors, in moderate climates.

For portrait, UST, custom, indoor applications and more challenging outdoor climates, go to tempest.biz and look at our other projector enclosure product families.

Download CAD drawings
and user manuals at
www.tempest.biz



Replacement Filter Part Numbers	
Model	Inlet Filter
58.PU.10.xx	58.03.050
58.PU.22.xx	58.03.100

Made in the USA

©Tempest Lighting, Inc., August, 2022

In the interest of continuous product improvement, specifications are subject to change without notice



Tempest Lighting, Inc.,

11845 Wicks Street, Sun Valley, CA 91352, USA

www.tempest.biz info@tempest.biz

t: +1 818 787 8984 f: +1 818 252 7101