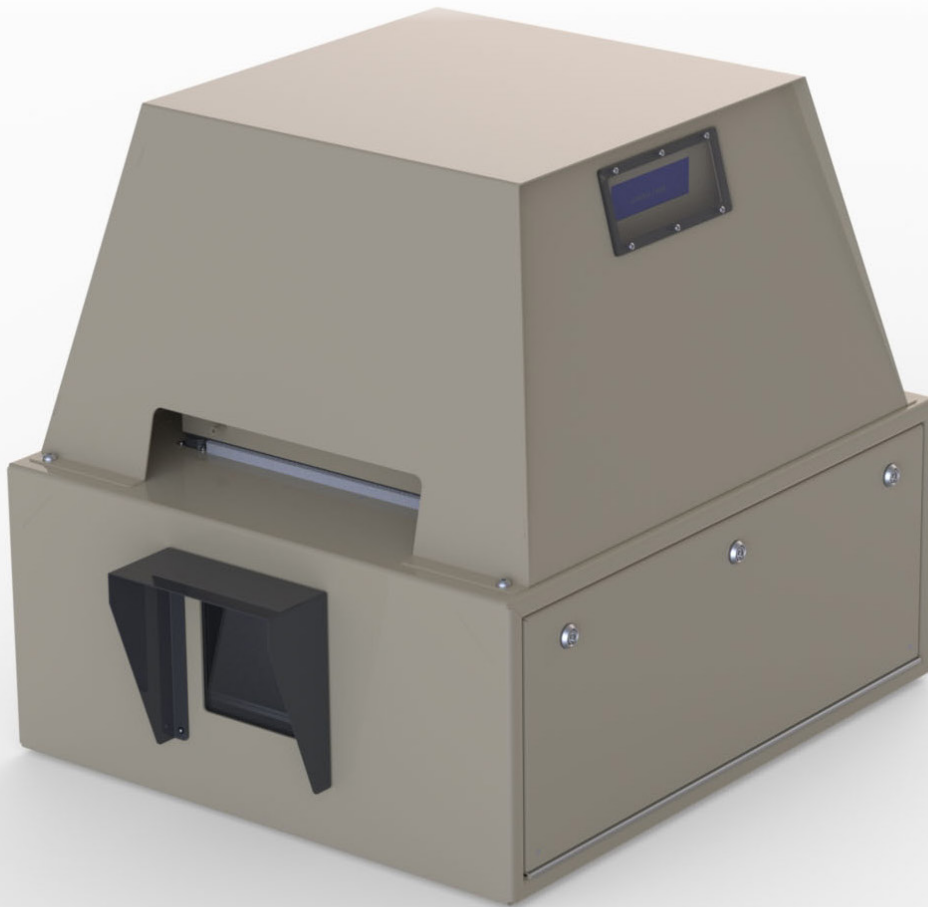


BlizzardCool™



BlizzardCool 100

Models are available for any projector up to 15,000 ANSI lumens, and most lasers up to 5,000 btu(power draw)

Now you can run small and midsize projectors and lasers cool in even the most extreme outdoor temperatures. BlizzardCool adds active cooling to Tempest's popular Blizzard enclosures, delivering consistent operating temperatures for even the most sensitive laser projectors, in the hottest parts of the world.

Tempest Cyclone and Blizzard enclosures have been protecting sensitive equipment for years, in the most extreme climates, and in most cases the standard enclosure does a fine job. But there are times — and places — where the only way to keep a projector within its operating limits is to cool the air it breathes. The new generation of laser projectors may also need lower ambient temperatures to achieve maximum life and/or brightness.

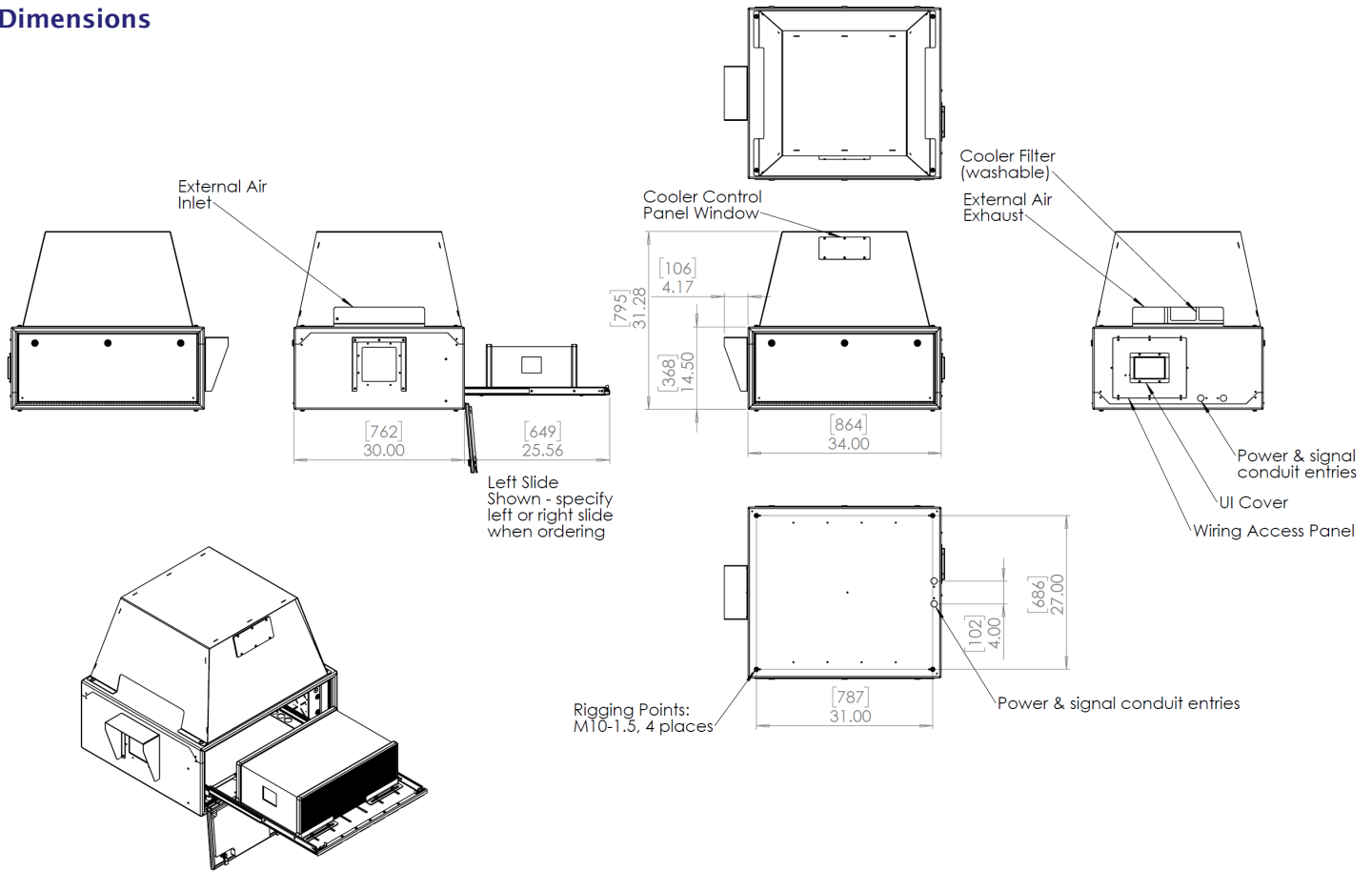
The active cooling unit piggybacks on any landscape Blizzard projector or laser enclosure, with vibration isolating mounts to eliminate risk of beam wobble!

Just set the desired operating temperature on the cooler control panel, and Blizzard's controller takes care of the rest, ensuring consistent internal temperature management both at showtime and during those hot summer days...

Ordering Guide

Part #	Supply Voltage	Description
52.100.LS.CP.IN	200-240VAC, 50Hz	Landscape Projector Enclosure, 10-12,000 ANSI
52.100.LS.CP.US	100-120VAC, 60Hz	Landscape Projector Enclosure, 10-12,000 ANSI
52.100.LS.CL.IN	200-240VAC, 50Hz	Landscape Laser Enclosure, up to 1,000W power
52.100.LS.CL.US	100-120VAC, 60Hz	Landscape Laser Enclosure, up to 1,000W power
52.150.LS.CP.IN	200-240VAC, 50Hz	Landscape Projector Enclosure, 15,000 ANSI
52.150.LS.CP.US	100-120VAC, 60Hz	Landscape Projector Enclosure, 15,000 ANSI
52.150.LS.CL.IN	200-240VAC, 50Hz	Landscape Laser Enclosure, up to 1,250W power
52.150.LS.CL.US	100-120VAC, 60Hz	Landscape Laser Enclosure, up to 1,250W power

Dimensions



Specification

(for general enclosure specs see Blizzard brochure)

Cooling Capacity:	Up to 6,000btu/hr*
Refrigerant:	R-410A
Electrical:	
xxxxx.IN	200-250VAC 1,500W 50Hz
xxxxx.US	100-125VAC 1,500W 60Hz

Made in the USA

©Tempest Lighting, Inc., January 2021

In the interest of continuous product improvement, specifications are subject to change without notice

Compliance: ETL, CE



Tempest Lighting, Inc

11845 Wicks Street, Sun Valley, CA 91352, USA

www.tempest.biz info@tempest.biz

t: +1 818 787 8984 f: +1 818 982 5510