



# Tempest Projector Enclosures

**Product Overview**

*August, 2020*



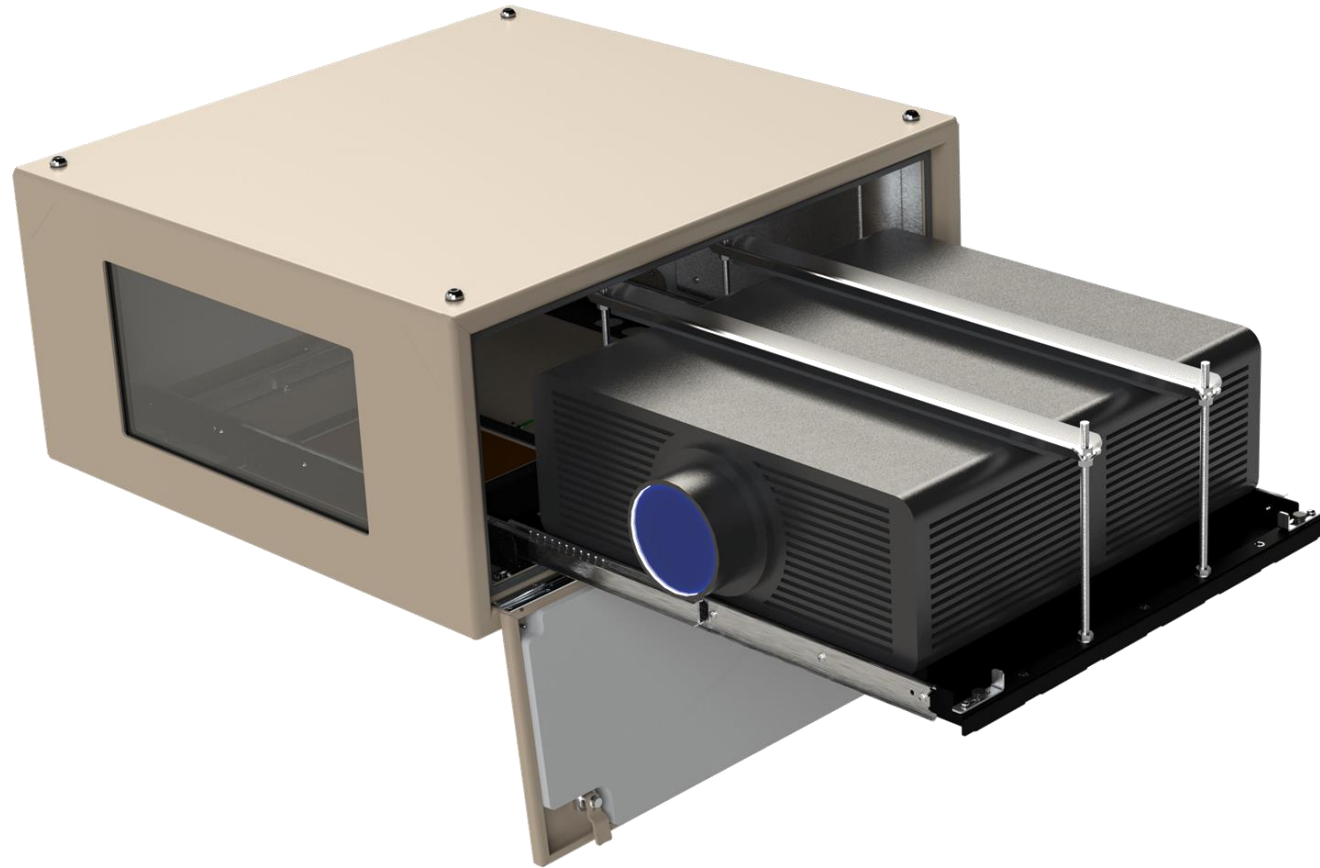
# Outdoor Projector Enclosures

- Environmental
  - Weather Protection: -25 to +40°
  - Rain @ 45 degrees
  - Ice
  - Salt Air (beach resorts, cruise ships)
  - Windblown Dust
  - Humidity (up to 95%)
  - Typical IP54 (NEMA 3R)
- Options
  - ActiveCool™ (IP67) and AC Assist cooling
  - Thermal Insulation (hot and cold climates)
  - Positive Pressure (salt, other contaminants)
  - Remote monitoring (RS485 or Ethernet)
  - Cyclovator Tilt Kit
  - Many Rigging Options
  - Many Custom Options



OUTDOOR





## Blizzard

### Outdoor Projector Enclosures

- 4 Sizes – 5–15,000 lumen projectors
- 3 Formats:
  - Landscape
  - Portrait
  - Ultra-Short-Throw
- Projector Mount: Fixed or Slide
- Salt Fog Filtering
- Ethernet or RS485 Monitoring
- Many Rigging Accessories

## Blizzard Rigging Options

*Any  
Projector.  
Anywhere.  
Anyhow!*



*Drop Arms*



*Vertical Pole  
Mount (.050 &  
.100 Models)*



*Horizontal  
Pole/Truss  
Mount*



*Stacking Kit*



*Cyclovator*



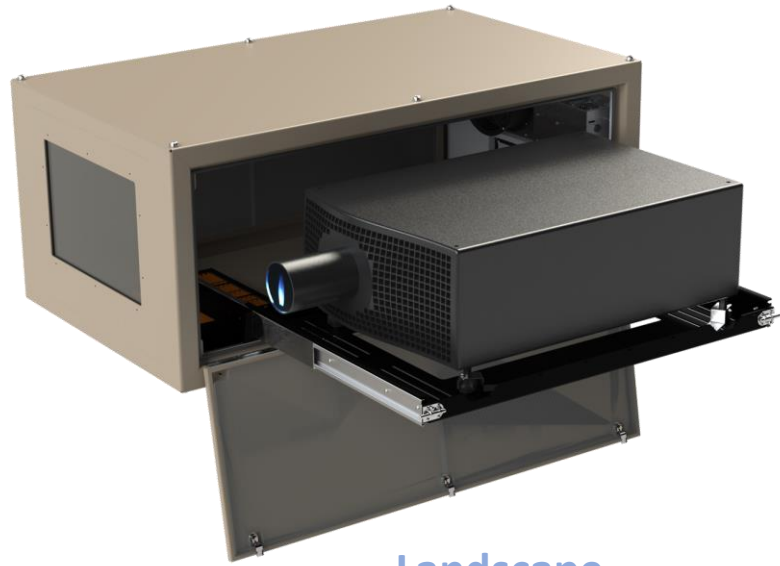
# Blizzard

## Outdoor Projector Enclosures

- 4 Sizes – 5–15,000 lumen projectors
- 3 Formats:
  - Landscape
  - Portrait
  - Ultra-Short-Throw
- Projector Mount: Fixed or Slide
- Salt Fog Filtering
- Ethernet or RS485 Monitoring
- Many Rigging Accessories

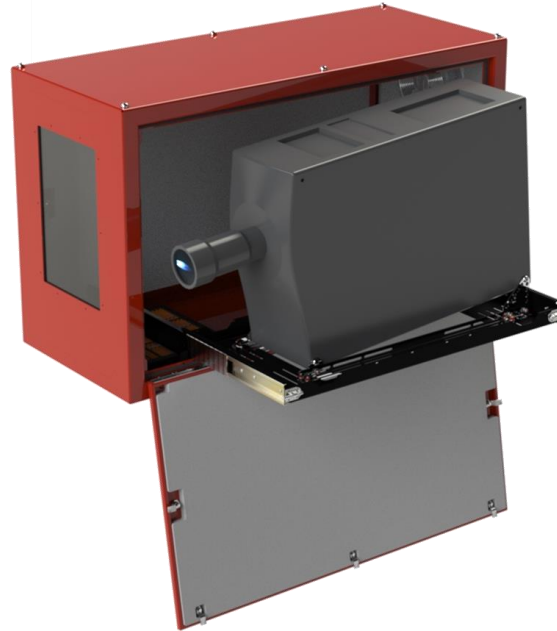
OUTDOOR





Landscape

Portrait



Any UST Format



# Cyclone

## Outdoor Projector Enclosures

- Projector-specific, up to 50,000 lumens
- Landscape, Portrait, UST
- Left or Right Projector Slide
- Salt Fog Filtering
- Ethernet or RS485 Monitoring
- Many Custom Options

## ActiveCool™

- Sealed active cooling system for large projectors
- Constant temperature for constant color balance
- Optimum operating temperature in any climate



## AC Assist

- Outdoor-rated spot cooler
- Up to four enclosures – Cyclone or Blizzard
- Reduces ambient temperature by up to 12°C



# TEMPEST



## Cyclovator

- Tilt up or down up to 60°
- Positive lock at show angle
- Return to horizontal for safe service access
- Works with any Cyclone or Blizzard enclosure



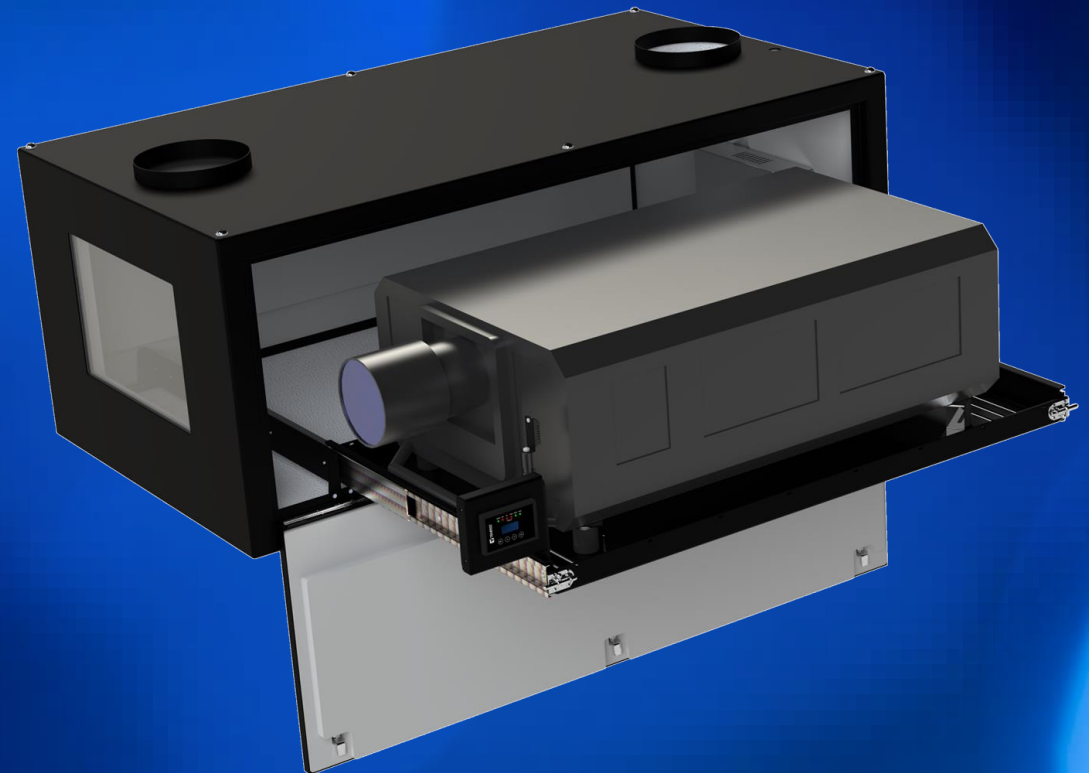
## Cyclone

### Outdoor Projector Enclosures

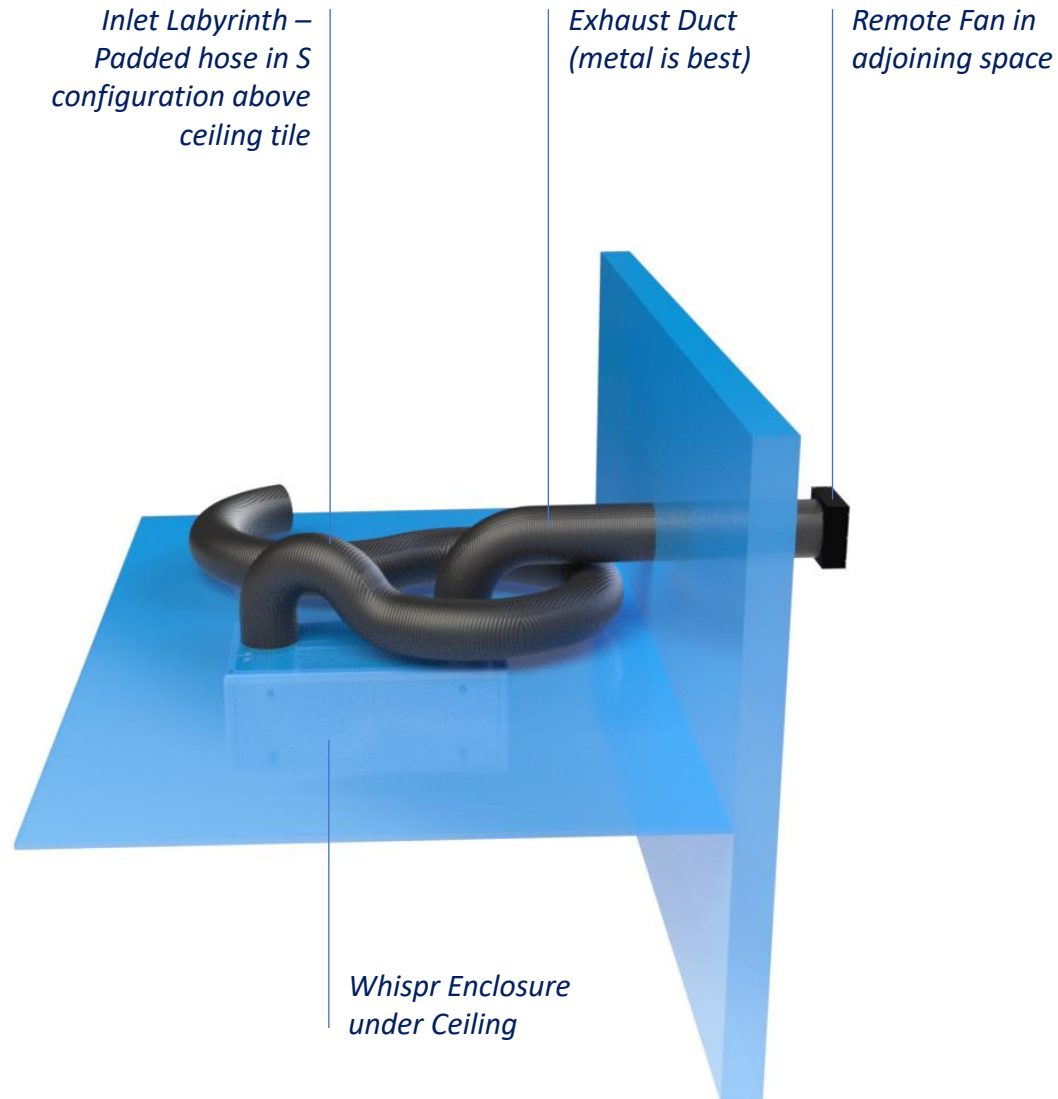
- Projector-specific, up to 50,000 lumens
- Landscape, Portrait, UST
- Left or Right Projector Slide
- Salt Fog Filtering
- Ethernet or RS485 Monitoring
- Many Custom Options

# Indoor Projector Enclosures

- Noise Attenuation
  - With Remote Fans (Tacit, Whispr)
    - Typical 25dBA Attenuation
    - Up to 30dBA Attenuation
  - All-in-One (Zen)
    - Typical 22dBA Attenuation
    - Up to 25dBA Attenuation
- Environmental
  - Dust Filtering
  - Optional - Oil Filtering (theme parks, shows)
- Options
  - Remote Monitoring (Tacit, Zen)
  - Portrait, UST (Tacit, Whispr)
  - Custom Options



## Whispr – Typical Installation



## Whispr

### Projector Hush Enclosures

- 4 Sizes – 5–15,000 lumen projectors
- 3 Formats:
  - Landscape
  - Portrait
  - Ultra-Short-Throw
- 25-28dBA Attenuation
- Remote Fans for best acoustics
- Live Theatre, Education, Meeting Rooms



*New, high-performance  
3-speed remote blower*

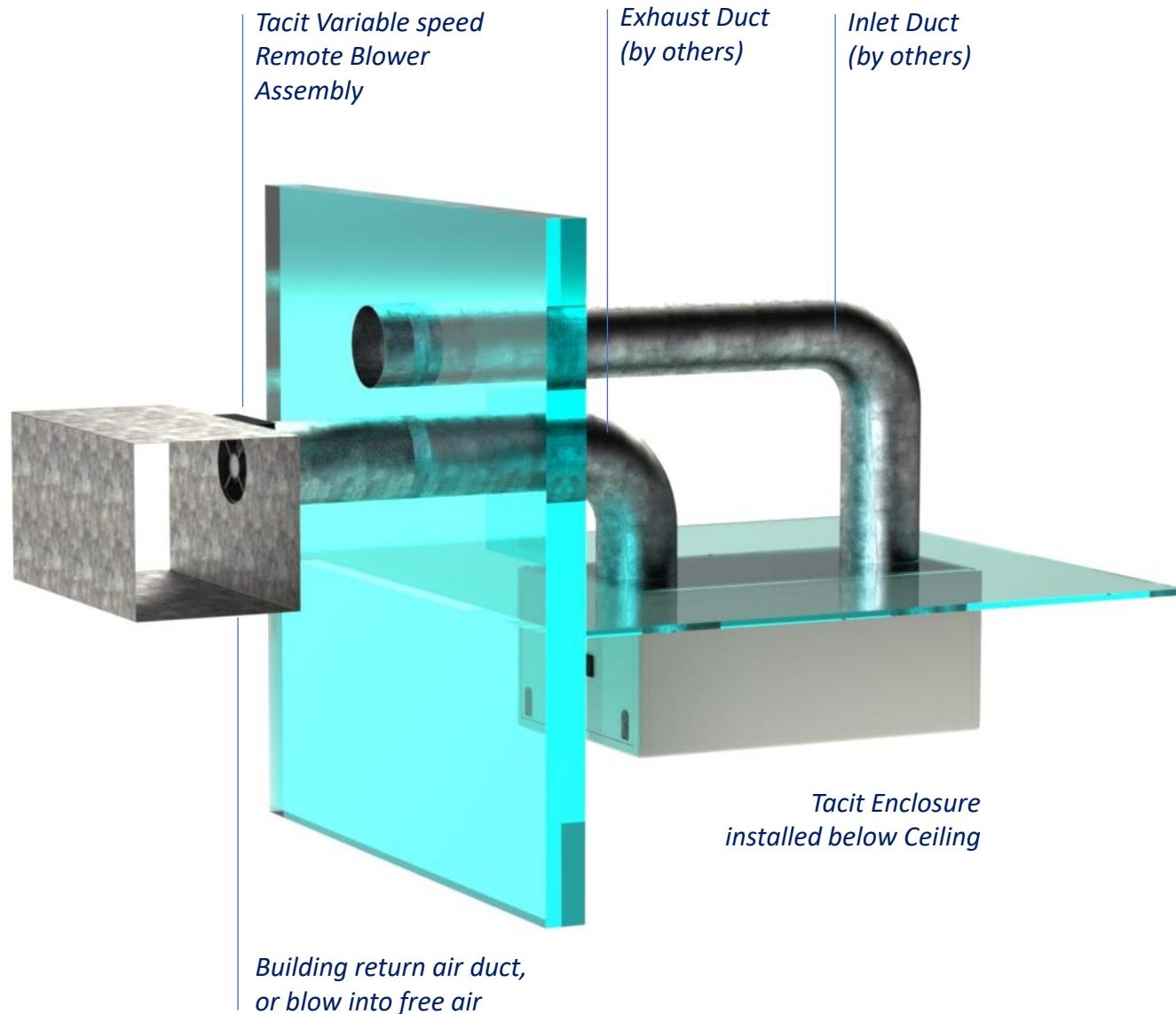


## Whispr

### Projector Hush Enclosures

- 4 Sizes – 5–15,000 lumen projectors
- 3 Formats:
  - Landscape
  - Portrait
  - Ultra-Short-Throw
- Up to 28dBA Attenuation
- Simple thermostat control
- Remote Fans for best acoustics
- Live Theatre, Education, Meeting Rooms

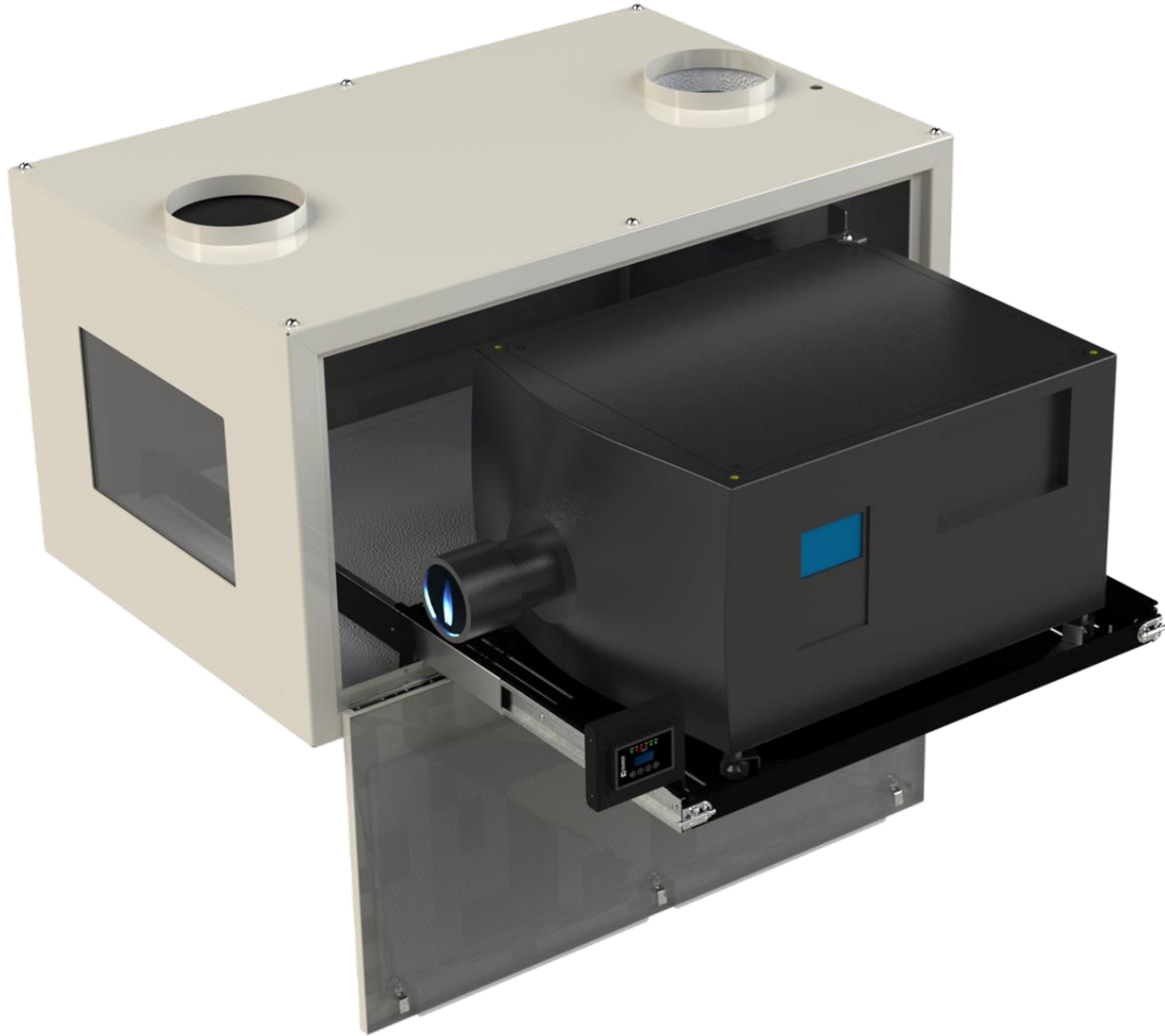
## Tacit – Typical Installation



# Tacit

## Projector Hush Enclosures

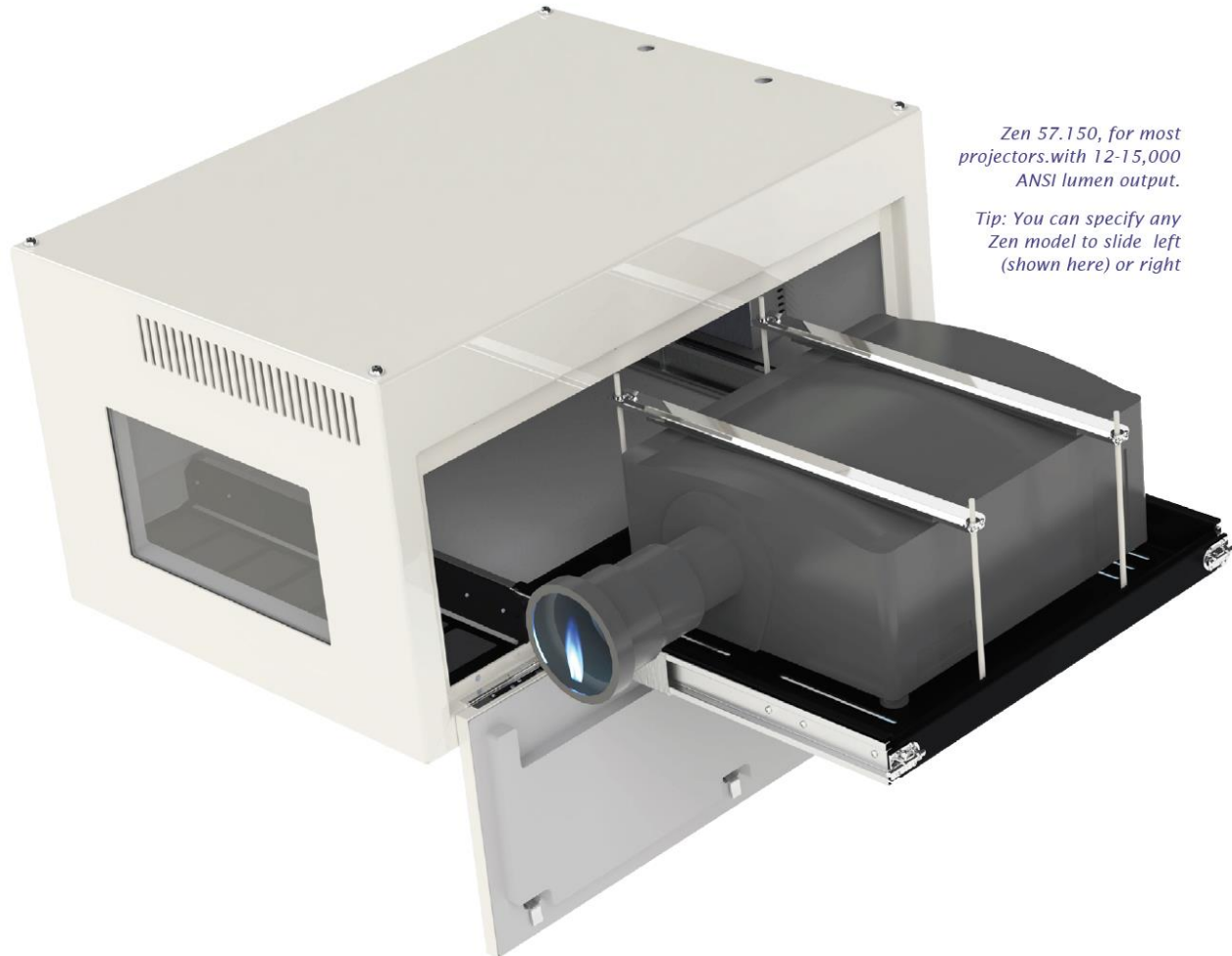
- Projector-Specific, up to 50k lumens
- Landscape or Portrait
- Up to 30dBA attenuation
- Variable speed Remote Exhaust for best acoustics
- Live Theatre, Education, Meeting Rooms, Theme Park Rides



## Tacit

### Projector Hush Enclosures

- NEW – Tacit 050-150, for any projector 5-15k lumens
- Projector-Specific, 20-50k lumens
- Landscape, Portrait, UST, Custom
- Up to 30dBA attenuation
- Remote Fans for best acoustics
- Live Theatre, Education, Meeting Rooms, Theme Park Rides



*Zen 57.150, for most projectors with 12-15,000 ANSI lumen output.*

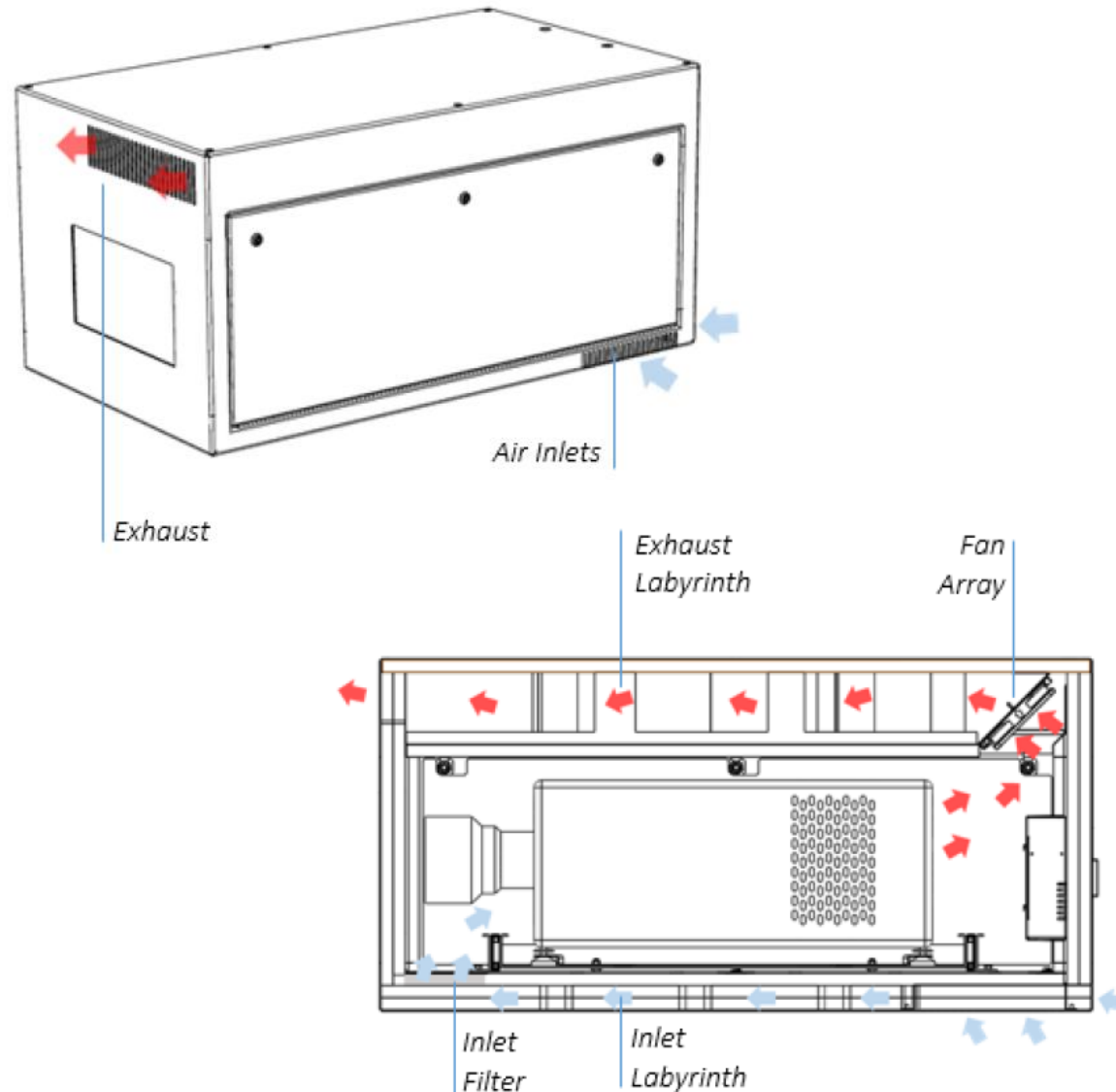
*Tip: You can specify any Zen model to slide left (shown here) or right*

## Zen

### Projector Hush Enclosures

- Landscape Only
- 5 - 40k Lumens
- Up to 25dBA attenuation
- All-in-one - no ductwork
- Variable speed integral cooling fans
- Live Theatre, Concert Halls, Museums

Integral Cooling – no ductwork.  
Ideal for Historic buildings



## Zen

### Projector Hush Enclosures

- Landscape Only
- 5 - 40k Lumens
- Up to 25dBA attenuation
- All-in-one - no ductwork
- Variable speed integral cooling fans
- Live Theatre, Concert Halls, Museums



# Typhoon Rental Enclosures

- Environmental
  - Weather Protection: -25 to +40°
  - Rain @ 45 degrees
  - Ice
  - Salt Air (beach resorts, cruise ships)
  - Oil Fog
  - Windblown Dust
  - Humidity (up to 95%)
  - Typical IP54 (NEMA 3R)
- Options
  - Fully customizable connector panel
  - Remote monitoring (RS485 or Ethernet)
  - Many Rigging Options
  - Many Custom Options

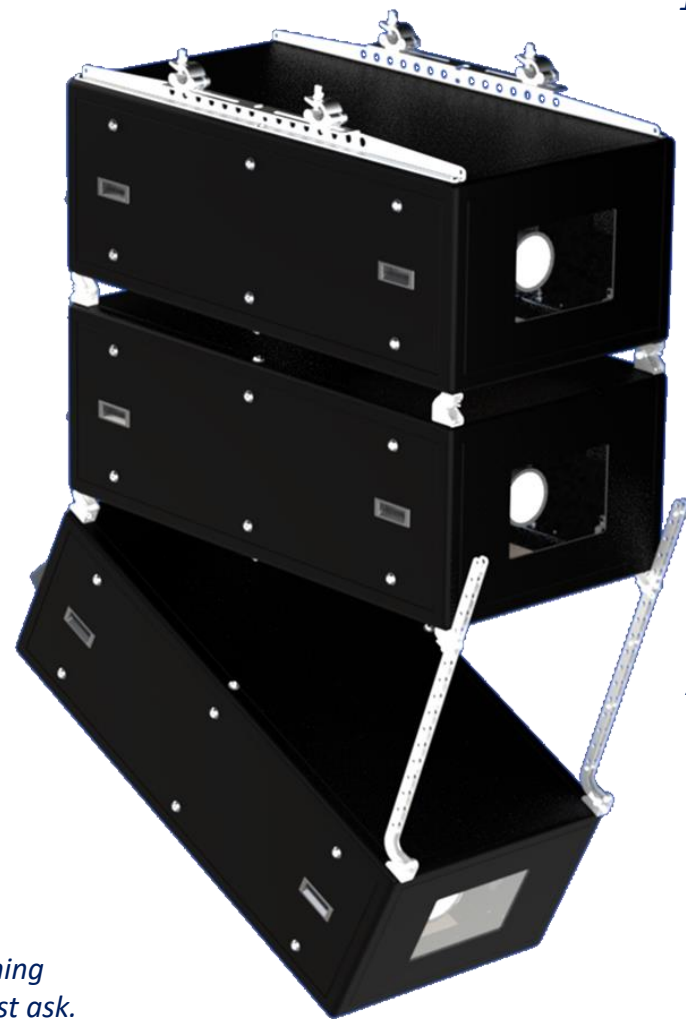


## Typhoon Rigging Options



*Truss Adapters –  
12-24" Truss*

*Quick-Install  
Stacking Kit*



*Adjustable  
Drop Arms*

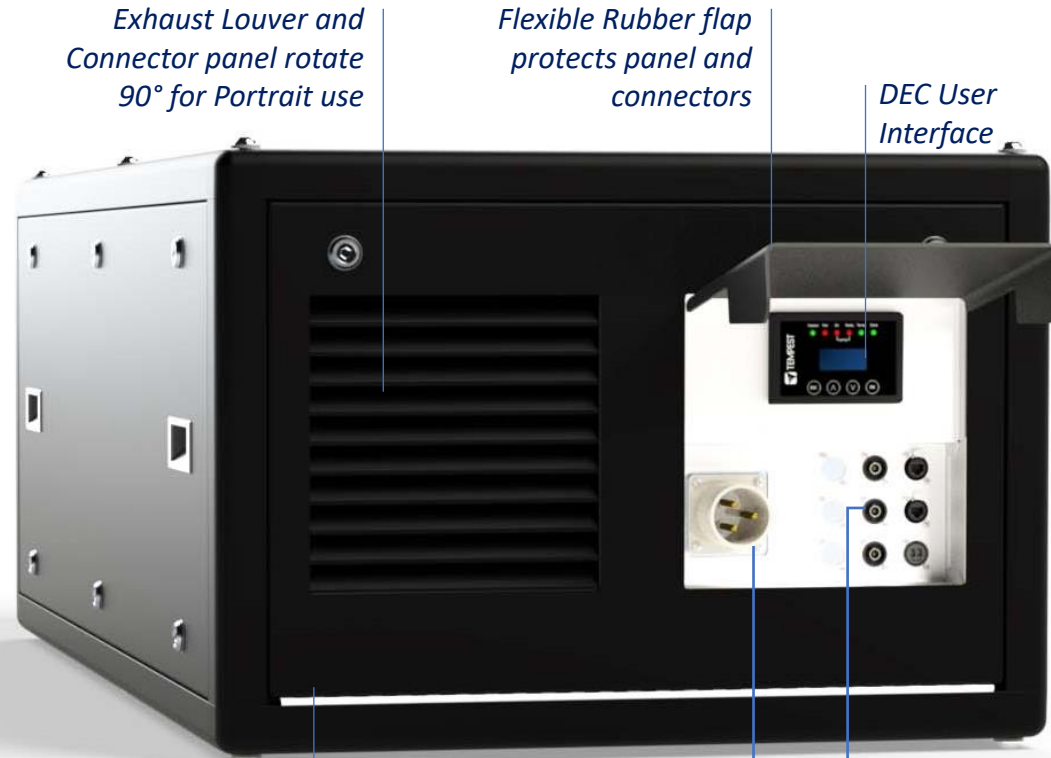
*Need something  
Different? Just ask.*

# Typhoon

## Rental & Staging Projector Enclosures

- Versions for all popular 15-30K Projectors
- Any Orientation
- Many Rigging Options
- Front or Back Projector Slide
- Salt Fog/Oil Filtering
- Ethernet or RS485 Monitoring
- Custom Connector panel to suit rental cabling

## Typhoon Custom Connector Panel



*Exhaust Louver and Connector panel rotate 90° for Portrait use*

*Flexible Rubber flap protects panel and connectors*

*DEC User Interface*

*Back Door opens for lamp access*

*Power Inlet Options:  
NEMA 20A/30A  
IEC309 16A/32A  
IEC C19  
IEC320 C14 Aux Power*

*Signal Connectors:  
Up to 9 Neutrik pass-throughs:*

- Ethercon
- OpticalCon
- BNC
- HDMI
- XLR
- Up to 2 DVI

# Typhoon

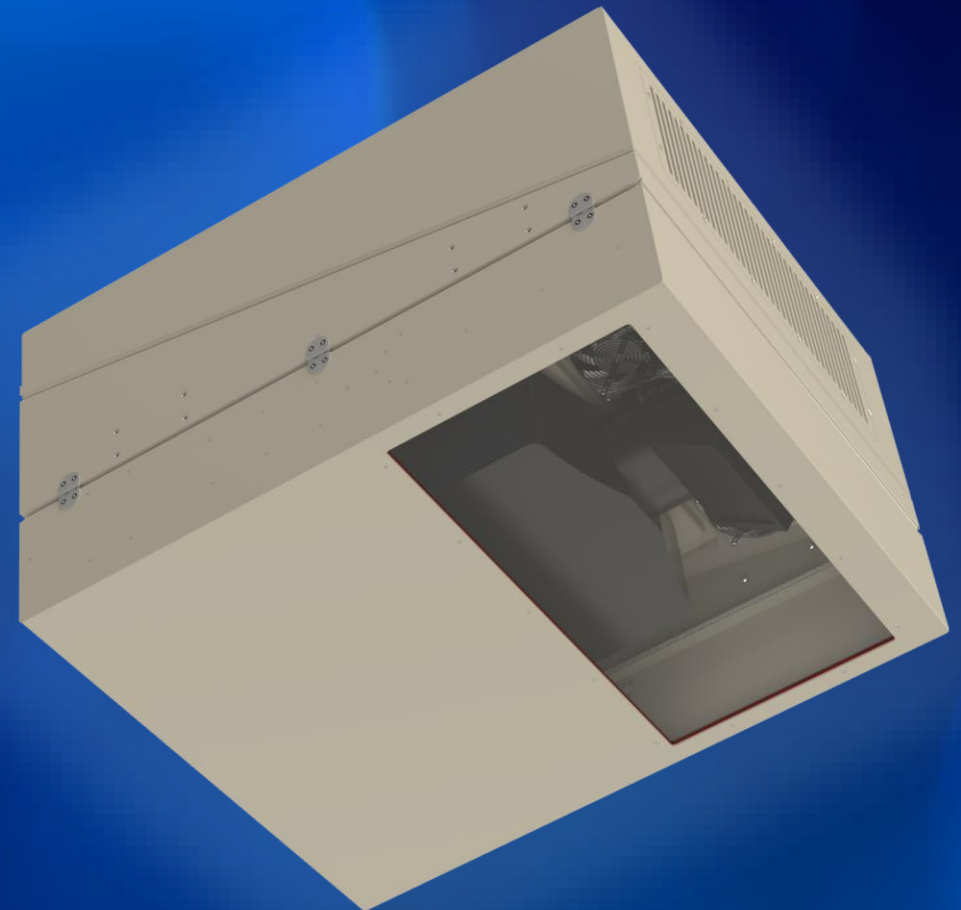
## Rental & Staging Projector Enclosures

- Versions for all popular 15-30K Projectors
- Any Orientation
- Many Rigging Options
- Front or Back Projector Slide
- Salt Fog/Oil Filtering
- Ethernet or RS485 Monitoring
- Custom Connector panel to suit rental cabling

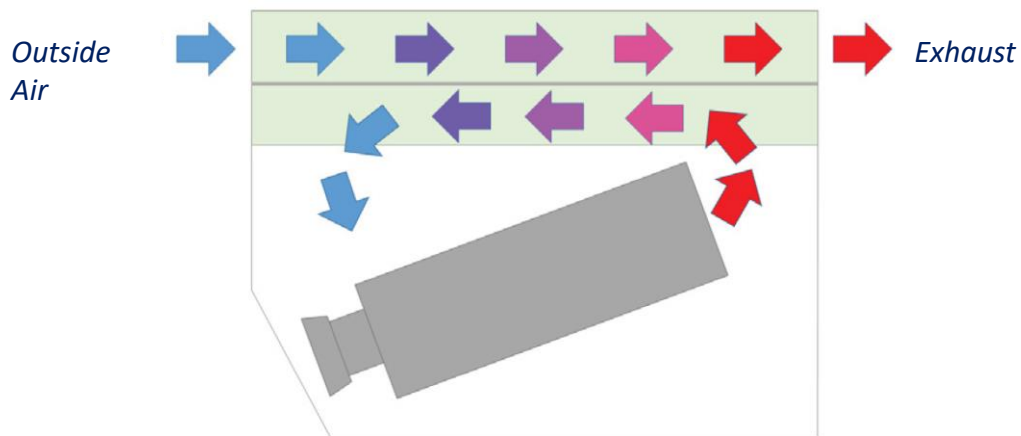
# Metro Fire-Safe Enclosures

- Applications
  - Subway systems – Advertising
  - Underground Public Spaces
- Environmental
  - 1-hour Fire rating
  - Sealed Counterflow Heat-exchanger
- Options
  - Landscape or UST
  - Any projector
  - Remote monitoring (RS485 or Ethernet)
  - Many Custom Options

*Metro enclosures are typically custom-designed for each application project.*

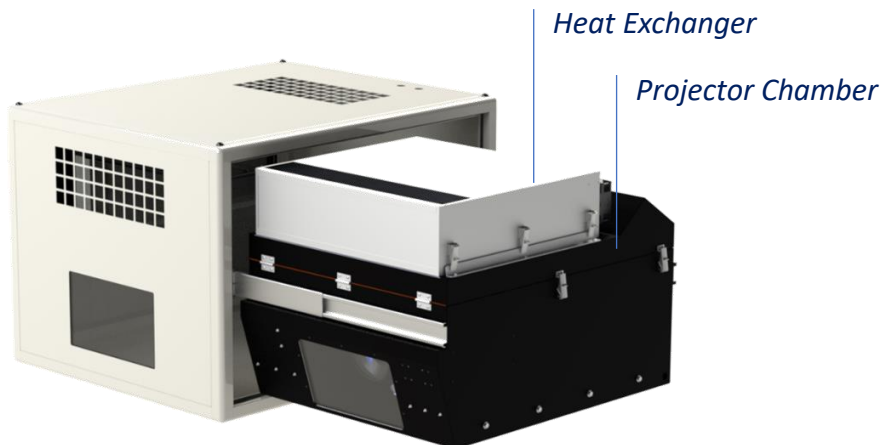


## Metro – Sealed Cooling for Safety-Critical Environments



*IP65 Projector Chamber:  
projector exhaust air  
continuously cooled and  
recirculated.*

***Better than 5°ΔT***

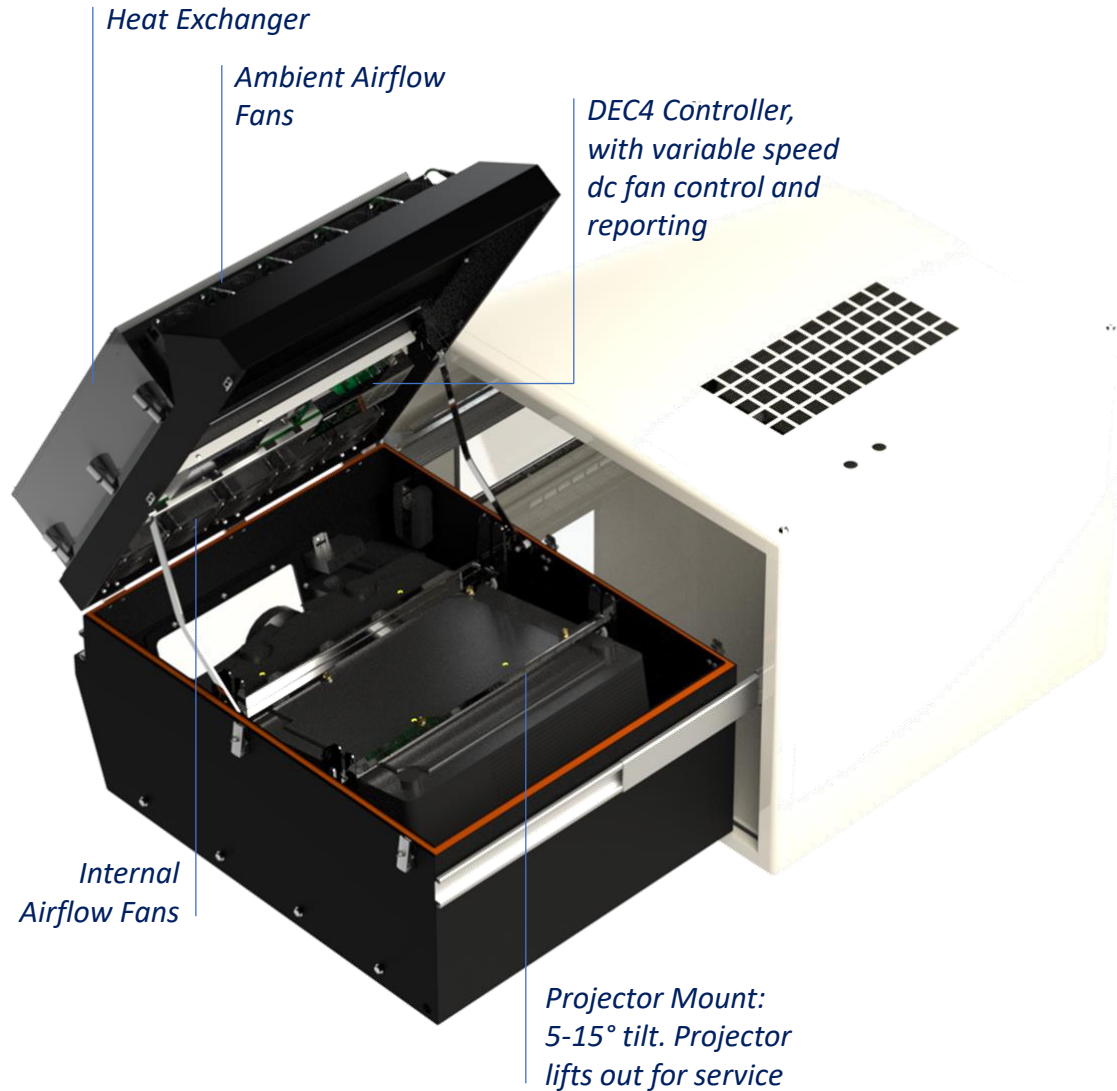


## Metro

For Safety-Critical Public Spaces

- Subway Systems
- Underground Public Spaces
- Sealed Cooling
- 1-hour Fire Rating
- Counterflow Heat-exchanger Technology
- Custom – for larger systems

*Metro Enclosures may be customized for any projector up to 25K lumens, and to meet regulatory requirements in various jurisdictions*



## Metro

For Safety-Critical Public Spaces

- Subway Systems
- Underground Public Spaces
- Sealed Cooling
- 1-hour Fire Rating
- Counterflow Heat-exchanger Technology
- Custom – for larger systems

# Tempest International Contacts

- Los Angeles Factory

- [info@tempest.biz](mailto:info@tempest.biz)
- +1 818 787 8984

- Europe Sales

- [info@tempest.biz](mailto:info@tempest.biz)
- +44 7867 536 522

## Sales & Service Partners

- France

- [contact@axente.fr](mailto:contact@axente.fr)
- +33 1 69 10 50 70

- Japan

- [tsj@tkb.att.ne.jp](mailto:tsj@tkb.att.ne.jp)
- +81 3 3425 2400

- Singapore

- [adrian@hexogonsol.com](mailto:adrian@hexogonsol.com)
- +65 6447 9904

- [www.tempest.biz](http://www.tempest.biz)

- Product Info
- Installations
- Manuals
- CAD Drawings
- 3D CAD

