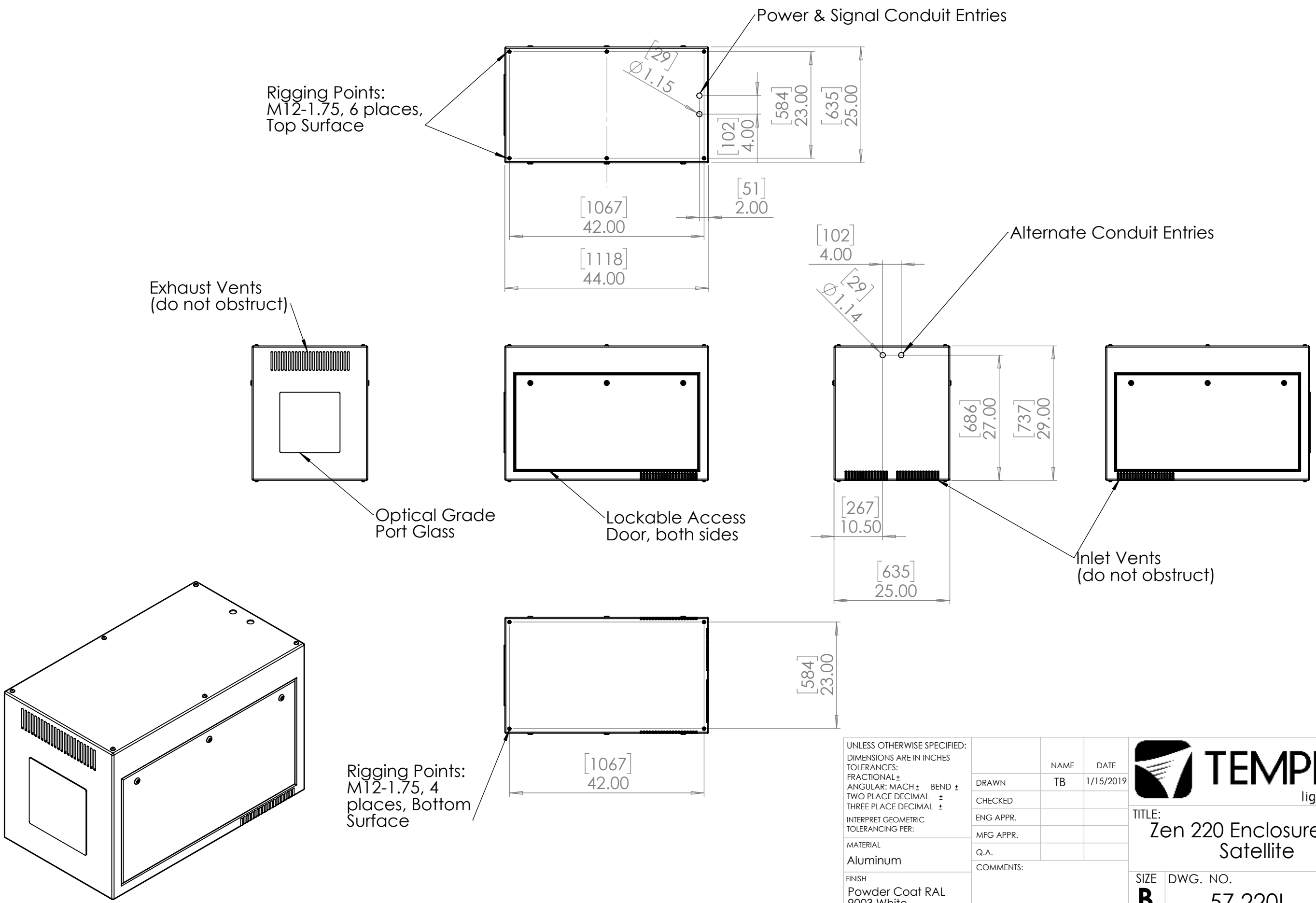


8 7 6 5 4 3 2 1

D
C
B
A

D
C
B
A



Rigging Points:
M12-1.75, 6 places,
Top Surface

Power & Signal Conduit Entries

Exhaust Vents
(do not obstruct)

Alternate Conduit Entries

Optical Grade
Port Glass


Lockable Access
Door, both sides

Inlet Vents
(do not obstruct)

Rigging Points:
M12-1.75, 4
places, Bottom
Surface

UNLESS OTHERWISE SPECIFIED:
DIMENSIONS ARE IN INCHES
TOLERANCES:
FRACTIONAL ±
ANGULAR: MACH ± BEND ±
TWO PLACE DECIMAL ±
THREE PLACE DECIMAL ±
INTERPRET GEOMETRIC
TOLERANCING PER:
MATERIAL
Aluminum
FINISH
Powder Coat RAL
9003 White
DO NOT SCALE DRAWING

	NAME	DATE
DRAWN	TB	1/15/2019
CHECKED		
ENG APPR.		
MFG APPR.		
Q.A.		
COMMENTS:		

		
		TITLE: Zen 220 Enclosure, DPI Satellite
SIZE B	DWG. NO. 57.220L	REV 01
SCALE: 1:20		SHEET 1 OF 1

8 7 6 5 4 3 2 1