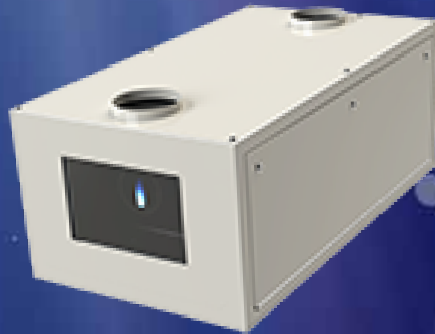




TEMPEST

**Tacit**  
**Hush**  
**Projector**  
**Enclosures**  
**20-45K**



# Tacit Hush Projector Enclosures

Tempest is the world's leading manufacturer of large format indoor projector enclosures for noise attenuation in presentation suites, digital cinema, live theatre and concert venues – any noise-sensitive indoor space. Tacit models are projector-specific for larger video projectors, and have been tested and approved for each of the projectors covered, up to 45,000 ANSI lumens.



Tacit uses a thermostatically controlled remote fan located in an adjacent space or insulated ceiling void to assure best-in-class noise attenuation. Tacit has a lightweight but extremely strong aluminum frame, with threaded holes at six points for easy installation.

Tacit offers excellent projector access, with full-length lockable side access doors, and a projector slide that may be ordered for right or left access on all landscape and portrait models.

Standard colors: White (RAL 9003 semi-gloss, black). Other colors to order.

Tacit is equipped with Tempest's patented DEC4 Control, featuring a comprehensive display and remote monitoring options.

Portrait and Ultra-Short-Throw versions are available to special order.

*Tacit 56.310 Landscape with a Christie Crimson projector*

*Tip: You can specify most Tacit models to slide left or right*

## Why so Quiet?

There are several parts to the puzzle:

- First, Tacit enclosures are airtight boxes with excellent seals, which do much of the work.
- Second, we line Tacit enclosures with two layers of high performance melamine sound insulation foam — rated incidentally to the highest fire safety standards.
- Third, we put the exhaust fan someplace else. As a rule of thumb, you need to blow through an enclosure about double the amount of air being handled by the projector itself.

That means forced cooling, and that means noise. The Tacit exhaust fan is located at the end of a duct (by others), which may be in an insulated ceiling space, an adjoining room or an outside wall.

The exhaust fan may also feed into the building air return, though we don't recommend feeding air to the enclosure inlets from the building air supply. It should be brought in at moderate temperature from a room or ceiling void.

This combination achieves excellent attenuation in the audience space, which is our sole aim.

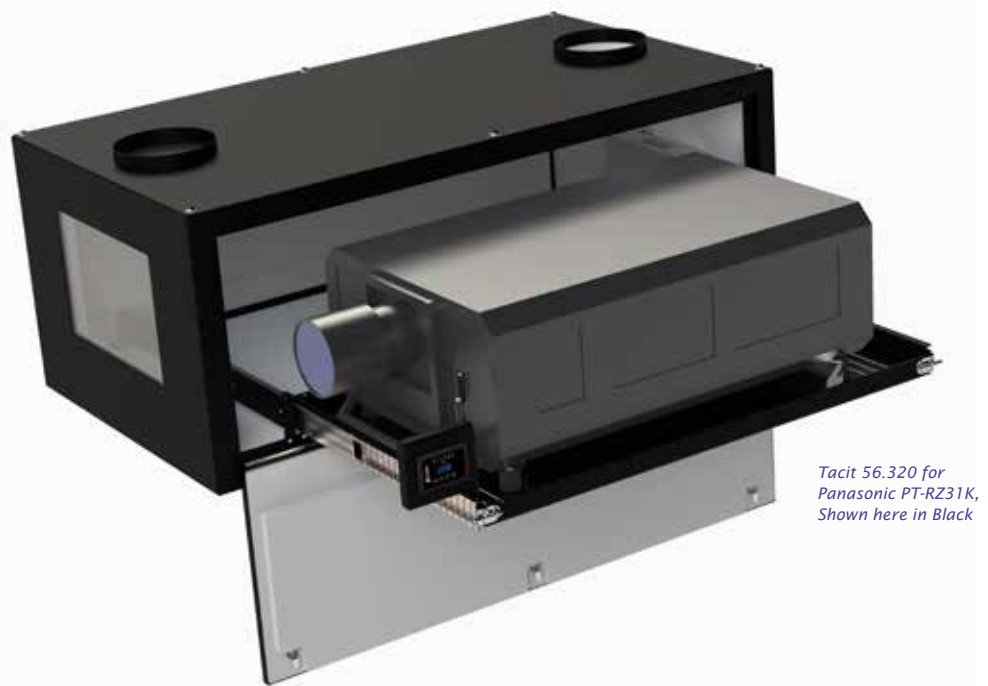
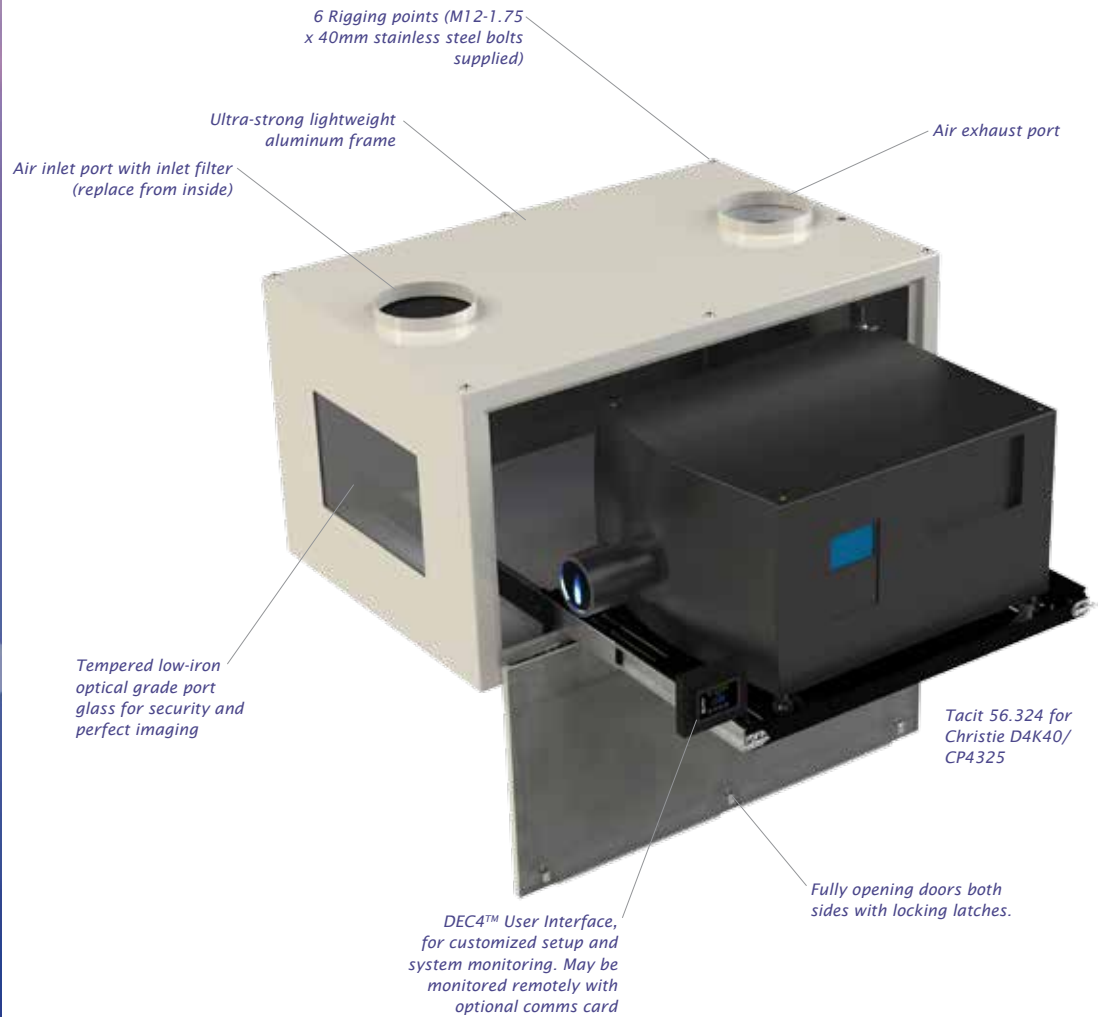
*Now Tempest Tacit enclosures monitor air temperature where it matters — right next to the projector air inlet. You can set a target air inlet temperature limit, and Tacit's variable speed remote fan will blow just hard enough to keep it there.*

*You told us that our user interface was great, but that it could be distracting or hard to reach on the outside. So now it's right where you need it, next to the projector.*



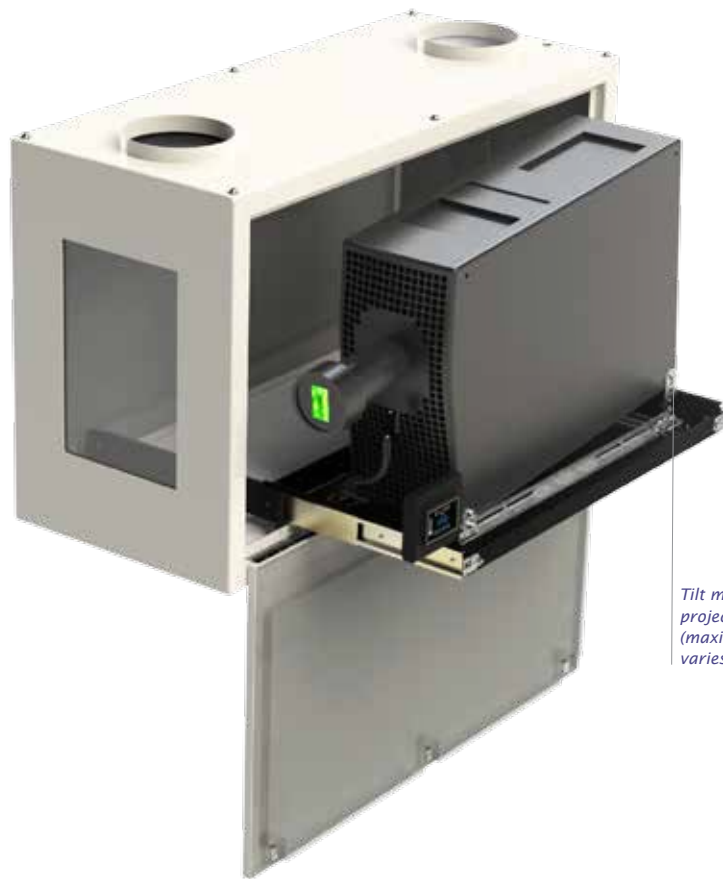
# Tacit Hush Projector Enclosures

## Landscape



# Tacit

Hush  
Projector  
Enclosures



## Portrait

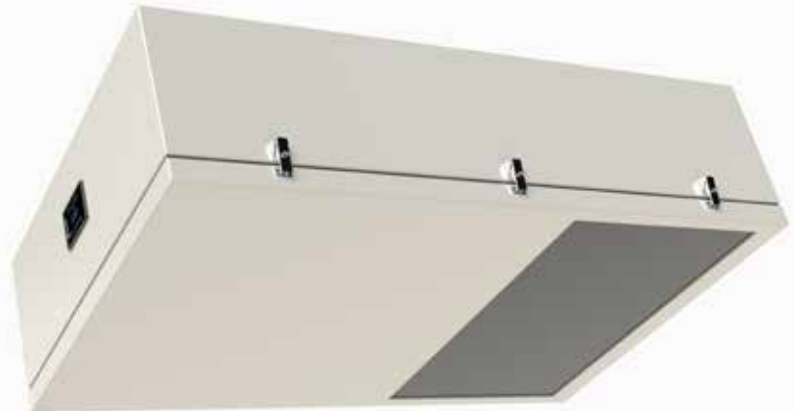
Like all Tacit models, each Tacit portrait enclosure is customized for the intended projector, so we need to know the projector you're using when you order.

Not all projectors may be used in portrait mode — check with your projector manufacturer before ordering.

Some projectors may be used in portrait mode but only in one orientation — either base left or base right (picture here shows a Christie Crimson installed base left).

*Tilt mechanism allows projector tilt adjustment (maximum tilt angle varies by projector).*

## Ultra Short Throw



Tacit UST enclosures allow you to paint the whole wall from just above or below. UST enclosures are wider than standard landscape enclosures, to allow for the extreme width of the projection beam without clipping.

Tacit UST enclosures may be configured to mount above the image (projecting down) or below it (projecting up). Due to the wide variety of UST lens solutions on the market, Tacit UST enclosures are specially

built for your project: Contact Tempest and talk to us about your next UST adventure!

# Tacit Hush Projector Enclosures



## Tacit Remote Blower Kit

51.RFA.270 (included)

This powerful blower must be located in an adjoining space to the Tacit enclosure, out of audience earshot. Connection to the enclosure is via one 2-conductor power cable (48Vdc, 120W), and one twisted pair for speed control and status feedback - a CAT5 cable is fine. The cable may be pulled back to the enclosure through the exhaust duct if desired.

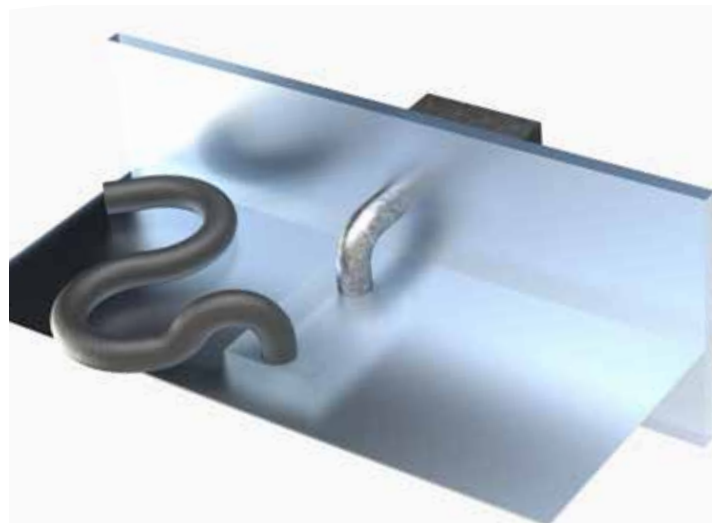
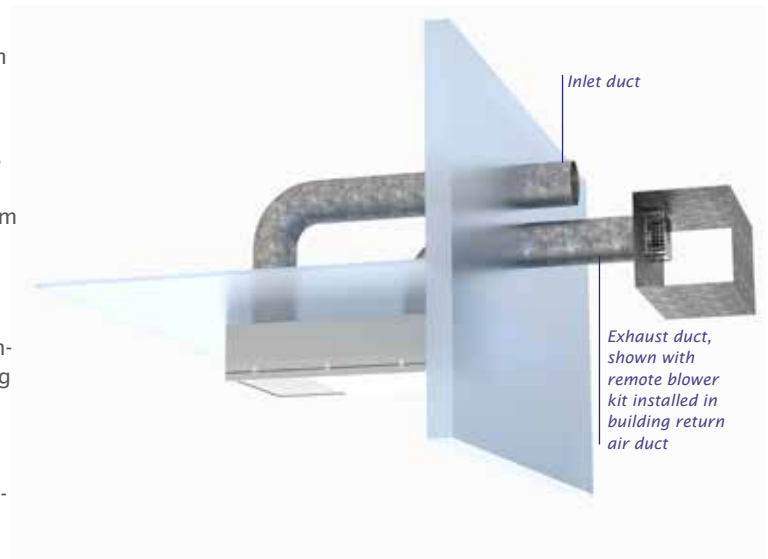
Mount the blower kit either in a convenient space in free air, or in the side of a building return HVAC duct.

## Ductwork (by others)

For best results, install 250mm (10") air ducts for air inlet and exhaust.

The exhaust duct should be as short as possible (maximum 10m/30ft), and with a minimum of sharp bends, to optimize airflow.

The inlet duct should ideally connect to an adjoining air-conditioned space, for best cooling and acoustic performance. DO NOT pull air from the building HVAC supply if it may be used for heating as well as air conditioning.



## Rigging Points

Each Tacit enclosure is supplied with six 12mm threaded holes in the top surface, for suspension of the enclosure using either M12-1.75 threaded rod or bolts (supplied).

Tacit enclosures may be supplied with Unistrut rails fitted to speed up installation.

**Important:** most Tacit enclosures are hung above an audience; for the sake of appearance, there are no rigging points on the underside. For installations where such rigging points are required, please specify with your order on the configuration sheet at the back of this brochure.

If it is impractical to bring inlet air from a remote location, use a length of padded flexible hose (250mm/10in ID) in an 'S' configuration to draw in air and muffle any noise escaping through the air inlet path.

In cases where additional ductwork is not feasible such as in historic buildings, consider Tempest's *Zen* standalone enclosures.

# Tacit Hush Projector Enclosures

## Fan Speed Control

Your Tacit enclosure uses a powerful variable-speed blower in a remote location to keep the projector at optimum operating temperature.

The remote blower will run at the minimum speed required to maintain the target projector inlet temperature, keeping fan noise to a minimum and enabling virtually infinite fan life.

Tacit's temperature sensor is now located exactly where you need it - right by the projector's inlet vent, and user settings allow you to set a target inlet temperature to suit the needs of your particular projector.

## Individual Fan Monitoring

G4 Tacit enclosures can also tell you how each fan in a whole installation is performing. DEC4 compares calculated and actual fan speed, and is able to alert

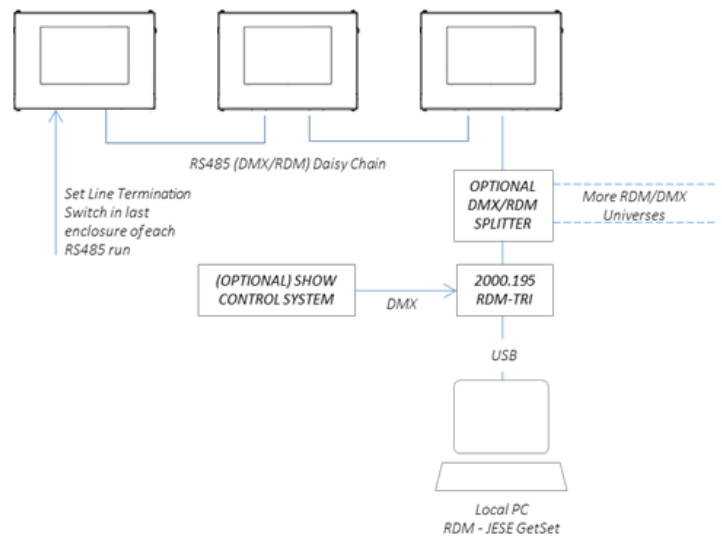
you if one of the fans in a system needs attention.

Combined with JESE Agent remote monitoring service this means you could be receiving an email telling you it's time to check the fan on enclosure two!

## System Monitoring

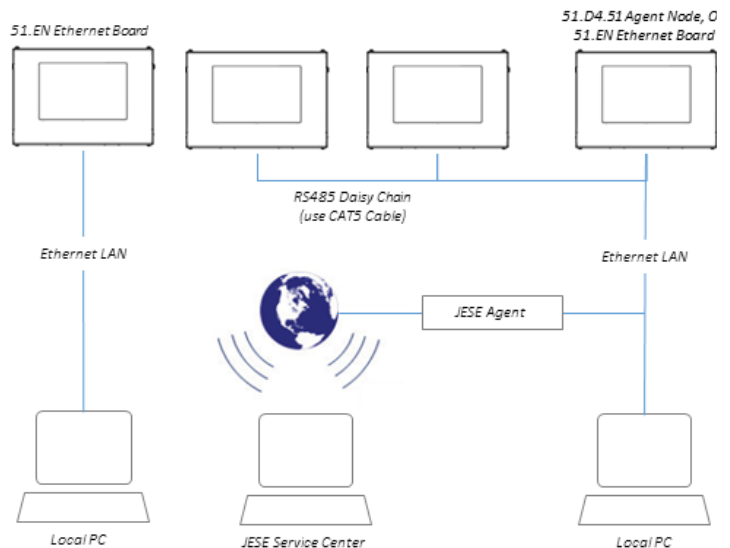
### RS485 Comms (standard)

Daisy-chain a group of Cyclone enclosures together with this RS485 board — one per enclosure, and monitor using a JESE RDM-TXI interface (Tempest part # 2000.195).



### 51.EN Ethernet Comms

Use this Ethernet adapter to connect one Cyclone or a group of Cyclones connected using RS485 to a PC, and monitor using Tempest TEMP protocol. Download the TEMP Developer Guide from [www.tempest.biz/tech-support](http://www.tempest.biz/tech-support).



### JESE Agent - Global Monitoring

Now, there's Agent, from Tempest partner JESE — monitor larger systems in the site control room, or worldwide, from our UK-based control center — see more below...

# Tacit Hush Projector Enclosures

With JESE's groundbreaking AGENT monitoring system, you can see exactly what's going on, in every one of those mission-critical enclosures.

And so can we...

We can log into your AGENT system from JESE's UK support center, and help you identify and fix problems — even upload new firmware to your enclosures if that's what you need.

### Low Risk — High Reward

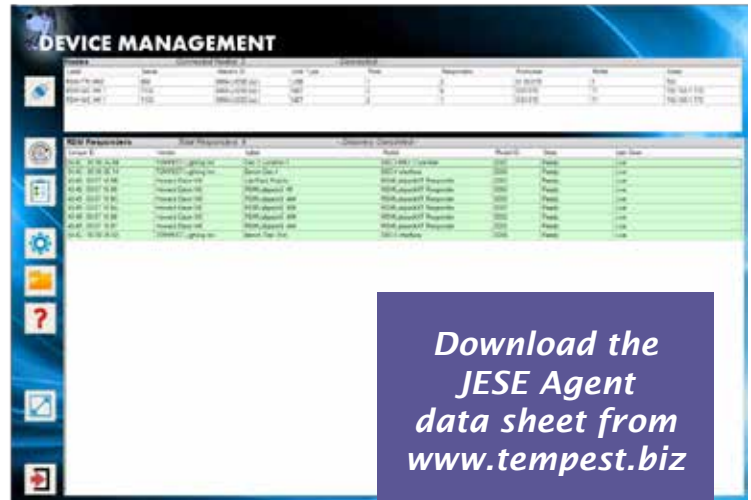
For a very modest initial outlay, and an annual service fee, you can rest assured that your system will alert you to any potential or actual problems, and you will have access to system upgrades and real-time support, from experts who can see right into your system.

Low risk, very high reward.

## JESE Agent—Global Monitoring

And there's more...

AGENT supports the published ANSI DMX and RDM standards, so it can be used to monitor any compliant products, seamlessly with your Tempest enclosures.



Download the  
JESE Agent  
data sheet from  
[www.tempest.biz](http://www.tempest.biz)



Remote Access  
over Internet

Windows PC  
running JESE  
Agent Client



# Tacit Ordering Guide

| Model           | Orientation | Dimensions | (lwh)        | Weight      | Projector Type <sup>1</sup>   | Shipping Dimensions/Weight           |
|-----------------|-------------|------------|--------------|-------------|---|--------------------------------------|
| <b>56.150.L</b> | Landscape   | 42x32x20   | 107x81x51cm  | 132lb/60kg  | Barco F80, F90, Christie H/HS Series, DPI M-Vision 930, Epson L-1700, Panasonic PT-RS11, RZ12, RQ13 | 51x42x33in/130x107x84cm 222lb/101kg  |
| <b>56.150.P</b> | Portrait    | 42x22x30   | 107x56x76cm  | 136lb/62kg  |   | 51x32x43in/130x81x109cm 226lb/103kg  |
| <b>56.210.L</b> | Landscape   | 51x35x24in | 130x89x61cm  | 211lb/96kg  | Panasonic PT-DZ21K, PT-RZ12K, PT-RQ13, PT-RZ21K, Barco F90-W13, DPI Highlite 4K                     | 60x45x37in/152x114x94cm 331lb/150kg  |
| <b>56.210.P</b> | Portrait    | 51x25x36in | 130x64x91cm  | 226lb/103kg |   | 60x35x49in/152x89x124cm 346lb/157kg  |
| <b>56.250.L</b> | Landscape   | 51x37x24in | 130x94x61cm  | 223lb/101kg | Epson Pro L25000U   | 60x47x37in/152x119x94cm 363lb/165kg  |
| <b>56.250.P</b> | Portrait    | 51x25x41in | 139x64x104cm | 257lb/117kg |   | 60x35x54in/152x89x137cm 397lb/181kg  |
| <b>56.305.L</b> | Landscape   | 51x35x26in | 130x89x66cm  | 228lb/104kg | Panasonic PT-RQ35K, PT-RZ34K, Epson L20000  | 60x45x39in/152x114x99cm 368lb/167kg  |
| <b>56.305.P</b> | Portrait    | 51x25x36in | 130x64x91cm  | 226lb/103kg |   | 60x35x49in/152x89x124cm 366lb/166kg  |
| <b>56.310.L</b> | Landscape   | 59x35x25in | 150x86x64cm  | 254lb/115kg | Christie Boxer, Crimson, Barco UDX  | 68x45x38in/173x114x97cm 394lb/179kg  |
| <b>56.310.P</b> | Portrait    | 59x25x36in | 150x64x91cm  | 261lb/119kg |   | 68x35x49in/173x89x124cm 401lb/182kg  |
| <b>56.320.L</b> | Landscape   | 67x37x25in | 170x94x65cm  | 305lb/139kg | Panasonic PT-RZ31K, RQ32K,  | 76x47x38in/193x119x97cm 455lb/207kg  |
| <b>56.320.P</b> | Portrait    | 67x28x38in | 170x71x97cm  | 313lb/142kg |   | 76x38x51in/193x89x130cm 463lb/210kg  |
| <b>56.324.L</b> | Landscape   | 58x37x34in | 147x94x86cm  | 359lb/163kg | Christie CP4325, D4K40-RGB  | 67x47x47in/170x119x119cm 529lb/240kg |
| <b>56.324.P</b> | Portrait    | 58x31x41in | 147x79x104cm | 363lb/165kg |   | 67x41x54in/170x104x107cm 533lb/242kg |
| <b>56.400.L</b> | Landscape   | 62x37x38in | 157x94x97cm  | 440lb/200kg | Barco B-Series  | 71x48x51in/180x122x130cm 610lb/277kg |
| <b>56.450.L</b> | Landscape   | 71x37x38in | 180x94x97cm  | 504lb/229kg | Christie D4K35, CP2220/30   | 80x48x51in/203x122x130cm 674lb/307kg |
| <b>56.525.L</b> | Landscape   | 67x37x29in | 170x97x74cm  | 354lb/161kg | Panasonic PT-DZ50K, PT-RQ50K, DPI Insight Dual  | 76x47x42in/193x119x107cm 534lb/243kg |
| <b>56.525.P</b> | Portrait    | 67x29x38in | 170x74x97cm  | 363lb/165kg |   | 76x39x51in/193x99x130cm 543lb/247kg  |

<sup>1</sup> For projectors not shown here, please contact factory — we will be happy to accommodate any projector type

All Tacit Enclosures are built to order. Please consult factory for lead times.

All Tacit UST Enclosures are Custom or Semi-Custom. Please consult factory for details.

All sales are subject to Tempest Lighting, Inc. Standard Terms and Conditions, available for download at [www.tempest.biz](http://www.tempest.biz).

All Schedule B Export Code: 9405.99.0000

## Custom Colors

The enclosures in this brochure are shown in our standard warm white semi-gloss or black. Any RAL color available to special order.

## Options

|                  |  |
|------------------|--|
| <b>56.UR.xxx</b> | Unistrut Rail Kit (Use the 3-digit enclosure model #, eg 56.UR.200 for Tacit 56.200) |
| <b>51.IFL.11</b> | Replacement Inlet Filter Tacit 56.1xx-3xx Models                                     |
| <b>51.IFL.13</b> | Replacement Inlet Filter Tacit 56.400 and up   |
| <b>51.EN</b>     | Ethernet Board, for Tempest TEMP monitoring  |
| <b>51.D4.51</b>  | JESE Agent 1-port node board   |
| <b>51.JA.xxx</b> | JESE Agent Monitoring System - <i>consult factory</i>                                |
| <b>0000.CL</b>   | Custom Color — specify any RAL #, plus % gloss desired                               |




# Tacit Configurator

Please complete this form and email to us at [info@tempest.biz](mailto:info@tempest.biz)

|                     |   |
|---------------------|---|
| Name                |   |
| Company             |   |
| Email               |   |
| Phone               |   |
| Projector type      |   |
| Tacit Model         | 56. _____   |
| Quantity            |   |
| Destination Country |   |
| Install Date        |   |
| Enclosure Type      | Landscape <input type="checkbox"/> Portrait <input type="checkbox"/><br>Ultra Short Throw <input type="checkbox"/>  |
| Projector Slide     | Left (as shown here) <input type="checkbox"/> Right <input type="checkbox"/><br>Front (custom) <input type="checkbox"/> Back (custom) <input type="checkbox"/>  |
| Projector Mount     | Landscape/UST: Feet Down <input type="checkbox"/> Feet Up <input type="checkbox"/><br>Portrait: Feet Left <input type="checkbox"/> Feet Right <input type="checkbox"/>  |
| Unistrut Kit        | Yes, Qty _____ No <input type="checkbox"/>  |
| Ethernet Bridge     | Yes, Qty _____ No <input type="checkbox"/>  |
| Spare Inlet Filter  | Yes, Qty _____ No <input type="checkbox"/>  |
| Color               | Standard, Warm White <input type="checkbox"/><br>Standard, Black <input type="checkbox"/><br>Custom, RAL # _____<br><br>Gloss Level * _____%<br><i>* Gloss levels higher than 30% may show up weld marks. Tempest advises against high gloss finishes and accepts no liability in this event.</i> |

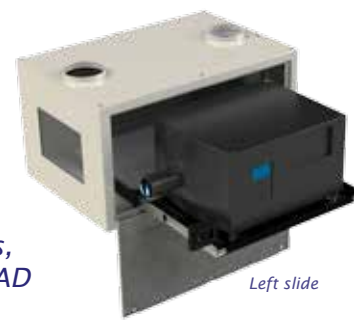
Projector Power Outlet (all types include 2 x IEC 60320 C13 Aux Power):  
 IEC 60320 C19 20Amp \_\_\_\_\_   
 IEC 60309 30/32Amp \_\_\_\_\_   
 Custom (specify) \_\_\_\_\_

UST Lens Configuration:

|  |   |   |
|--|---|---|
|  |  |  |
| 90deg Up <input type="checkbox"/>  | 90deg Down <input type="checkbox"/>   | Periscopic A <input type="checkbox"/>   |
|  |  |  |
| 90deg Right <input type="checkbox"/>   | 90deg Left <input type="checkbox"/>   | Periscopic B <input type="checkbox"/>   |
|  |  |  |

Custom Requests:

|                   |  |
|-------------------|--|
| Factory Use Only: |  |
| SO Number         |  |
| Date              |  |



User manuals,  
2D and 3D CAD  
drawings at  
[www.tempest.biz](http://www.tempest.biz)