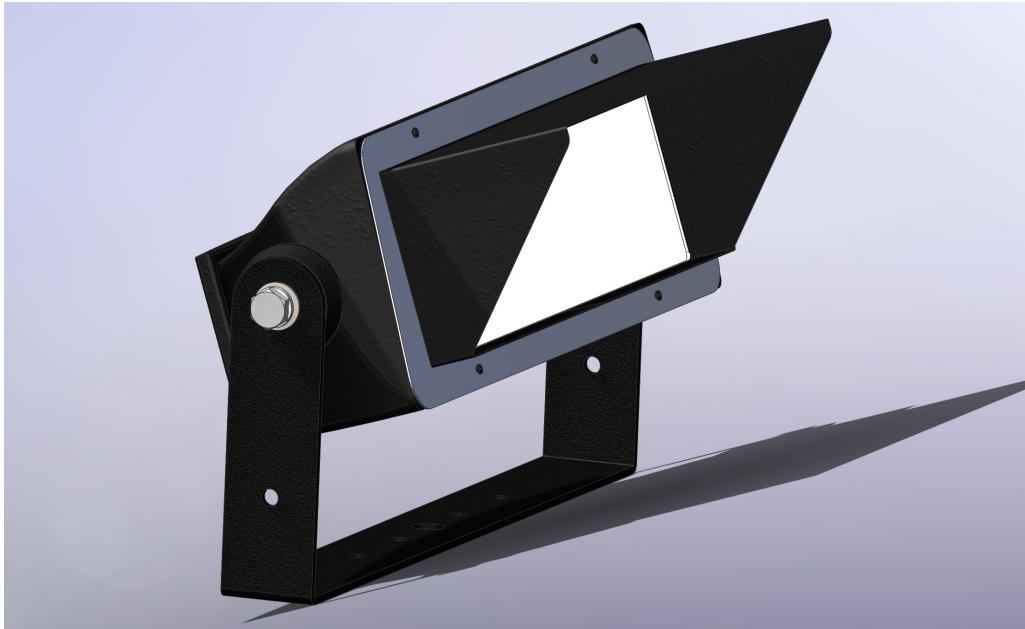


Compact Reach Glare Shields



Glare? What glare? Now you can put the light where you want it, with these unobtrusive, one-piece glare Shields. These accessories screw onto the face of the Philips Color Kinetics Compact Reach fixture, with or without a lens bezel.

4716.GA
Compact Reach Angled Glare Shield

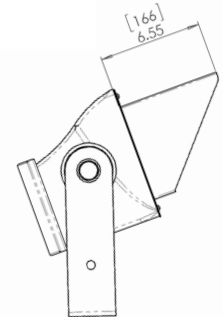
For Use with:

- Philips Color Kinetics Color Reach Compact Powercore
- Philips Color Kinetics iW Reach Compact Powercore
- Philips Color Kinetics eColor Reach Compact Powercore
- Philips Color Kinetics eW Reach Compact Powercore

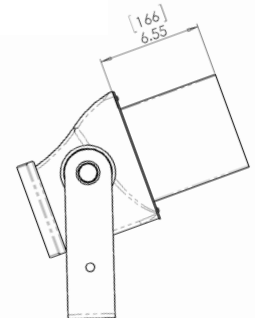
Glare shields are no longer a luxury - required now in a growing number of jurisdictions for all outdoor luminaires, and of course always desirable to reduce or eliminate glare.

Tempest's Glare Shields are available symmetrical or angled, and finished with a flat black epoxy powder coat. Custom colors are available to special order.

The Glare Shields attach to the front of the fixture with screws provided. Longer screws are also included for use when a Philips Color Kinetics spread lens and bezel are to be used.



4716.GS
Compact Reach Glare Shield



Part Number	Description	✓
4716.GS	Compact Reach Glare Shield	
4716.GA	Compact Reach Angled Glare Shield	

Job Name	
Location	
Architect	
Designer	

In the interest of continuous product improvement, specifications are subject to change without notice