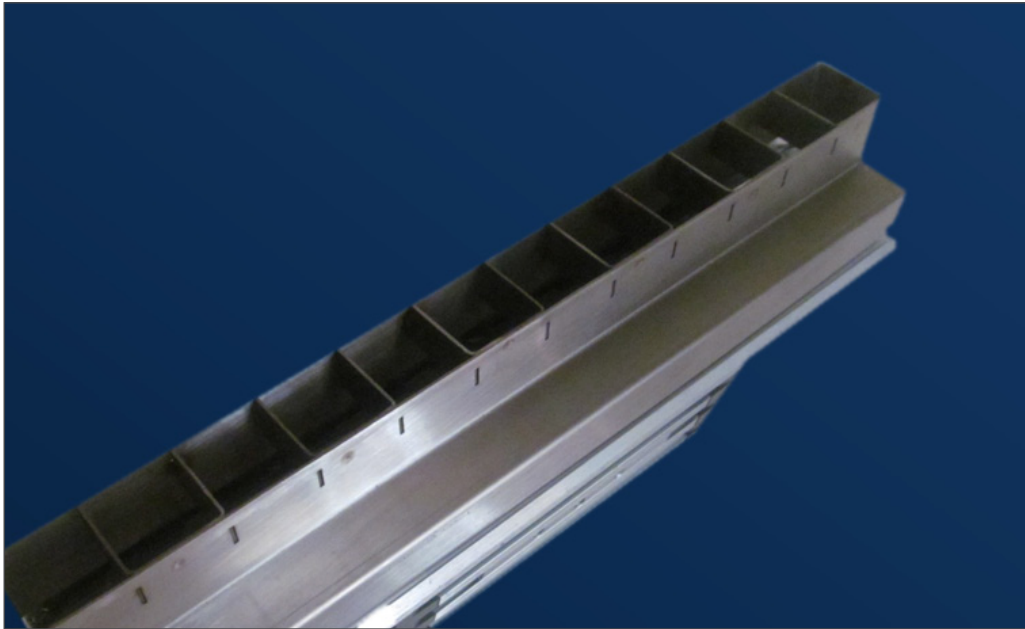


Graze Louvers



These louvers slide securely into Graze's top extrusion. Two versions are now available, painted steel or stainless for corrosive industrial or beach environments.

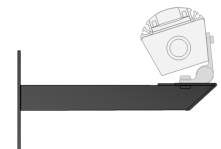
For Use with:

Philips Color Kinetics Color Graze Powercore
 Philips Color Kinetics eW Graze Powercore

Tempest Graze louvers are the same length as their respective fixtures, allowing contiguous runs to be installed without gaps.

Don't forget to specify Tempest Graze Wall mounting arms for your wall grazing project! Standard offsets at 4", 8", 12", 24", with custom lengths and double-mount arms available to special order.

Part Number	Description	✓
4782.12	Graze Louver, 12", Black	
4782.24	Graze Louver, 24", Black	
4782.36	Graze Louver, 36", Black	
4782.48	Graze Louver, 48", Black	
4782.12SS	Graze Louver, 12", Stainless Steel	
4782.24SS	Graze Louver, 24", Stainless Steel	
4782.36SS	Graze Louver, 36", Stainless Steel	
4782.48SS	Graze Louver, 48", Stainless Steel	



Job Name	
Location	
Architect	
Designer	