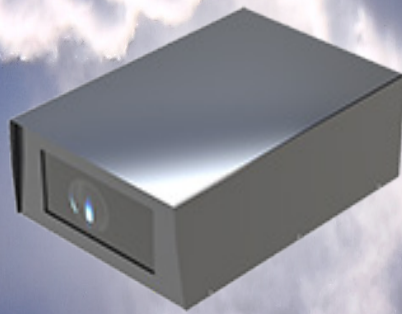




TEMPEST

Breeze

Outdoor
Projector
Enclosures
3-15K



Breeze Outdoor Projector Enclosures

Tempest, undisputed world leader in projector enclosure technology, introduces Breeze, a family of outdoor enclosures for most projector types between 3,000 and 14,000 ANSI Lumens.

You asked us for a simple solution, to bring outdoor operation within the budget of more of your projects, but without sacrificing Tempest build quality — and Breeze is our answer!

- Four models cover most projectors in landscape orientation, between 3,000 and 14,000 ANSI lumens
- Optical grade tempered port glass
- Universal projector mount grips projector firmly with pan, tilt and roll adjustment
- Universal IEC C13 projector power outlet, including rewirable plug (no-one ever has one!)
- Forced-air ventilation runs when the projector lamp is on, or when the temperature inside the enclosure exceeds 35°C
- Operation is completely automatic
- Electrostatic dust filter can be removed and washed when needed



Breeze 58.150, for most projectors 12-15,000 ANSI lumens.

- Thermal barrier inside cover for daytime protection under hot sun
- Simple rigging via 4 M8 screws
- Hanging Adapter Kit included
- Single or split feed wiring
- Attractive architectural bronze powder coat finish

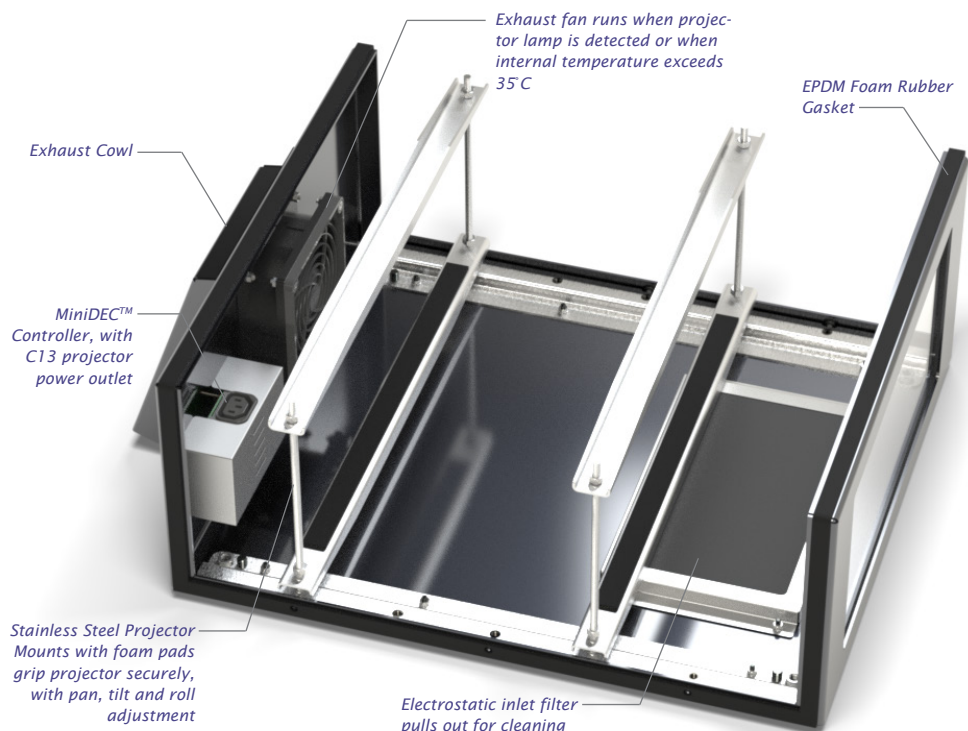
Breeze models come in 100-125V and 200-250V versions for North American/Japanese and International markets respectively.

Operating Temperature Range

Breeze may be used safely in locations where minimum temperatures do not fall below 0°C [32°F].

Maximum ambient temperatures when the projector is running (usually after dark) should not be higher than 2-3°C below the projector's stated maximum environmental limit. So, for a projector with a 45°C limit, ambients up to around 42°C are ok. During daytime the enclosure fan will run automatically if the internal temperature exceeds 35°C.

Breeze — the Inside Story



Breeze Outdoor Projector Enclosures

Installation

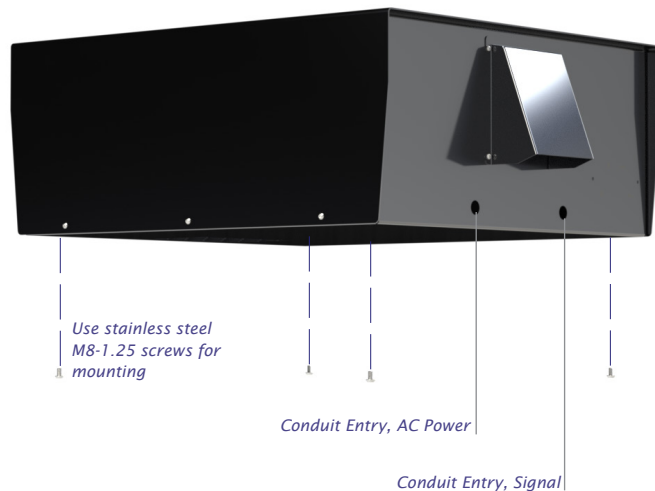
Standard Installation

Simply bolt your Breeze enclosure atop any suitable structure or frame, using the four M8-1.25 threaded holes in the enclosure base.

Wiring Access

Use outdoor-rated flexible conduit or flex cable and outdoor-rated cable glands to connect power and signal cables to the back of the enclosure.

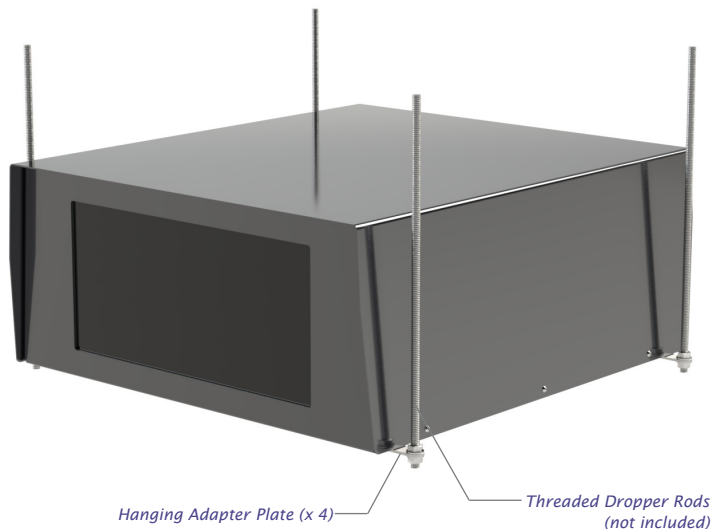
Conduit holes are 22mm [0.875in].



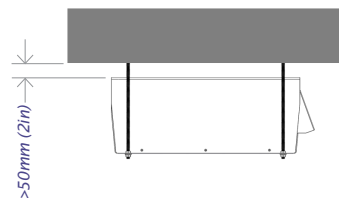
Hanging Installation

Use the four hanging adapter plates provided with threaded dropper rods (up to M12/1/2"), to hang Breeze from any suitable frame or structure.

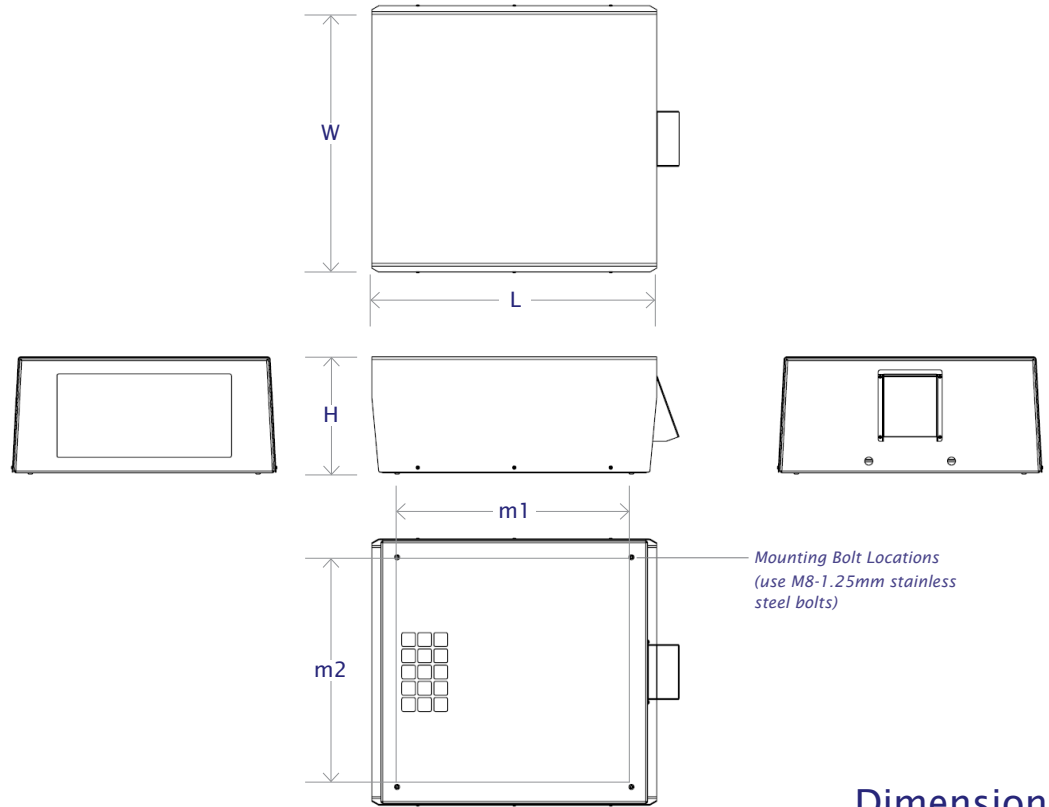
Be sure to leave some clearance above the enclosure (minimum 50mm/2in) to remove and replace the cover. Cover may be removed by removing fixing screws and sliding to the front or back.



When installed hanging, the cover is removed by lifting slightly and sliding to front (shown) or back. Allow at least 50mm (2in) between enclosure top and any overhang.



Breeze Outdoor Projector Enclosures



Dimensions

Model	Length	Width	Height	m1	Mounting Bolts	m2	Weight
58.025.xx	559 [22in]	478 [18.8in]	241 [9.5in]	445 [17.5in]	368 [14.5in]	16kg [35lb]	
58.050.xx	762 [30in]	648 [25.5in]	318 [12.5in]	648 [25.5in]	483 [19in]	21kg [45lb]	
58.100.xx	864 [34in]	702 [27.6in]	346 [13.6in]	749 [29.5in]	588 [23.16in]	30kg [66lb]	
58.150.xx	1,041 [41in]	702 [27.6in]	397 [15.6in]	927 [36.5in]	588 [23.16in]	41kg [90lb]	

Ordering Information

Model	International	Model	North America	Projector Maximum:			
				Length	Width	Height	Watts
58.025.IN	230V, 50/60Hz	58.025.US	120V/60Hz	410 [16in]	410 [16in]	150 [6in]	500
58.050.IN	230V, 50/60Hz	58.050.US	120V/60Hz	610 [24in]	572 [22.5in]	229 [9in]	800
58.100.IN	230V, 50/60Hz	58.100.US	120V/60Hz	711 [28in]	622 [24.5in]	254 [10in]	1,000
58.150.IN	230V, 50/60Hz	58.150.US	120V/60Hz	890 [35in]	622 [24.5in]	305 [12in]	1,600

All Schedule B Export Code: 9405.99.0000

Important:

Remember to include lens and cables/connectors when calculating projector size!

All sales are subject to Tempest Lighting, Inc. Standard Terms and Conditions, available for download at www.tempest.biz.

Replacement Filter Part Numbers

Model	Inlet Filter
58.025.xx	58.03.025
58.050.xx	58.03.050
58.100.xx	58.03.100
58.150.xx	58.03.150

Download CAD drawings
and user manuals at
www.tempest.biz



Made in the USA

©Tempest Lighting, Inc., July 2019

In the interest of continuous product improvement, specifications are subject to change without notice



Tempest Lighting, Inc.
11845 Wicks Street, Sun Valley, CA 91352, USA
www.tempest.biz info@tempest.biz
t: +1 818 787 8984 f: +1 818 252 7101