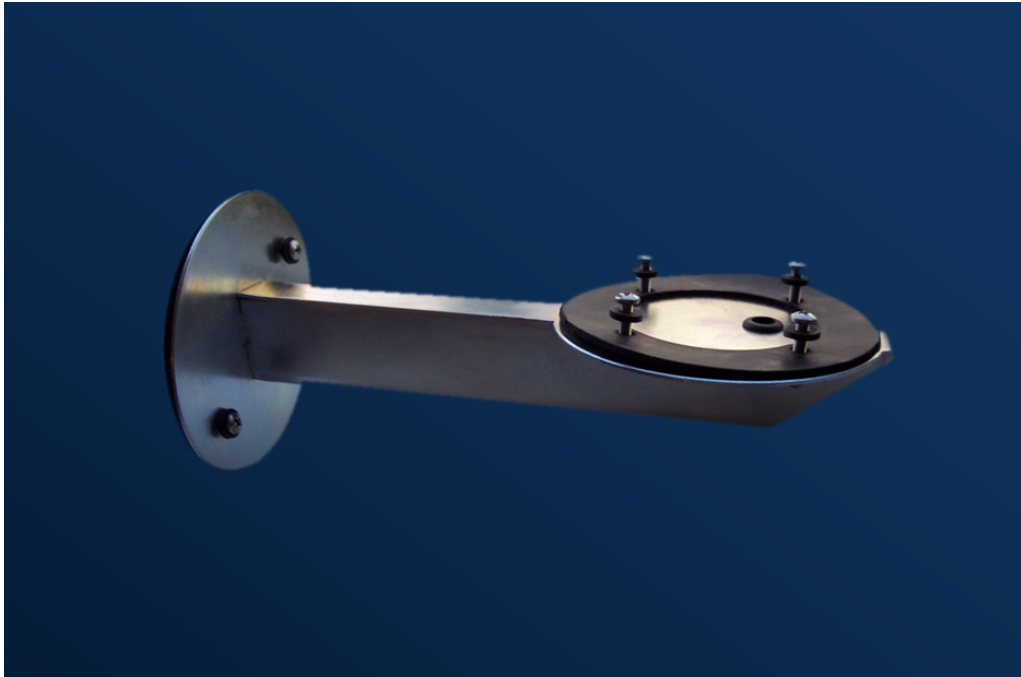


Blast/Burst Wall Mount



This line of sturdy mounting arms allows you to position a Blast or Burst fixture lighting up or down, and mounting to a regular round box or panel.

For Use with:

- Philips Color Kinetics Color Blast Powercore
- Philips Color Kinetics Burst Powercore*
- Philips Color Kinetics Compact Burst Powercore*

* Yoke versions only

Don't forget there is a wide range of holographic lenses and other accessories available from Tempest Lighting for all Blast Powercore fixtures.

These mounts are fabricated from heavy-gauge steel, plated and then epoxy powder-coated in a neutral mid-gray for extra-long corrosion-free life. Custom colors are available to special order.



While primarily intended to mount on US-style round boxes, these arms may be fixed directly to a panel or other architectural detail. In this instance the fixture pigtail will pull through the arm and must be appropriately terminated behind the panel.

Part Number	Description	✓
4751.06	6" Exterior Mounting Arm	
4751.12	12" Exterior Mounting Arm	
4751.18	18" Exterior Mounting Arm	
4751.24	24" Exterior Mounting Arm	

Job Name	
Location	
Architect	
Designer	

In the interest of continuous product improvement, specifications are subject to change without notice