



Typhoon.
Box Clever.

Typhoon – Installation or Rental

For years Tempest has been making the best projector enclosures on the market. Now there is Typhoon — protecting the new generation of high-power digital projectors for permanent mapping projects and events. Any weather, anywhere, and protection from salt air and oil fog.

Box Clever with Typhoon

Typhoon completes the picture for rental and staging applications as well as permanent installs for outdoor video mapping projects:

- Use in any orientation
- Install landscape or portrait as standard
- Tabletop and ceiling projector mounts as standard
- Hydrophobic HEPA filters protects from salt and oil
- Flexible power and signal connector options
- Many rigging and stacking options
- Black, Silver or custom color
- Tempest's patented DEC3.3 controller with *Goldilocks™* OS
- Remote monitoring over RDM or TCPIP

Typhoon is the culmination of years of experience designing and building the best projector enclosures in the world, in conjunction with the world's top projector manufacturers.

Typhoon is completely new. Equally at home in permanent video mapping installs or in busy rental shops, Typhoon will protect your valuable investment in any weather and from the dreaded oil fog on shows, tours and TV specials.

Any Angle

The new generation projectors can be installed in any orientation, for tabletop or ceiling lens shift. Typhoon too. Out of the box, you can use Typhoon at any angle, landscape and portrait orientation. Projector mounts are mirrored for use with up or down lens shift. Easy.

Any Install

We made it easy to rig Typhoon any way you want to use it. Or carry it. Grab handles, unistrut mounts, stacking kits and variable angle drop arms give you a palette of simple rigging

choices for every job. Stacking kits come with Clevis pins for fast and easy rig and derig.

Universal

Typhoon works out of the box in any country in the world, 200-265VAC, 50/60Hz.

Smarts

Typhoon comes with Tempest's patented Digital Enclosure Control (DEC3.3) system, with Goldilocks OS — keeping you warm when it's cold, cool when it's hot, and never allowing deadly condensation to form. And now you can monitor what's going on in your Typhoon enclosures over RDM (RS485) or TCPIP. Very cool.

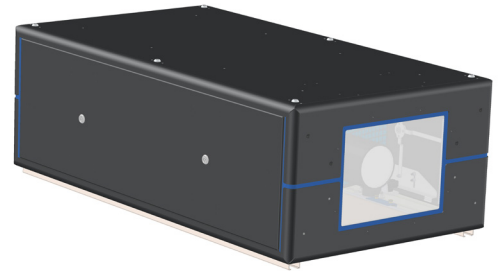
Projectors

Typhoon is available at Launch for Christie Boxer, Panasonic PT-DZ21K and DPI Titan Quad. For other projectors, contact Tempest.

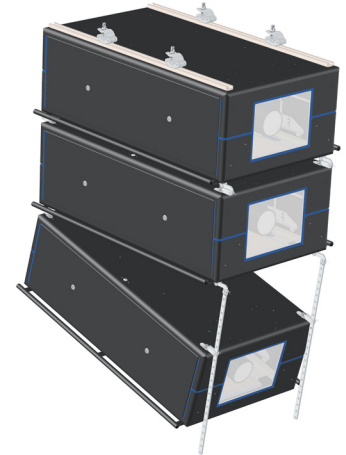
Let's talk about Typhoon

+1 818 787 8984

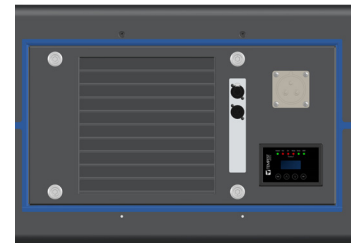
info@tempest.org.



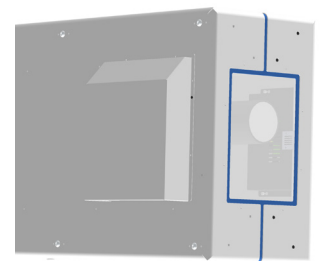
Basic Typhoon — elegant, compact, ready to go



Pick from a wide range of handy rigging kits



Choose from a selection of standard or custom power and signal connection options



Choose Black or silver powder coated exterior, or specify a custom RAL color. Did we mention you can use any Typhoon in portrait mode?

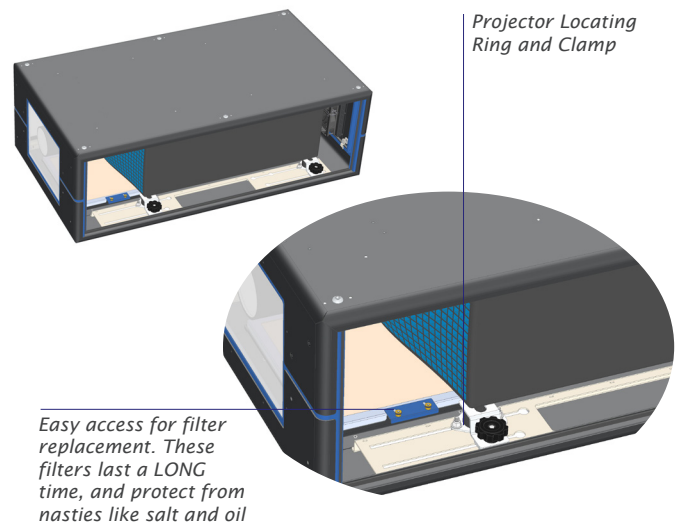
www.tempest.org

Projector Mounting

Simply slide the projector in from either side and locate its feet in the locating rings provided. You can move the rings forward/back, and also side to side. Lock them down and adjust tilt and roll on the projector feet. If you ever need to replace the projector, the new one will locate precisely in the locating rings.

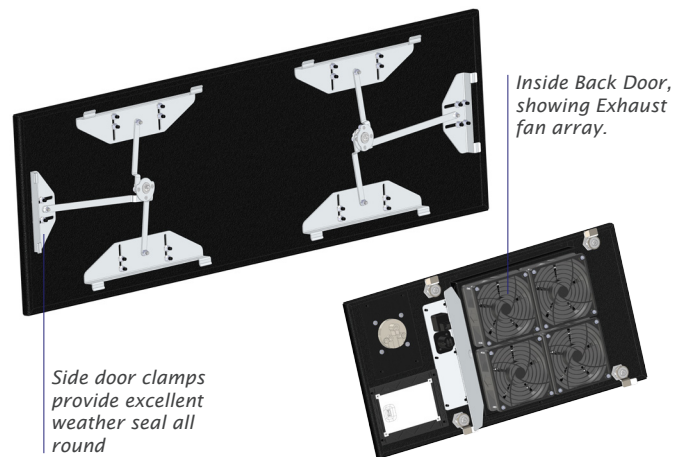
Then clamp the whole thing down, using our heavy-duty projector clamps on each foot.

The mounting system is mirrored on the inside of the top cover so you can easily hang the projector ceiling-style.



Projector Access

Side and rear doors are removable for projector installation and service. All doors clamp firmly into rubber gasket seals for weather protection, and are opened using an 8mm hex key that also provides security for outdoor installations.



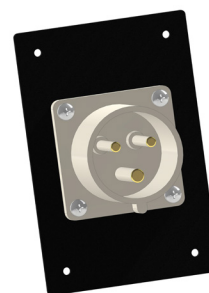
Power and Signal Connections

Power and signal connector modules give you plenty of options.

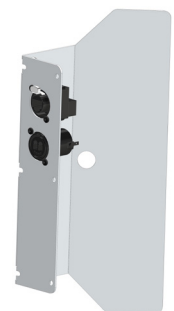
Specify conduit entry for most permanent installations.

For rental and staging, you can select your preferred power inlet connector, and specify the signal passthrough connectors that work with your standard cabling.

We provide two auxiliary power outlets (IEC320-C13) for any aux equipment you need to use. In North America you will need to run a neutral to use this feature at 120V.



Power inlet options include conduit, IEC309 32A (illustrated), NEMA L6-30, NEMA L14-30, and custom



This Signal passthrough module has an EtherCon and OpticalCon Duo, but you can specify whatever works for you

Typhoon Mounting Options

Basic Typhoon comes out of the box with six M12 threaded rigging points on the top and bottom faces. We supply a stainless steel socket cap screw and a rubber washer for each rigging point, to be used either to attach rigging options or to seal the opening.

Note: if using the optional Typhoon Inlet Cowl, you must make sure that rigging point attachments do not interfere.

If no cowl, then this area must be kept clear for air inlet.

Unistrut (8800.UR)

Specify a pair of stainless steel Unistrut rails to mount top or bottom for permanent install or easy attachment to truss clamps.

Truss Clamps (8800.TC)

Four Truss Clamps with Unistrut mounting hardware to attach to any truss with 2"/50mm rails.

Grab Handles (8800.GH)

A pair of Grab handles attach to the bottom rigging points and make it easy to handle the Typhoon enclosure in rental and staging applications.

Stacking Kit (8800.SK)

Four male/female stacking accessories with clevis pins for quick rig/derig.

Drop Arm Kit (8800.DA)

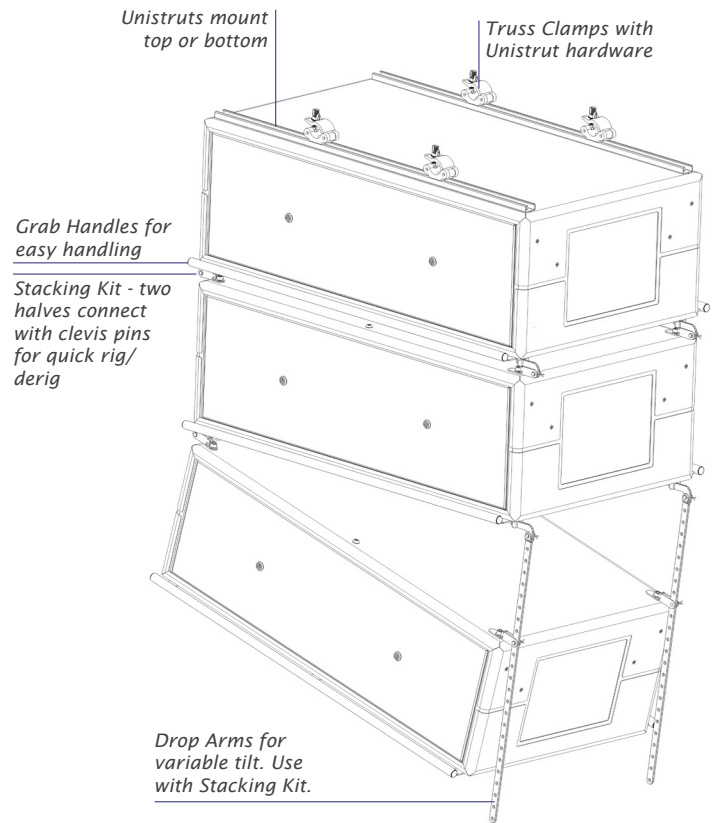
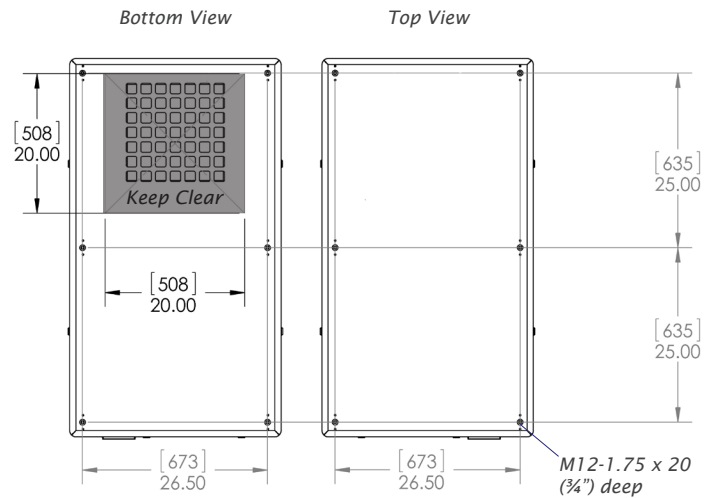
A pair of adjustable drop arms lets you tilt Typhoon up to 45° up or down (requires Stacking Kit).

Any of these rigging options may be used in combination with any other

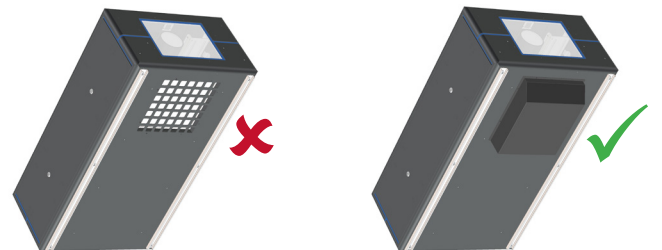
Inlet Cowl (8800.IC)

Most Typhoon systems will not require the inlet cowl option. But you need it if:

- you will use the Typhoon enclosure in portrait mode
- the enclosure will be angled up or down more than 30 degrees.
- You will be operating in a desert area with wind-blown sand.



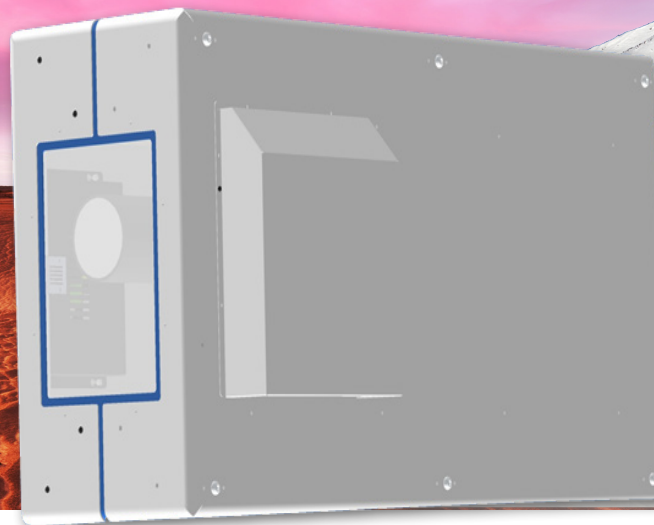
Did you know? You can use drop arms and stacking kits with Truss clamps for variable tilt right off a truss...



The inlet filter opening must be protected by an inlet cowl if the enclosure will be tilted up or down more than 30°



Tempest enclosures are installed in some very hot places — think Las Vegas, Dubai, Singapore...



...and some very cold ones - Russia, Canada, Finland.

DEC3.3™ with Goldilocks™

How do we keep projectors from roasting when it's 50°C and there's no shade?

And prevent condensation from destroying your projector overnight?

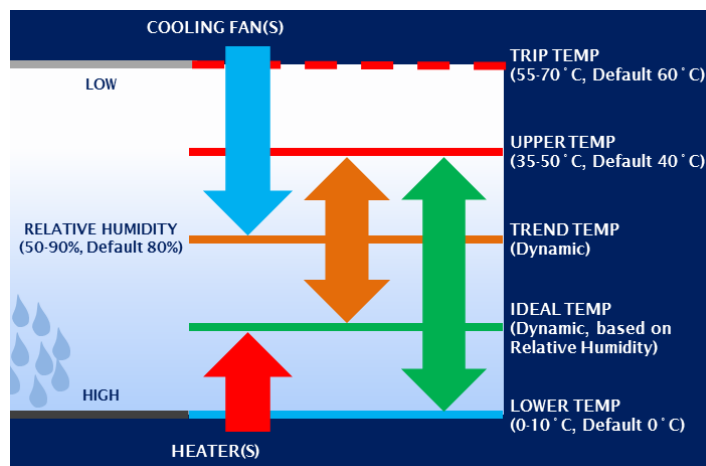
Tempest's new Goldilocks™ Operating System (patents pending) brings enclosure control to a new level:

Goldilocks keeps the air temperature inside your enclosure just right, removing heat from the projector when the lamp is on or when the enclosure is heated by the sun. We're changing the air about once every second.

Goldilocks uses heaters to maintain a minimum temperature in cold climates.

And Goldilocks tracks temperature and humidity 24/7, keeping relative humidity inside your enclosure just right by using heaters to raise the air temperature when needed, adapting constantly to prevent deadly condensation.

Goldilocks uses sensors, fans and heaters to maintain an optimum environment for your projector, and prevent deadly condensation from forming. Patents pending.



Remote Monitoring

Now you can monitor your enclosures over a simple RS485 link with our RDM interface and PC application.

Part #
2000.190



NEW!

Remote monitoring over TCPIP — contact us for information

Thermal Insulation Kit

Specify a thermal insulation kit to moderate internal temperatures in very hot or cold environments.

Part # 8800.TI

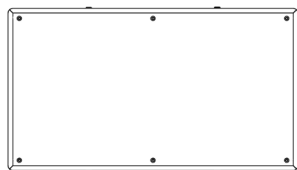
Typhoon

Build a System

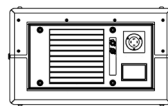
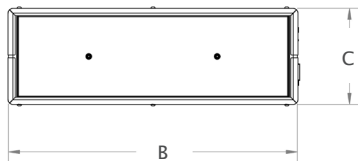
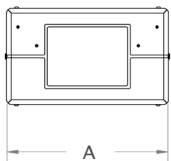
For a quotation, print this page, complete the form and scan it to
info@tempest.org

Part #	Description	Quantity
8800	Typhoon Enclosure for Christie Boxer
8810	Typhoon Enclosure for Panasonic PT-DZ21K/DS20
8820	Typhoon Enclosure for DPI Titan Quad
	Color: Black
	Color: Silver
	Color: Custom, RAL # [.....]
	Custom color Gloss [.....] or Matte [.....]
8800.UR	Pair Stainless Steel Unistrut Rails
8800.TC	Set of 4 Truss Clamps and Unistrut Hardware
8800.GH	Pair of Grab Handles
8800.SK	Stacking Kit
8800.DA	Pair of Drop Arms
8800.IC	Typhoon Inlet Cowl
8800.TI	Typhoon Thermal Insulation Option
8810.PL	Portrait Format Exhaust Louver for Typhoon 8810/20
8000.799.HF	Replacement Filter
Power Inlet	Conduit [. . .], L6-30 [. . .], L14-30 [. . .], IEC309-32[. . .], Other [.....]
Signal Inlet	Conduit [. . .], EtherCon [. . .], OpticalCon [. . .], BNC[. . .], Other [.....]
Custom – anything special?		

Dimensions



in [cm]	A	B	C	Weight
8800	30 [77]	54 [138]	18 [46]	150lb/68kg
8810	29 [75]	45 [115]	15 [39]	120lb/55kg
8820	29 [75]	45 [115]	15 [39]	120lb/55kg



Shipping

Palletized Carton, 54x42x26", weight 230lb, 137x107x66cm, 105kg
 Schedule B Export Code: 8536.30.0000

User Manual and CAD Drawings

For installation/operating instructions, download the
 Typhoon User Manual from www.tempest.org



Made in the USA

©Tempest Lighting, Inc., May 2015

In the interest of continuous product improvement, specifications are subject to change without notice

Tempest Lighting, Inc.,

11845 Wicks Street, Los Angeles, CA 91352, USA

www.tempest.org info@tempest.org

t: +1 818 787 8984 f: +1 818 982 5582

