

BlizzardCool™

Now, from Tempest, closed circuit active cooling for midsize, heat-sensitive laser-phosphor video projectors used outdoors.

BlizzardCool™ will keep your projector running within a narrow constant temperature range, in any climate.

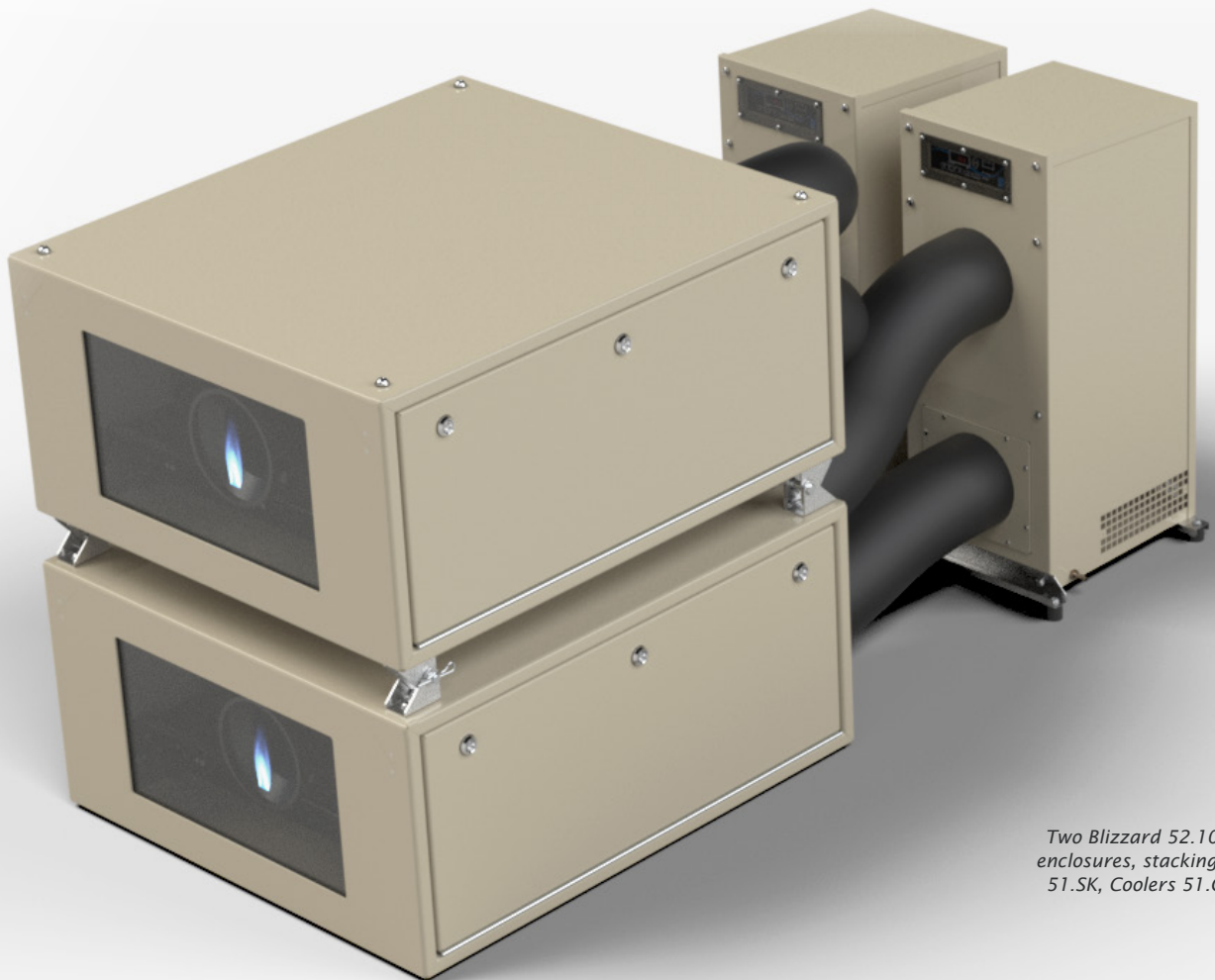
BlizzardCool operation is completely automatic — just set the target temperature and leave the rest to Tempest's patented DEC4 control system. As soon as DEC4 senses the projector is active, cooled air starts circulating through the enclosure, regulated by the cooler control.

Since BlizzardCool is a sealed, closed-loop system, the projector is protected to IP66 from outside pollutants, dust and wind-blown particulates.

The cooler internal parts are further protected with a ceramic coating to safeguard from pollutants such as salt air, sulfur and chlorine.

The cooler is isolated from the projector enclosure to prevent condenser vibration transmitting to the beam. This can be a critical factor in preventing image shake in long-throw applications.

BlizzardCool coolers come in three sizes, to match the thermal load of any projector.

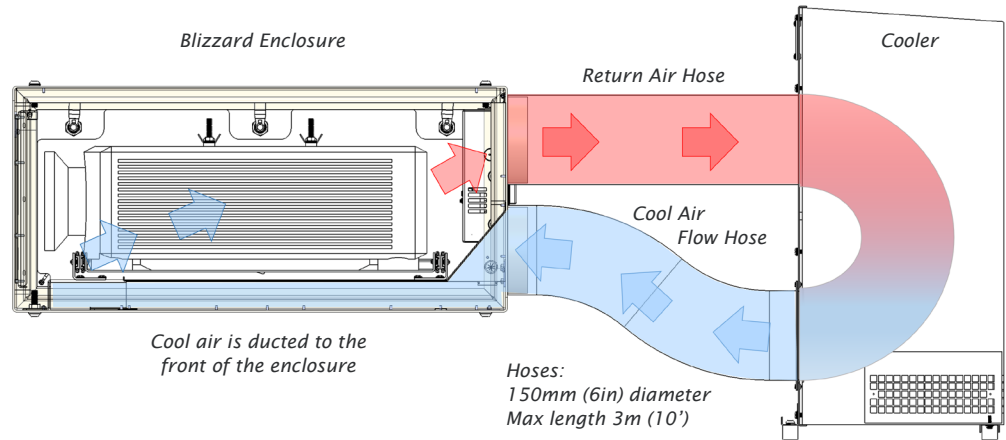


Two Blizzard 52.100.L enclosures, stacking kit 51.SK, Coolers 51.C6K

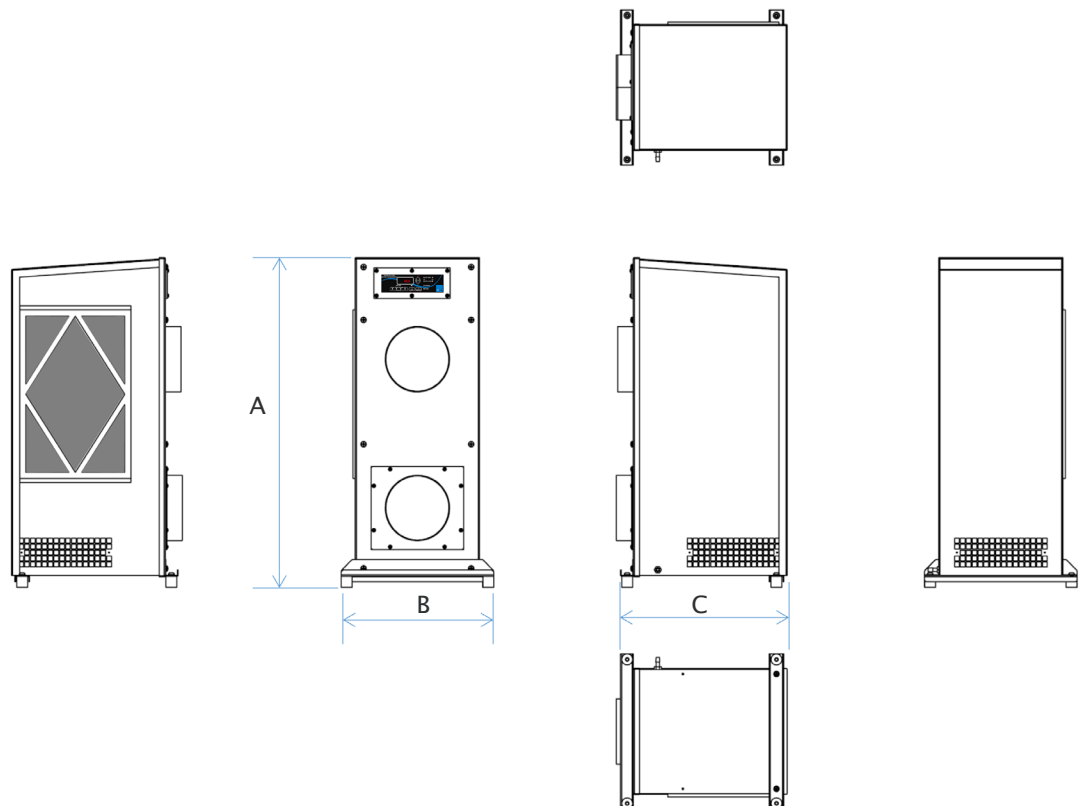
Standard Features

- UL Listed for Outdoor Use
- RoHS Compliant
- REACH Compliant
- Operating temperature from -40°C/-40°F to 55°C/131°F
- Low Ambient Protection prevents icing in ambients below 0°C/32°F
- CP3 Total Corrosive Nano E-Coating on all internal parts
- Vibration Reduction Longevity Technology
- Environment friendly and zero ozone-depleting HFC refrigerant
- Sloped top for rainwater run-off
- Centrifugal fans
- Maintains IP66 integrity of the enclosure
- Built-in condensate eliminator
- Programmable temperatures and alarm
- Efficient, quiet, and long-lasting rotary compressor
- Easy pull-out, cleanable, reusable electrostatic 10-micron filter to increase the longevity of the unit
- Telcordia GR-487 Testing (Salt Fog & Wind-Driven Rain)

Flow Diagram



Dimensions

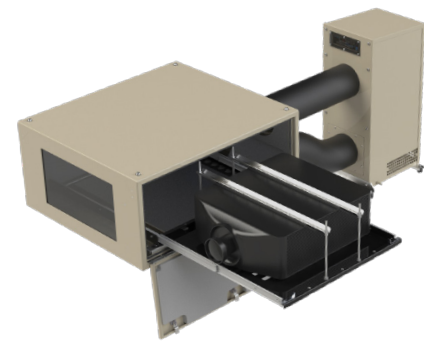
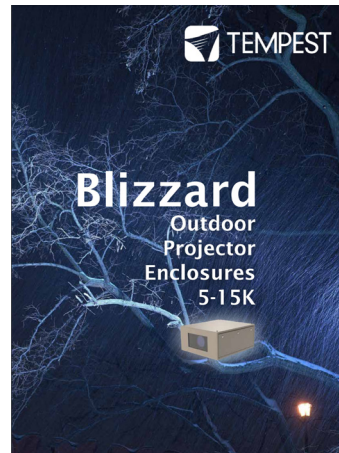


Model	Dim A	Dim B	Dim C	Weight	Power (120V)	Power (230V)
51.C4K	756 [29.8in]	355 [14in]	388 [13.9in]	43kg [94lb]	6A	3A
51.C6K	756 [29.8in]	355 [14in]	388 [13.9in]	43kg [94lb]	9A	5A
51.C8K	1010 [39.8]	355 [14in]	400 [15.7in]	65kg [142lb]	15A	8A

Ordering Guide

Model	For Blizzard:	Voltage	Frequency	Max Projector Power	Cooling Power
51.C4K.120	52.050.xx.xx 52.100.xx.xx 52.125.xx.xx	100-125VAC	60Hz	800W	4,000btu/hr
51.C4K.230	52.050.xx.xx 52.100.xx.xx 52.125.xx.xx	200-250VAC	50/60Hz	800W	4,000btu/hr
51.C6K.120	52.100.xx.xx 52.125.xx.xx	100-125VAC	60Hz	1,200W	6,000btu/hr
51.C6K.230	52.100.xx.xx 52.125.xx.xx	200-250VAC	50/60Hz	1,200W	6,000btu/hr
51.C8K.120	52.150.xx.xx	100-125VAC	60Hz	1,800W	8,000btu/hr
51.C8K.230	52.150.xx.xx	200-250VAC	50/60Hz	1,800W	8,000btu/hr

Outdoor Projector Enclosures



*Blizzard 52.100.LS.xx,
with 51.C6K.xxx Cooler*



 Made in the USA

©Tempest Lighting, Inc., September 2021

In the interest of continuous product improvement, specifications are subject to change without notice

Tempest Lighting, Inc

11845 Wicks Street, Sun Valley, CA 91352, USA

www.tempest.biz info@tempest.biz

t: +1 818 787 8984 f: +1 818 982 5510